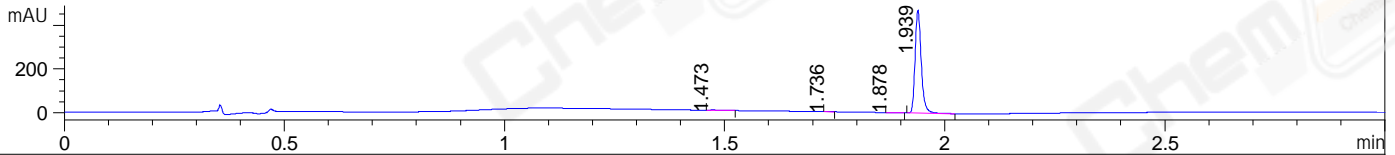
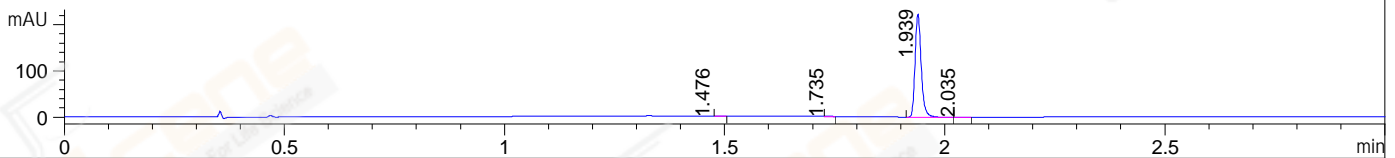


File ..115\20171115-2\024-P2-C4-LJ2017-1113-0038.D Tgt Mass (CHM):  
 Injection Date : 15 Nov 17 8:18 pm +0800 Seq. Line : 24  
 Sample Name : LJ2017-1113-0038 Location : P2-C-04  
 Acq. Operator : SYSTEM Inj : 1  
 Spec. Reported : MS Integration Inj Volume : 1 ul  
 Acq. Method : D:\LCMS03\Data\20171115\20171115-2\1-POS-3MIN.M  
 Analysis Method : D:\LCMS03\Data\20171115\20171115-2\1-POS-3MIN.M  
 CAS NO. : 71989-33-8  
 Method Info : Mobile Phase: A: water(0.01%TFA) B:ACN(0.01%TFA)  
 Gradient: 5% to 95%B within 1.3 min  
 Flow Rate :1.8ml/min  
 Column :SunFire C18, 4.6\*50mm,3.5um A-RP-186  
 Oven Temperature : 45C

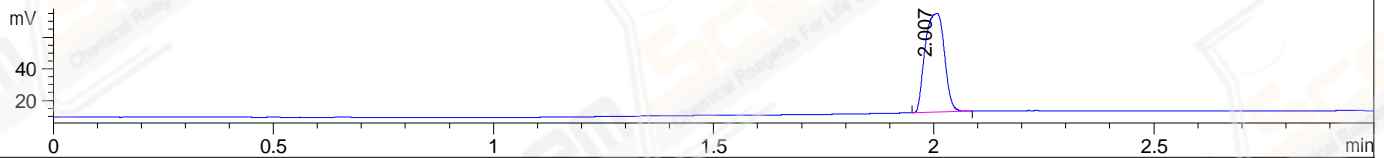
DAD1 A, Sig=214,4 Ref=off



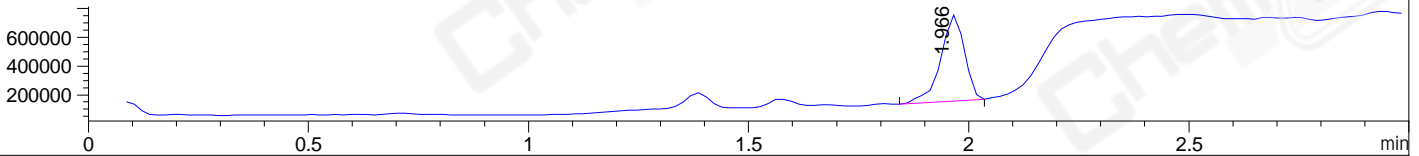
DAD1 B, Sig=254,4 Ref=off



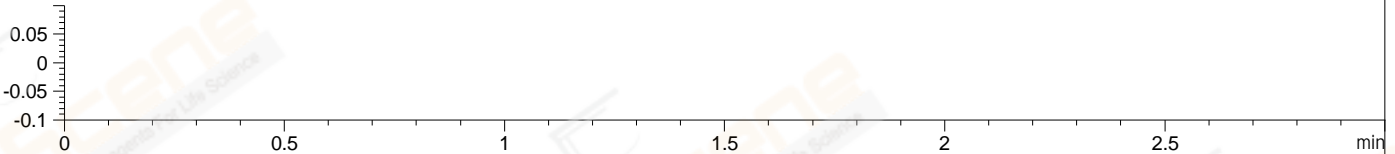
ELS1 A, ELSD Signal



MSD1 TIC, MS File ES-API, Pos, Scan, Frag: 70



Ion 1, MSD1 1, Target Mass 0 +H Positive, EIC=0.7:1.7



## Integration Results for DAD1 A, Sig=214,4 Ref=off

RetTim	Width	Area	Height	Area%	MS (+)
1.47	0.02	2.51	1.64	0.55	130
1.74	0.02	0.95	1.04	0.21	233
1.88	0.01	0.94	0.97	0.21	105
1.94	0.01	454.46	467.30	99.04	406

## Integration Results for DAD1 B, Sig=254,4 Ref=off

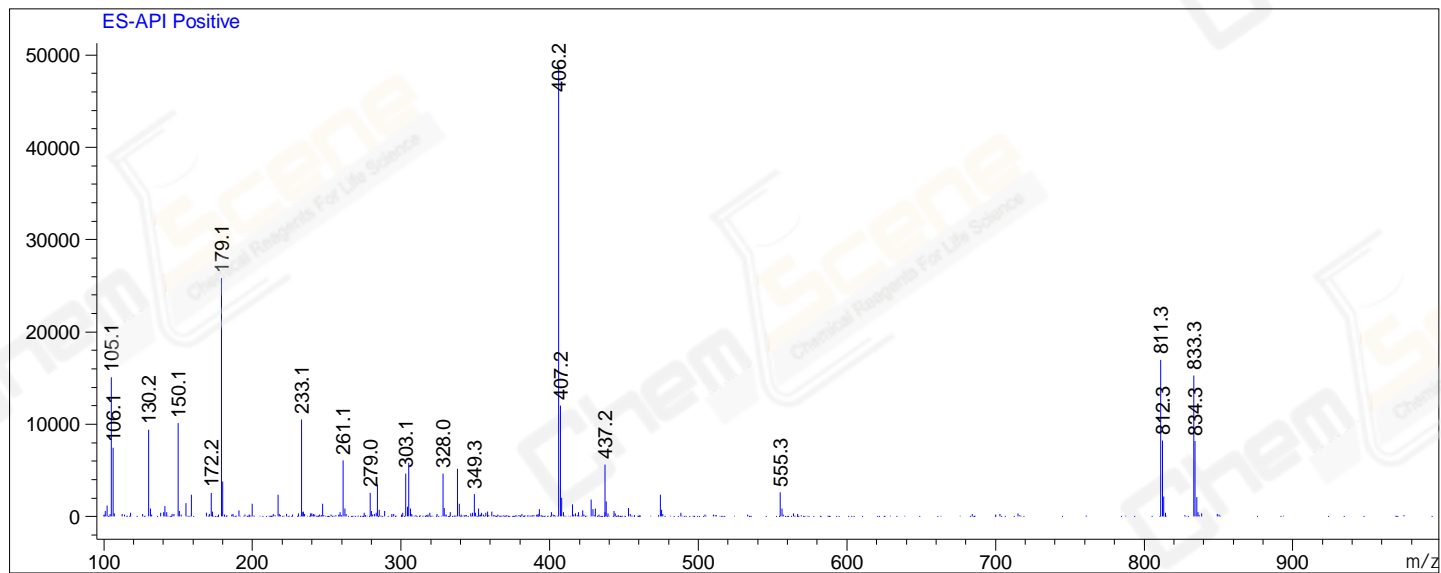
RetTim	Width	Area	Height	Area%	MS (+)
1.48	0.02	0.21	0.08	0.10	130
1.74	0.02	0.28	0.30	0.13	233
1.94	0.01	215.57	221.46	99.58	406
2.03	0.01	0.41	0.44	0.19	105

## Integration Results for MSD1 TIC, MS File

RetTim	Width	Area	Height	Area%	MS (+)
1.97	0.06	2261332.50	599949.69	100.00	406

Ret. Time: 1.97

&lt;&lt;&lt;&lt; POSITIVE SPECTRA &gt;&gt;&gt;&gt;



\*\*\* End of Report \*\*\*