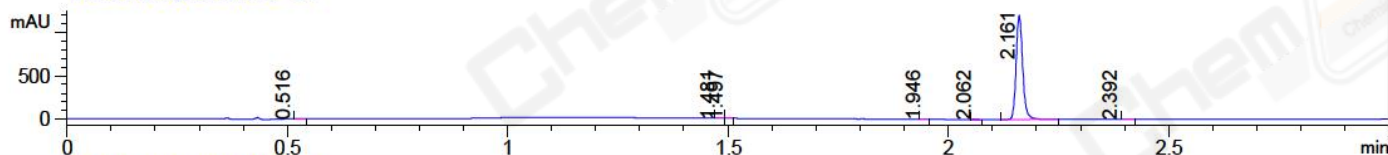
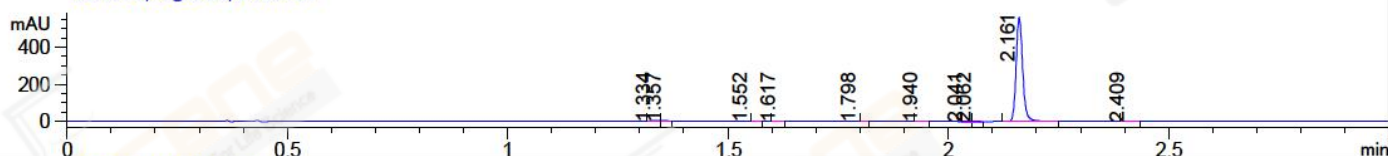


File ..3\Data\20171101\20171101\LJ2017-1031-0026.D Tgt Mass (CHM):
Injection Date : 1 Nov 17 6:19 pm +0800 Seq. Line : 121
Sample Name : LJ2017-1031-0026 Location : P1-E-09
Acq. Operator : SYSTEM Inj : 1
Spec. Reported : MS Integration Inj Volume : 1 ul
Acq. Method : D:\LCMS03\Data\20171101\20171101\1-POS-3MIN.M
Analysis Method : D:\LCMS03\Data\20171101\20171101\1-POS-3MIN.M
Catalog No : CS-B1665 Batch#27048
Method Info : Mobile Phase: A: water(0.01%TFA) B:ACN(0.01%TFA)
Gradient: 5% to 95%B within 1.3 min
Flow Rate :1.8ml/min
Column :SunFire C18, 4.6*50mm,3.5um A-RP-186
Oven Temperature : 45C

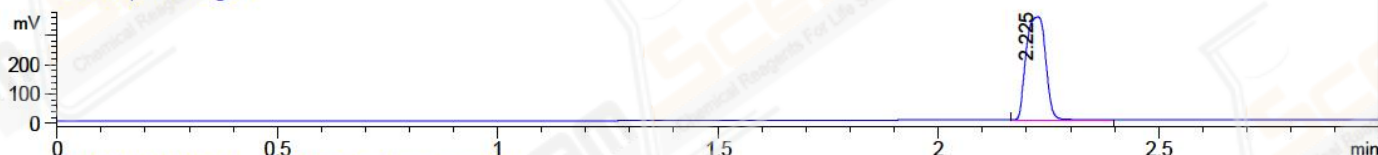
DAD1 A, Sig=214,4 Ref=off



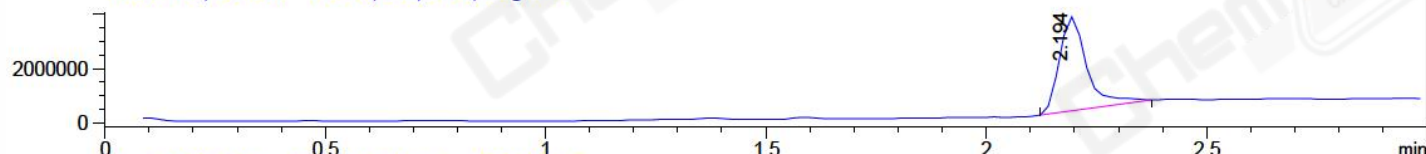
DAD1 B, Sig=254,4 Ref=off



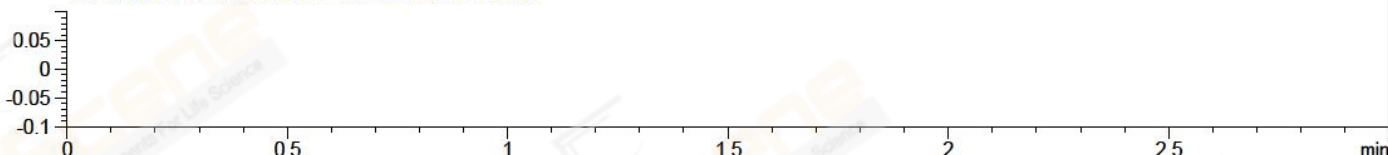
ELS1 A, ELSD Signal



MSD1 TIC, MS File ES-API, Pos, Scan, Frag: 70



Ion 1, MSD1 1, Target Mass 0 +H Positive, EIC=0.7:1.7



Integration Results for DAD1 A, Sig=214,4 Ref=off

RetTim	Width	Area	Height	Area%	MS (+)
0.52	0.02	1.19	-0.15	0.10	254
1.48	0.01	0.99	1.19	0.08	233
1.50	0.01	0.91	1.06	0.07	233
1.95	0.01	0.56	0.64	0.05	233
2.06	0.01	1.68	2.11	0.14	233
2.16	0.02	1236.53	1193.63	99.50	430
2.39	0.02	0.87	0.04	0.07	105

Integration Results for DAD1 B, Sig=254,4 Ref=off

RetTim	Width	Area	Height	Area%	MS (+)
1.33	0.02	1.57	1.52	0.27	233
1.36	0.01	0.71	0.82	0.12	702
1.55	0.02	0.22	0.09	0.04	233
1.62	0.02	0.33	0.29	0.06	233
1.80	0.01	0.18	0.08	0.03	233
1.94	0.02	0.29	0.27	0.05	233
2.04	0.01	0.84	0.96	0.14	233

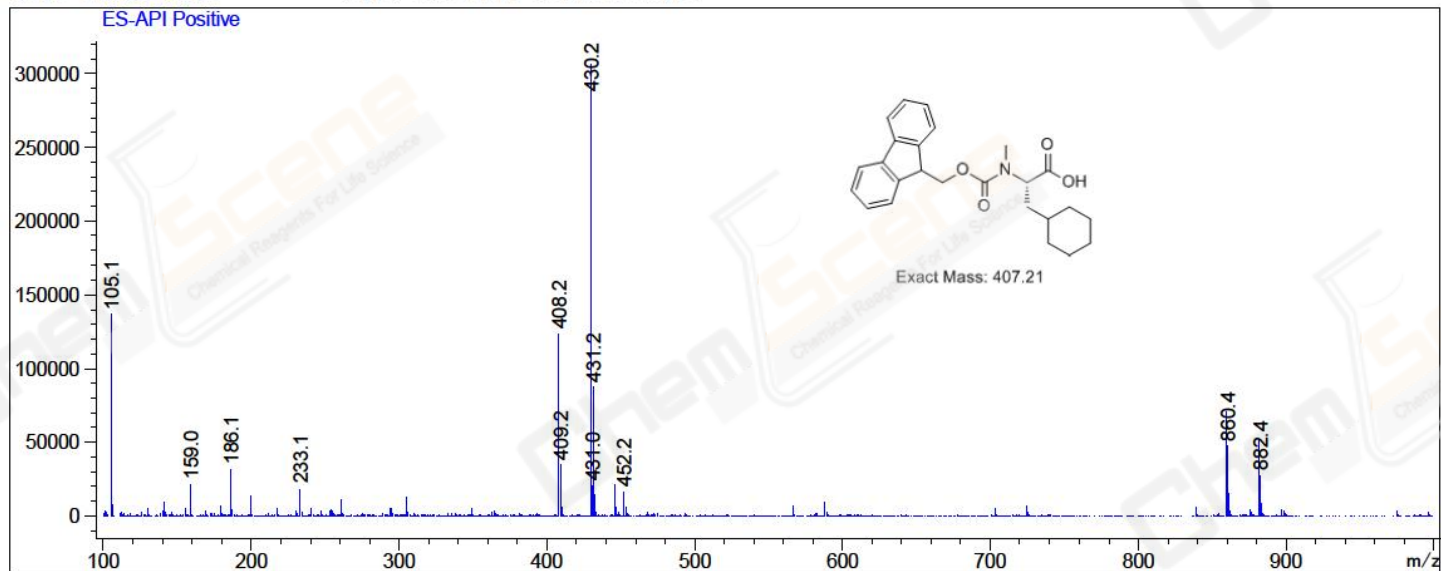
2.06	0.01	0.91	1.09	0.16	233
2.16	0.02	576.27	557.51	99.03	430
2.41	0.03	0.56	0.37	0.10	105

Integration Results for MSD1 TIC, MS File

RetTim	Width	Area	Height	Area%	MS (+)
2.19	0.07	14980499.00	3467602.75	100.00	430

Ret. Time: 2.19

<<<< POSITIVE SPECTRA >>>>



*** End of Report ***