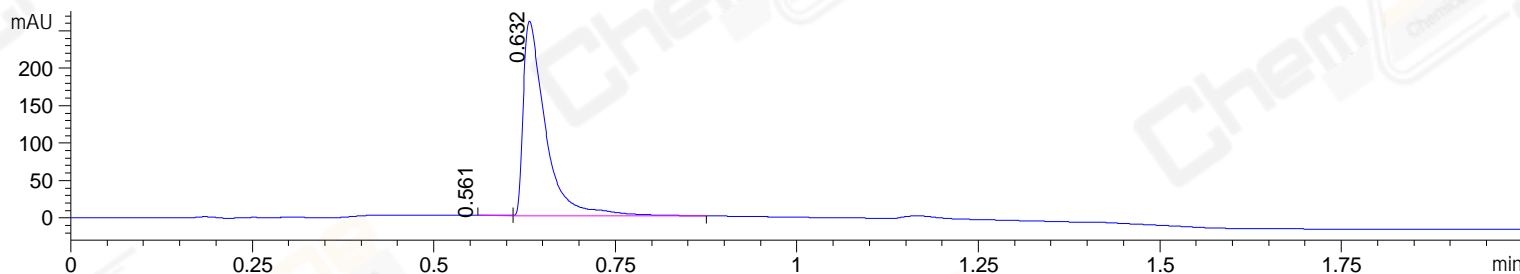
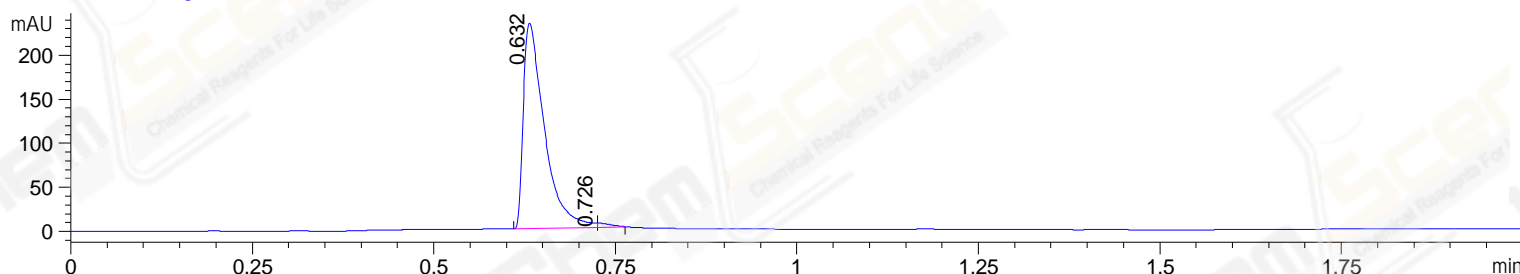


File ..23-05-29\ZSS23789-001-5-UPLC-MS-04-025322.D Tgt Mass (EZX):
 Injection Date : 29-May-23, 16:30:23 Seq. Line : 0
 Sample Name : ZSS23789-001-5 Location : P2-A-11
 Acq. Operator : LY_2278 Inj : 1
 Spec. Reported : MS Integration Inj Volume : 0.2 ul
 Acq. Method : E:\Chem32\1\Methods\1-POS-UPLC2.0MIN(0.8)(150-1000).M
 Analysis Method : E:\CHEM32\1\METHODS\1-POS-UPLC2.0MIN(0.8)(150-1000).M
 CAS NO. : 842148-40-7 WalkUp method: '1-POS-2MIN' Project: LD1756
 Method Info : Mobile Phase: A: water(0.01%TFA) B:ACN(0.01%TFA)
 Gradient: 5% to 95%B within 1.3 min
 Flow Rate :0.8ml/min
 Column :Poroshell 120 EC- C18, 2.1*50mm,1.9um
 Oven Temperature : 45C

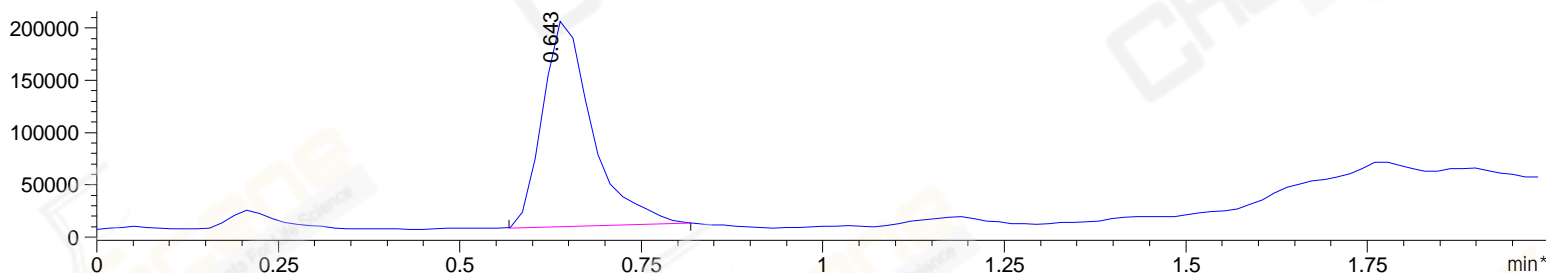
DAD1 A, Sig=214,4 Ref=off



DAD1 B, Sig=254,4 Ref=off



*MSD1 TIC, MS File ES-API, Pos, Scan, Frag: 70



Integration Results for DAD1 A, Sig=214,4 Ref=off

RetTim	Width	Area	Height	Area%	MS(+)
0.56	0.03	0.57	0.02	0.10	358
0.63	0.04	553.41	260.00	99.90	358

Integration Results for DAD1 B, Sig=254,4 Ref=off

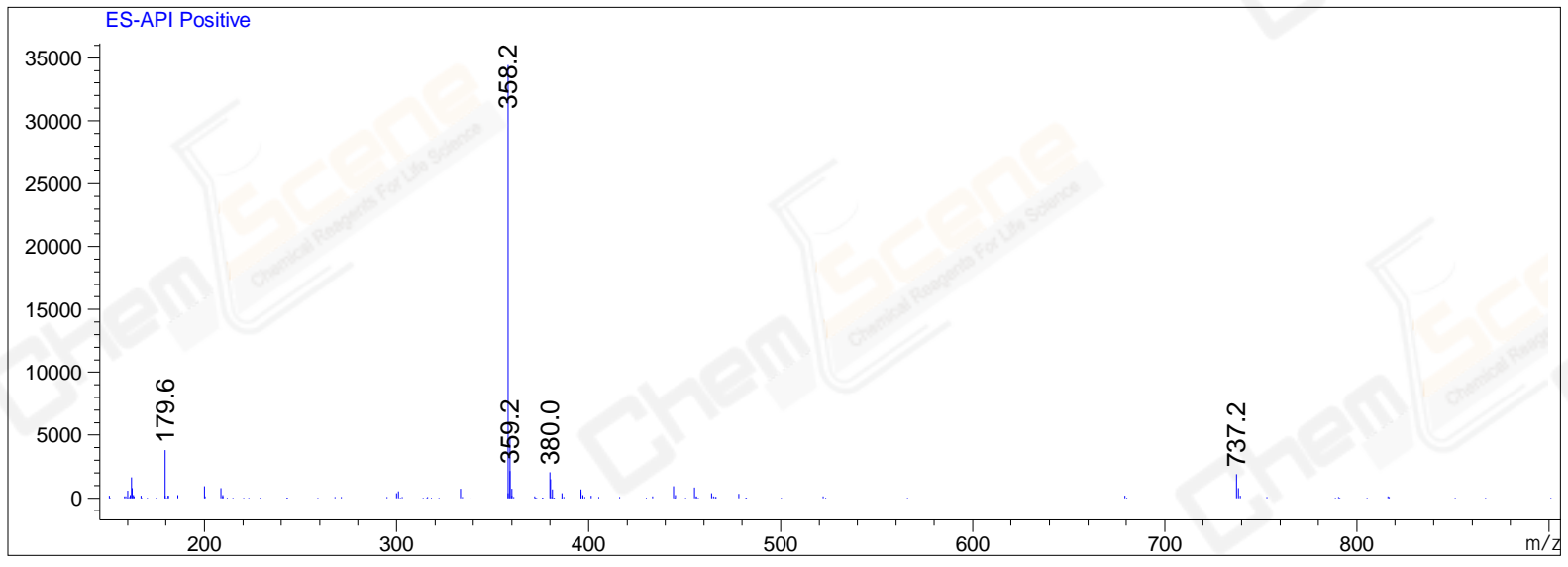
RetTim	Width	Area	Height	Area%	MS(+)
0.63	0.03	472.55	233.64	98.88	358
0.73	0.02	5.37	4.81	1.12	358

Integration Results for MSD1 TIC, MS File

RetTim	Width	Area	Height	Area%	MS(+)
0.64	0.08	935821.94	201745.39	100.00	358

Ret. Time: 0.64

<<<< POSITIVE SPECTRA >>>>



*** End of Report ***