

File ..3\Data\20171109\20171109\BIZ2017-N08-WYQ7.D Tgt Mass (CHM):

Injection Date : 9 Nov 17 12:06 pm +0800 Seq. Line : 37

Sample Name : BIZ2017-N08-WYQ7 Location : P1-B-03

Acq. Operator : SYSTEM Inj : 1

Spec. Reported : MS Integration Inj Volume : 10 ul

Acq. Method : D:\LCMS03\Data\20171109\20171109\1-POS-3MIN-(100-2000).M

Analysis Method : D:\LCMS03\Data\20171109\20171109\1-POS-3MIN-(100-2000).M

Catalog No : CS-8039 Batch#27154

Method Info : Mobile Phase: A: water(0.01%TFA) B:ACN(0.01%TFA)

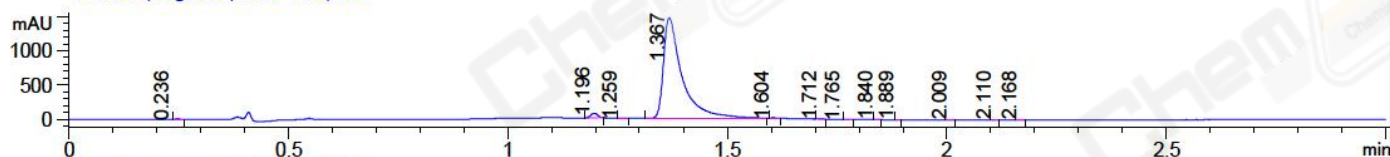
Gradient: 5% to 95%B within 1.3 min

Flow Rate :1.8ml/min

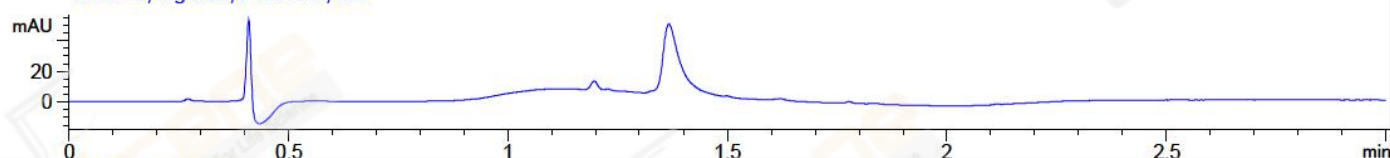
Column :SunFire C18, 4.6*50mm,3.5um A-RP-186

Oven Temperature : 45C

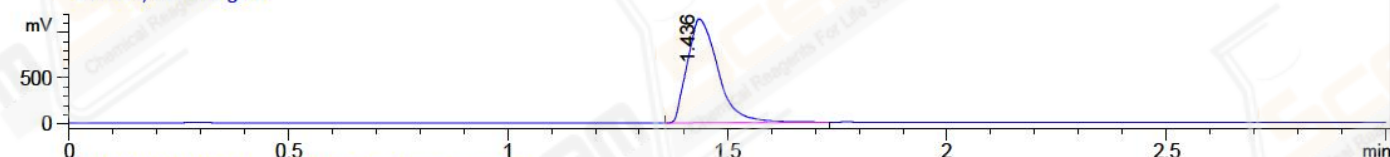
DAD1 A, Sig=214,4 Ref=360,100



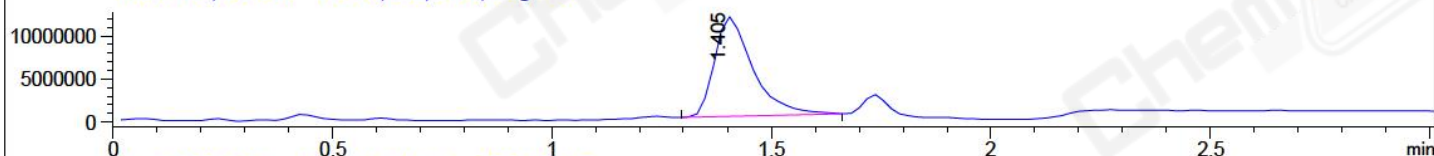
DAD1 B, Sig=254,4 Ref=360,100



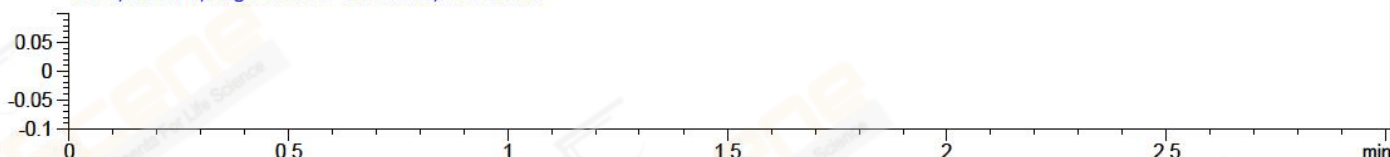
ELS1 A, ELSD Signal



MSD1 TIC, MS File ES-API, Pos, Scan, Frag: 120



Ion 1, MSD1 1, Target Mass 0 +H Positive, EIC=0.7:1.7



Integration Results for DAD1 A, Sig=214,4 Ref=360,100

RetTim	Width	Area	Height	Area%	MS (+)
0.24	0.01	4.81	-0.69	0.11	235
1.20	0.02	73.28	68.58	1.67	136
1.26	0.01	0.92	1.20	0.02	136
1.37	0.05	4288.82	1461.30	98.01	1231
1.60	0.01	3.53	5.28	0.08	1231
1.71	0.01	2.14	2.52	0.05	258
1.76	0.01	0.50	-0.77	0.01	258
1.84	0.01	0.86	1.30	0.02	1231
1.89	0.01	0.19	0.43	0.00	1231
2.01	0.01	0.26	0.36	0.01	130
2.11	0.01	0.55	0.66	0.01	261
2.17	0.01	0.16	0.28	0.00	431

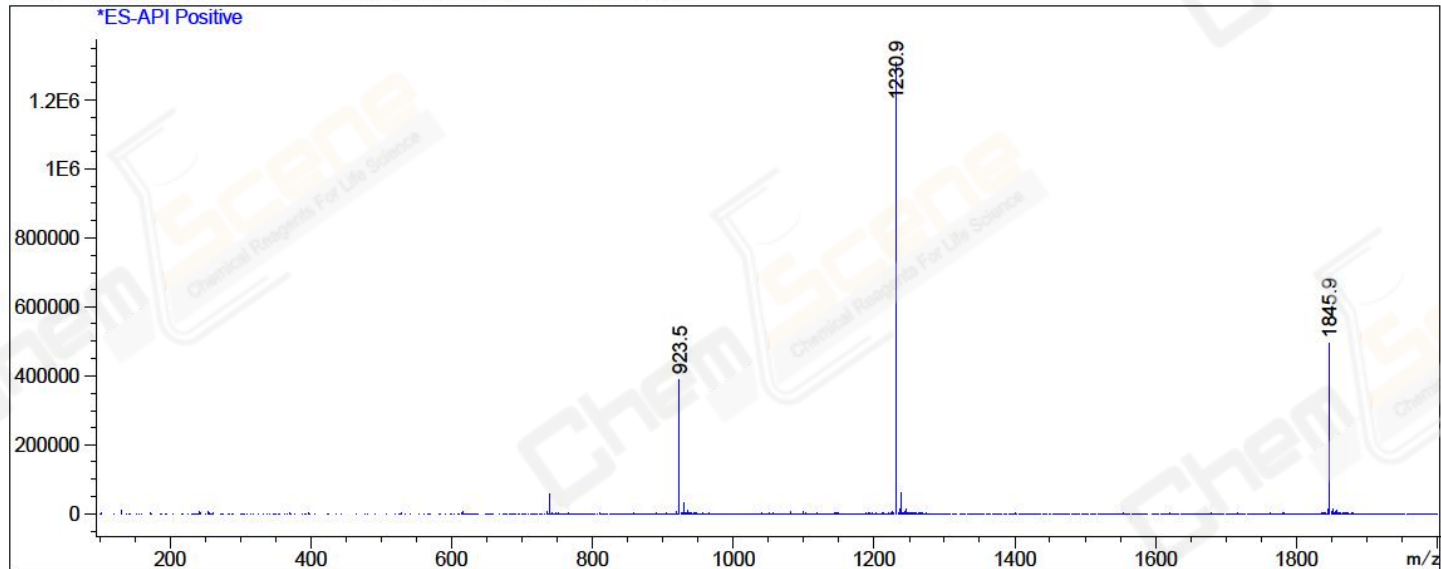
Integration Results for DAD1 B, Sig=254,4 Ref=360,100

RetTim	Width	Area	Height	Area%	MS (+)
--------	-------	------	--------	-------	--------

Integration Results for MSD1 TIC, MS File

RetTim	Width	Area	Height	Area%	MS(+)
1.41	0.09	70202144.00	11544694.00	100.00	1231

Ret. Time: 1.41 <<<< POSITIVE SPECTRA >>>>



*** End of Report ***