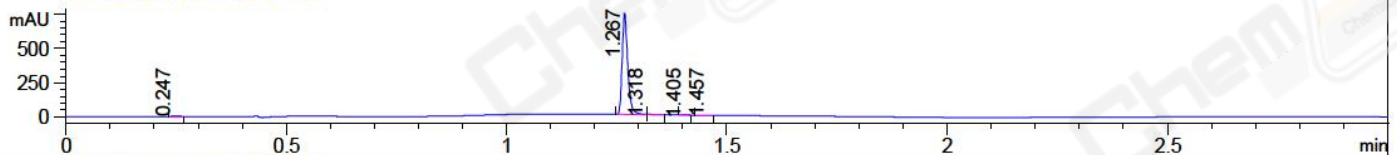
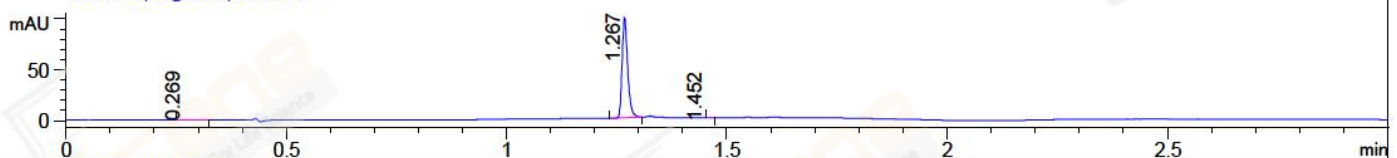


File ..Data\20171116\20171116-2\BIZ2017-N16-WYQ3.D Tgt Mass (CHM):
Injection Date : 16 Nov 17 12:57 pm +0800 Seq. Line : 14
Sample Name : BIZ2017-N16-WYQ3 Location : P1-D-03
Acq. Operator : SYSTEM Inj : 1
Spec. Reported : MS Integration Inj Volume : 1 ul
Acq. Method : D:\LCMS03\Data\20171116\20171116-2\1-POS-3MIN.M
Analysis Method : D:\LCMS03\Data\20171116\20171116-2\1-POS-3MIN.M
Catalog No : CS-6150 Batch#27345
Method Info : Mobile Phase: A: water(0.01%TFA) B:ACN(0.01%TFA)
Gradient: 5% to 95%B within 1.3 min
Flow Rate :1.8ml/min
Column :SunFire C18, 4.6*50mm,3.5um A-RP-186
Oven Temperature : 45C

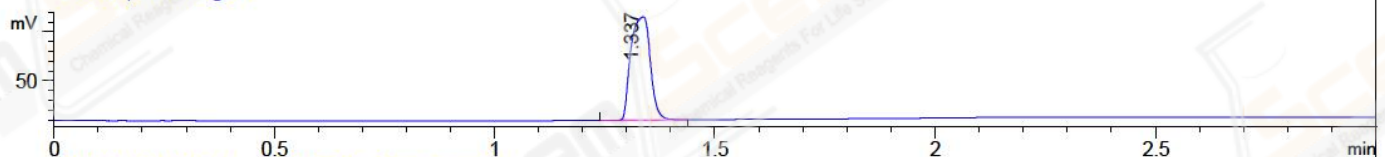
DAD1 A, Sig=214,4 Ref=off



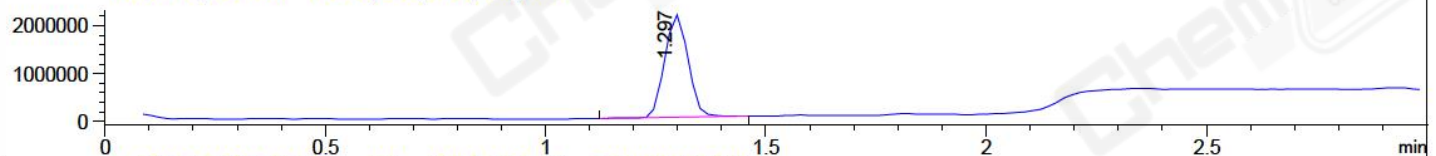
DAD1 B, Sig=254,4 Ref=off



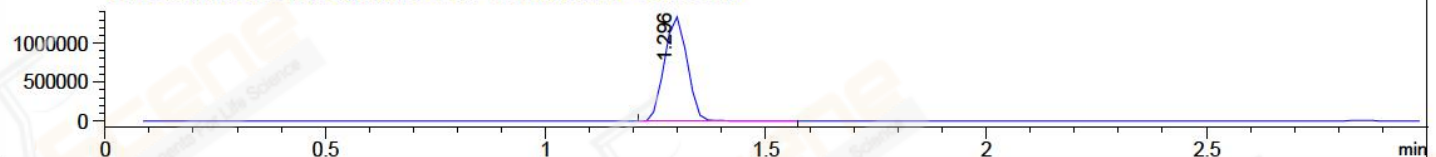
ELS1 A, ELSD Signal



MSD1 TIC, MS File ES-API, Pos, Scan, Frag: 70



Ion 381.1, MSD1 381.1, Target Mass 380.1 +H Positive, EIC=380.8:381.8



Integration Results for DAD1 A, Sig=214,4 Ref=off

RetTim	Width	Area	Height	Area%	MS (+)
0.25	0.01	3.35	4.19	0.51	303
1.27	0.01	654.47	743.29	98.94	381
1.32	0.02	2.55	2.40	0.39	381
1.41	0.02	0.28	0.27	0.04	303
1.46	0.03	0.86	0.49	0.13	303

Integration Results for DAD1 B, Sig=254,4 Ref=off

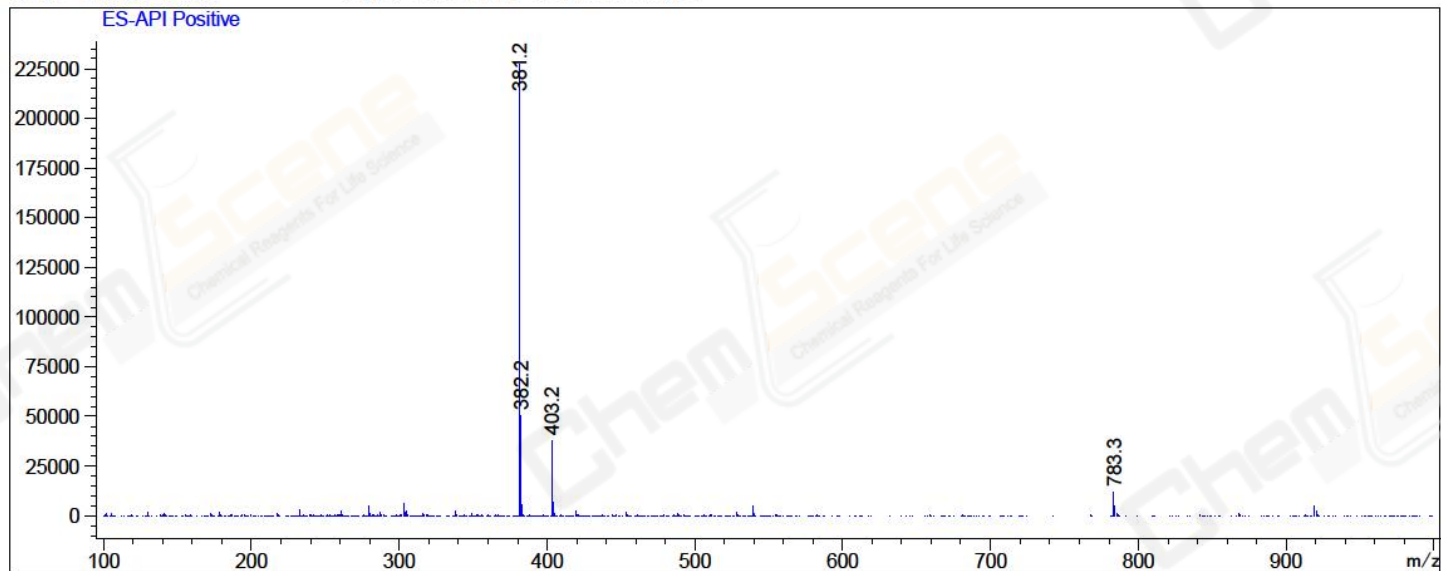
RetTim	Width	Area	Height	Area%	MS (+)
0.27	0.02	0.19	0.15	0.22	303
1.27	0.01	87.15	98.41	99.68	381
1.45	0.01	0.09	0.04	0.11	303

Integration Results for MSD1 TIC, MS File

RetTim	Width	Area	Height	Area%	MS (+)
1.30	0.06	7895530.50	2145808.00	100.00	381

Ret. Time: 1.30

<<<< POSITIVE SPECTRA >>>>



*** End of Report ***