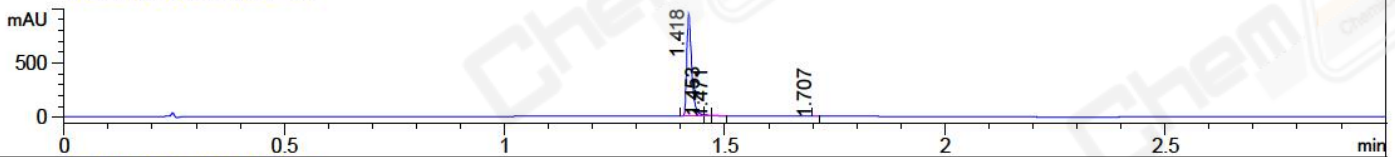
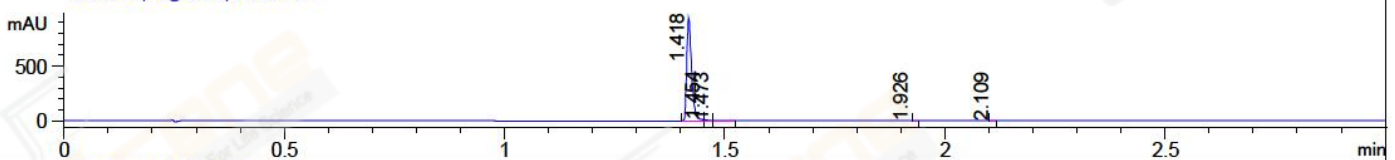


File ..\Data\20171122\20171122\BIZ2017-N22-WYQ18.D Tgt Mass (CHM):  
 Injection Date : 22 Nov 17 6:35 pm +0800 Seq. Line : 119  
 Sample Name : BIZ2017-N22-WYQ18 Location : P2-B-04  
 Acq. Operator : SYSTEM Inj : 1  
 Spec. Reported : MS Integration Inj Volume : 1 ul  
 Acq. Method : D:\LCMS03\Data\20171122\20171122\1-POS-3MIN(1.2ML).M  
 Analysis Method : D:\LCMS03\Data\20171122\20171122\1-POS-3MIN(1.2ML).M  
 Catalog No : CS-1229 Batch#27360  
 Method Info : Mobile Phase: A: water(0.01%TFA) B:ACN(0.01%TFA)  
 Gradient: 5% to 95%B within 1.3 min  
 Flow Rate :1.2ml/min  
 Column :Poroshell 120 EC-C18, 3.0\*50mm,2.7um A-RP-170  
 Oven Temperature : 45C

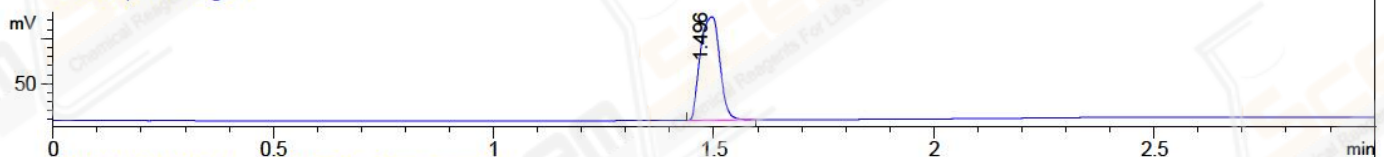
DAD1 A, Sig=214,4 Ref=off



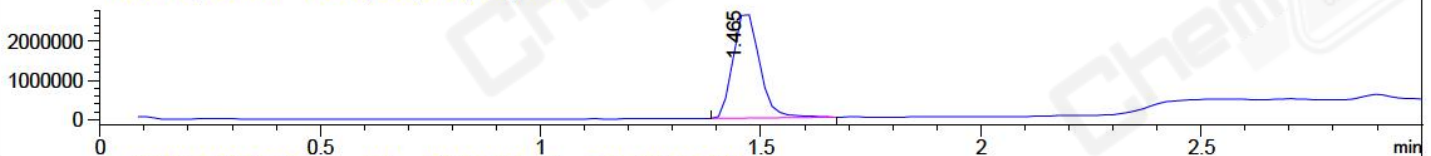
DAD1 B, Sig=254,4 Ref=off



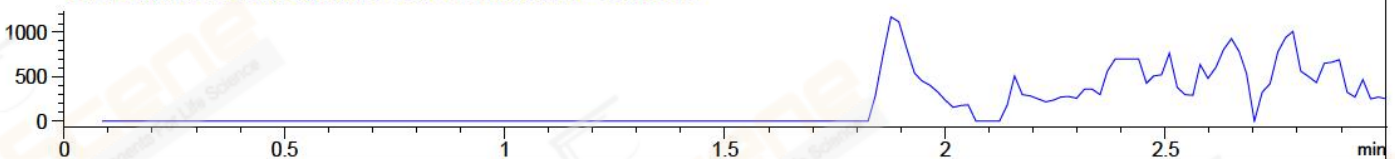
ELS1 A, ELSD Signal



MSD1 TIC, MS File ES-API, Pos, Scan, Frag: 70



Ion 603.2, MSD1 603.2, Target Mass 602.2 +H Positive, EIC=602.9:603.9



Integration Results for DAD1 A, Sig=214,4 Ref=off

RetTim	Width	Area	Height	Area%	MS (+)
1.42	0.01	737.47	945.08	98.64	254
1.45	0.01	6.62	9.56	0.89	254
1.47	0.02	2.75	2.78	0.37	254
1.71	0.01	0.77	1.16	0.10	507

Integration Results for DAD1 B, Sig=254,4 Ref=off

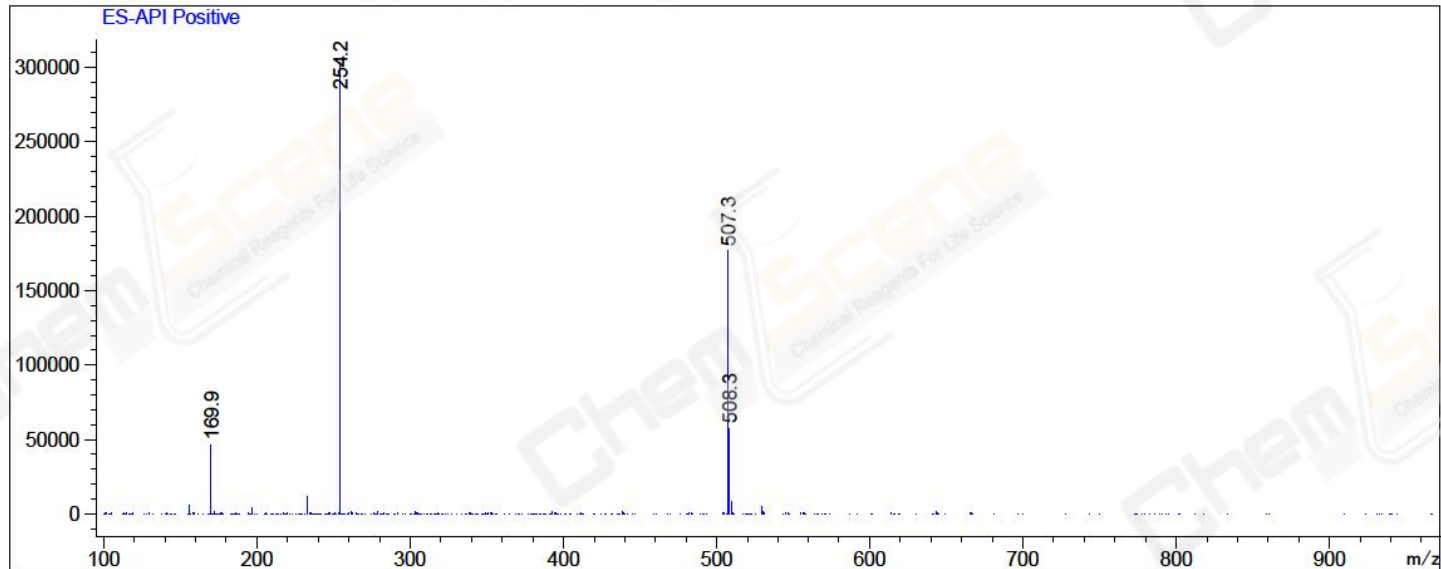
RetTim	Width	Area	Height	Area%	MS (+)
1.42	0.01	740.42	952.23	98.60	254
1.45	0.01	6.98	9.52	0.93	254
1.47	0.02	3.05	2.72	0.41	254
1.93	0.01	0.40	0.40	0.05	233
2.11	0.01	0.11	0.22	0.01	233

Integration Results for MSD1 TIC, MS File

RetTim	Width	Area	Height	Area%	MS (+)
--------	-------	------	--------	-------	--------

1.47 0.07 11071741.00 2735335.00 100.00 254

Ret. Time: 1.47 <<<< POSITIVE SPECTRA >>>>



\*\*\* End of Report \*\*\*