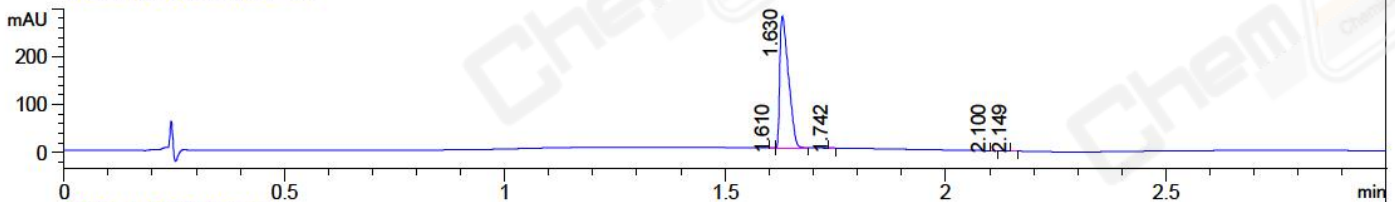
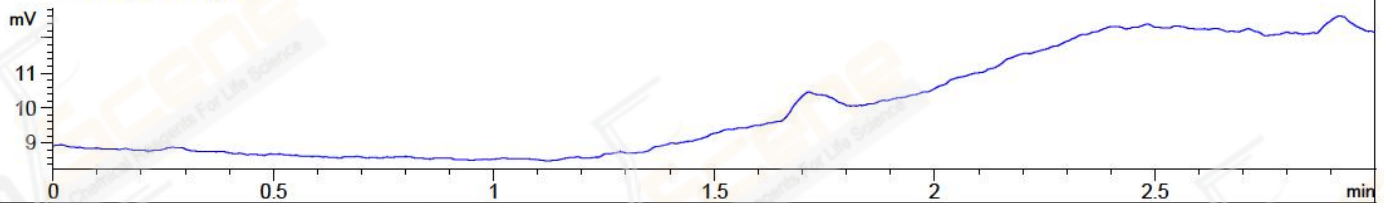


File ..\Data\20171122\20171122\BIZ2017-N22-WYQ12.D Tgt Mass (CHM):  
 Injection Date : 22 Nov 17 6:06 pm +0800 Seq. Line : 113  
 Sample Name : BIZ2017-N22-WYQ12 Location : P2-A-09  
 Acq. Operator : SYSTEM Inj : 1  
 Spec. Reported : MS Integration Inj Volume : 1 ul  
 Acq. Method : D:\LCMS03\Data\20171122\20171122\1-POS-3MIN(1.2ML).M  
 Analysis Method : D:\LCMS03\Data\20171122\20171122\1-POS-3MIN(1.2ML).M  
 Catalog No : CS-5241 Batch#27368  
 Method Info : Mobile Phase: A: water(0.01%TFA) B:ACN(0.01%TFA)  
 Gradient: 5% to 95%B within 1.3 min  
 Flow Rate :1.2ml/min  
 Column :Poroshell 120 EC-C18, 3.0\*50mm,2.7um A-RP-170  
 Oven Temperature : 45C

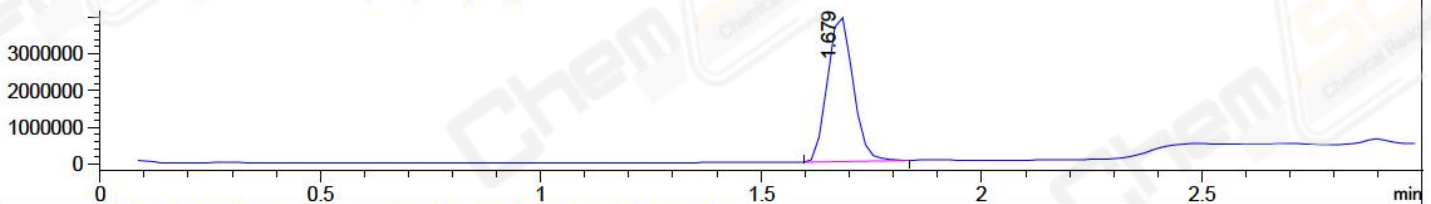
DAD1 A, Sig=214,4 Ref=off



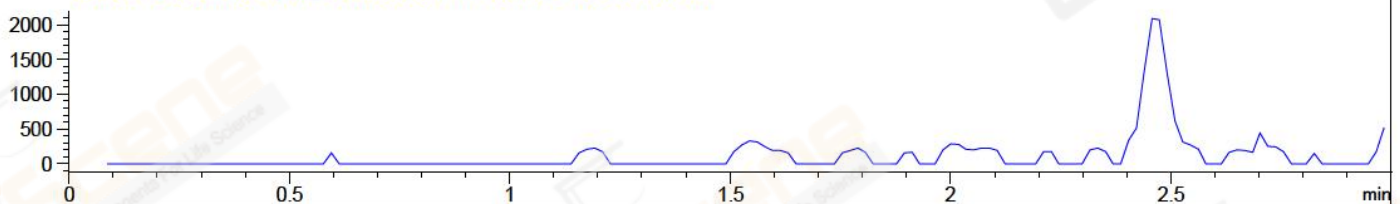
ELS1 A, ELSD Signal



MSD1 TIC, MS File ES-API, Pos, Scan, Frag: 70



Ion 354.1, MSD1 354.1, Target Mass 353.1 +H Positive, EIC=353.8:354.8



Integration Results for DAD1 A, Sig=214,4 Ref=off

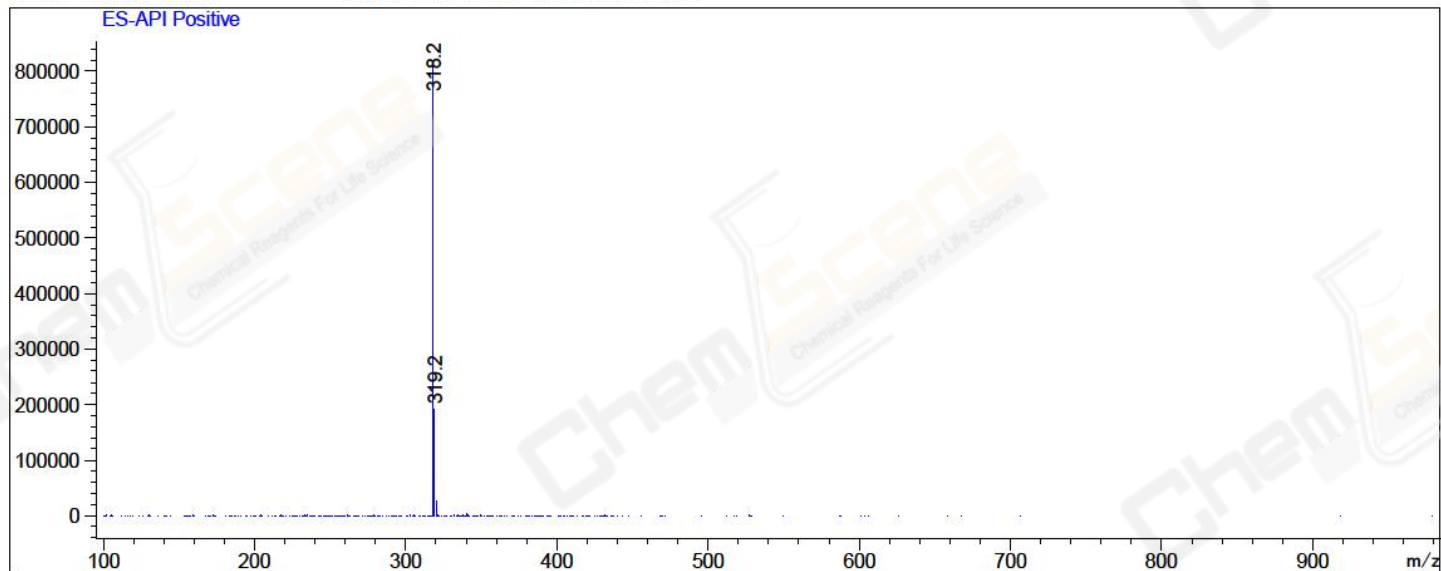
RetTim	Width	Area	Height	Area%	MS (+)
1.61	0.01	0.11	0.30	0.03	318
1.63	0.02	372.55	275.29	99.79	318
1.74	0.01	0.33	0.76	0.09	318
2.10	0.01	0.23	-0.02	0.06	318
2.15	0.01	0.12	-0.00	0.03	233

Integration Results for MSD1 TIC, MS File

RetTim	Width	Area	Height	Area%	MS (+)
1.68	0.06	16044238.00	3992913.75	100.00	318

Ret. Time: 1.68

<<<< POSITIVE SPECTRA >>>>



\*\*\* End of Report \*\*\*