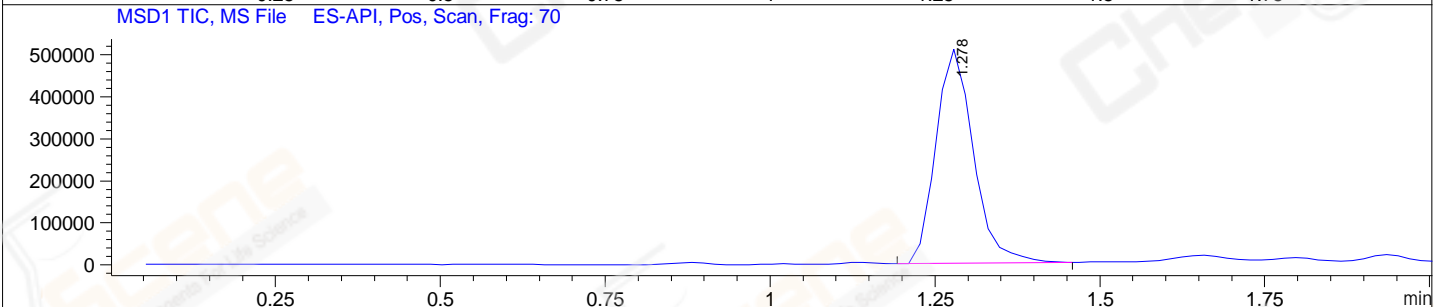
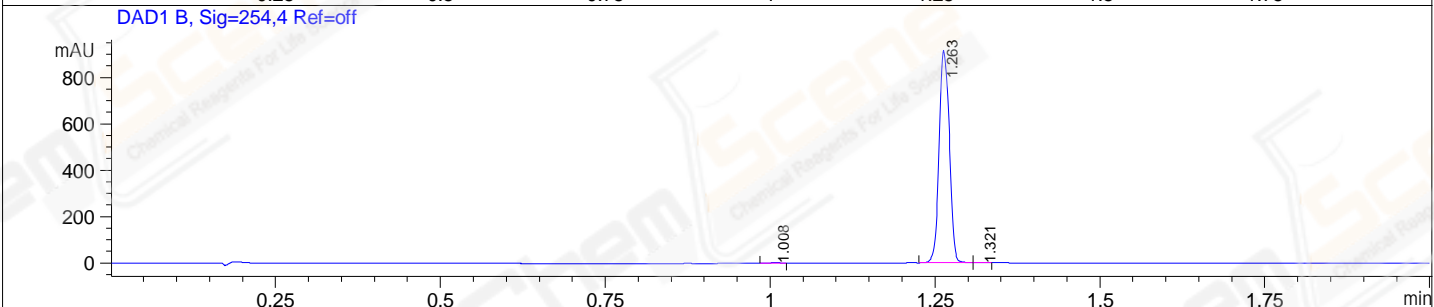
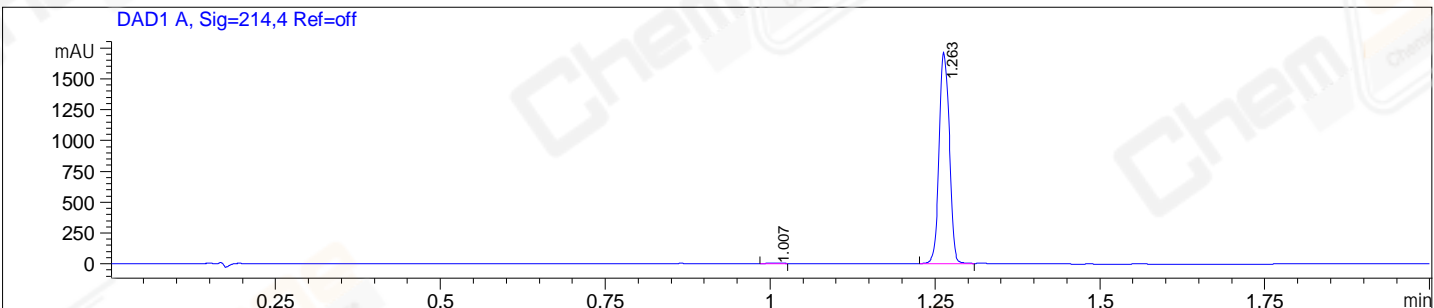


File E:\ChemStation\1\DATA\2023\2023-06\2023-06-25\BIZ2023-624-WLQ23-LCMS-20-006482.D
 Injection Date : 25-Jun-23, 13:56:37 Tgt Mass(EZX) :
 Sample Name : BIZ2023-624-WLQ23 Location : P1-A-09
 Acq. Operator : LY_2278 Inj : 1
 Spec. Reported : MS Integration Inj Volume : 1 ul
 Acq. Method : E:\ChemStation\1\Methods\1-POS-2MIN(1.5ML)-(150-1000).M
 Analysis Method : E:\CHEMSTATION\1\METHODS\1-POS-2MIN(1.5ML)-(150-1000).M
 CAS NO. : 667880-11-7 WalkUp method: '1-POS-2MIN(150-1000)' Project: BIZ2023
 Method Info : Mobile Phase: A: water(0.01%FA) B:ACN(0.01%FA)
 Flow Rate :1.5ml/min
 Column :Shim-pack Scepter C18-120, 3.0*33mm,3um
 Oven Temperature : 45C



Integration Results for DAD1 A, Sig=214,4 Ref=off

RetTim	Width	Area	Height	Area%
1.01	0.02	5.01	5.13	0.27
1.26	0.02	1851.36	1716.92	99.73

Integration Results for DAD1 B, Sig=254,4 Ref=off

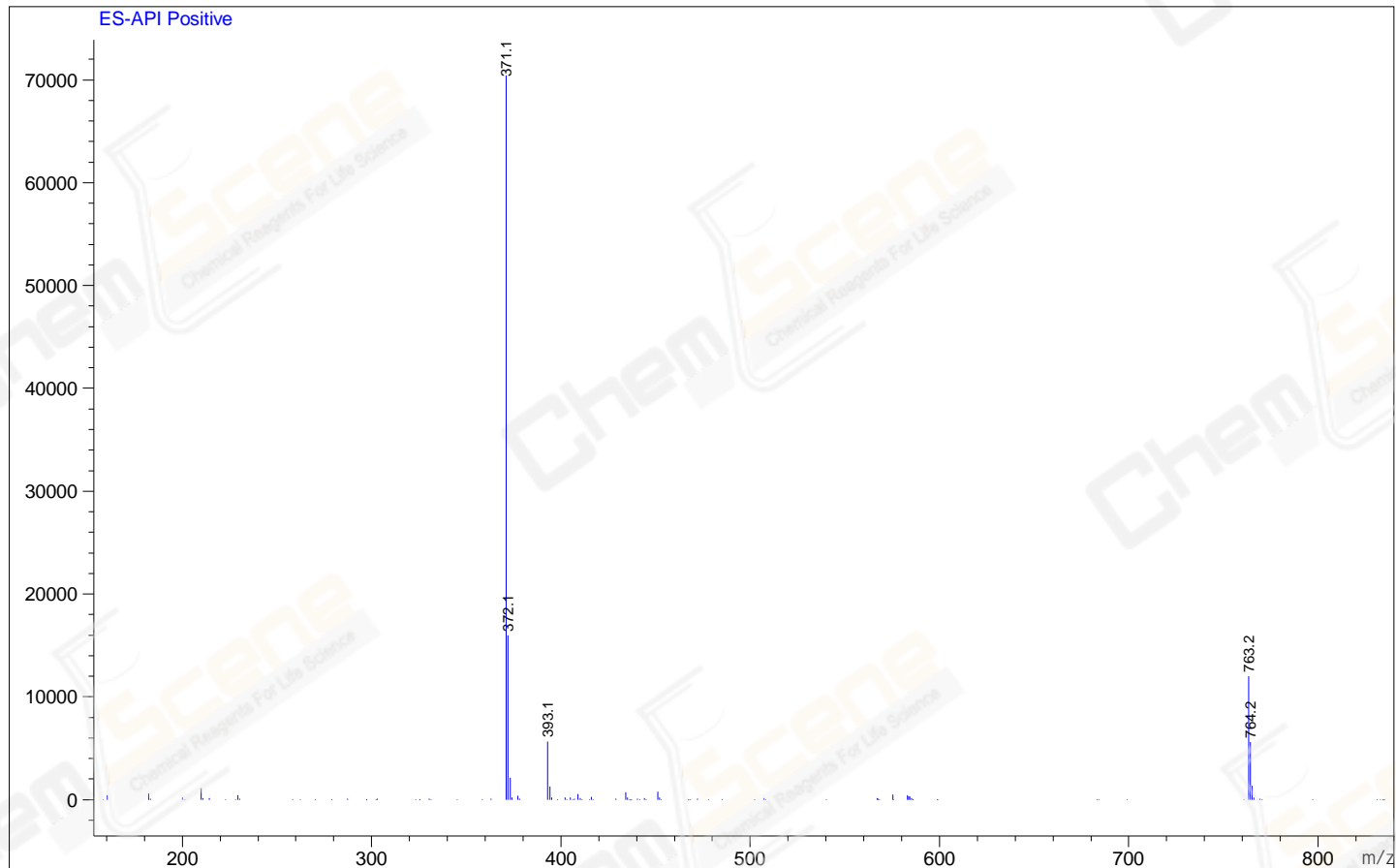
RetTim	Width	Area	Height	Area%
1.01	0.02	2.65	2.82	0.27
1.26	0.02	988.74	917.27	99.62
1.32	0.01	1.12	1.31	0.11

Integration Results for MSD1 TIC, MS File

RetTim	Width	Area	Height	Area%
1.28	0.06	2023709.25	508586.91	100.00

Ret. Time: 1.28

<<<< POSITIVE SPECTRA >>>>



*** End of Report ***