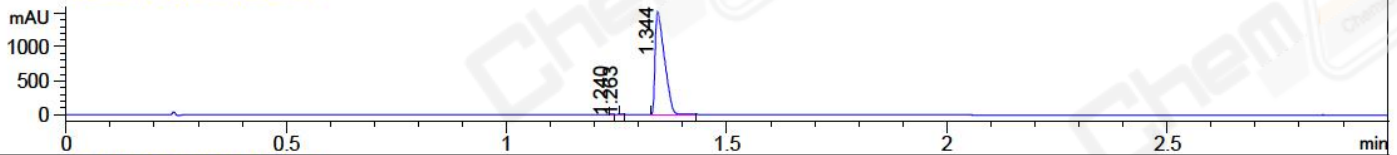
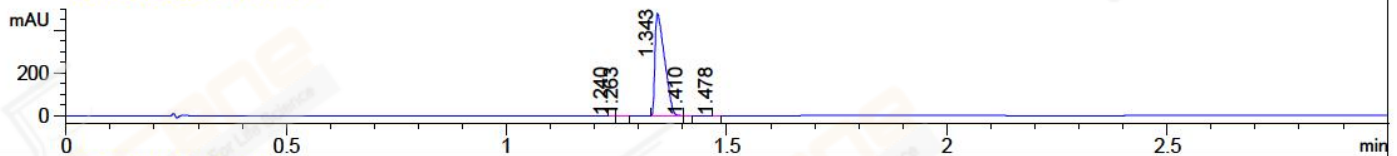


File ..3\Data\20171127\20171127\BIZ2017-N27-WYQ3.D Tgt Mass (CHM):
 Injection Date : 27 Nov 17 6:07 pm +0800 Seq. Line : 113
 Sample Name : BIZ2017-N27-WYQ3 Location : P2-A-09
 Acq. Operator : SYSTEM Inj : 1
 Spec. Reported : MS Integration Inj Volume : 1 ul
 Acq. Method : D:\LCMS03\Data\20171127\20171127\1-POS-3MIN(1.2ML).M
 Analysis Method : D:\LCMS03\Data\20171127\20171127\1-POS-3MIN(1.2ML).M
 Catalog No : CS-8132 Batch#27440
 Method Info : Mobile Phase: A: water(0.01%TFA) B:ACN(0.01%TFA)
 Gradient: 5% to 95%B within 1.3 min
 Flow Rate :1.2ml/min
 Column :Poroshell 120 EC-C18, 3.0*50mm,2.7um A-RP-170
 Oven Temperature : 45C

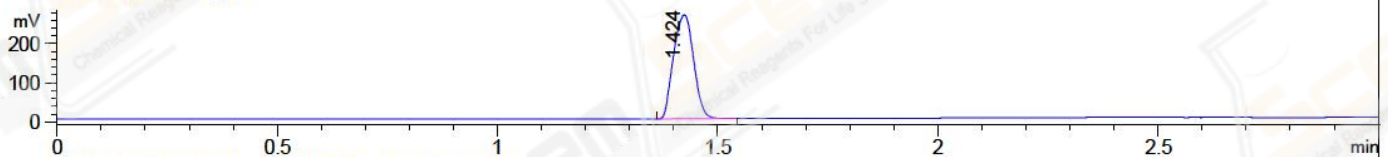
DAD1 A, Sig=214,4 Ref=off



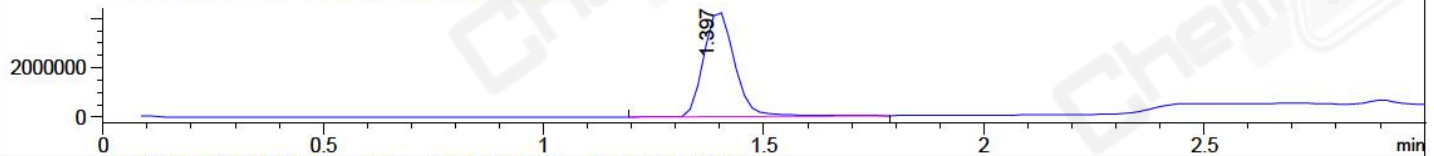
DAD1 B, Sig=254,4 Ref=off



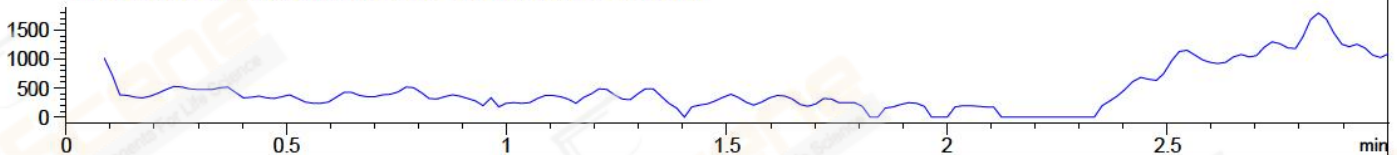
ELS1 A, ELSD Signal



MSD1 TIC, MS File ES-API, Pos, Scan, Frag: 70



Ion 253.1, MSD1 253.1, Target Mass 252.1 +H Positive, EIC=252.8:253.8



Integration Results for DAD1 A, Sig=214,4 Ref=off

| RetTim | Width | Area | Height | Area% | MS (+) |
|--------|-------|---------|---------|-------|--------|
| 1.24 | 0.01 | 0.11 | 0.23 | 0.00 | ND |
| 1.26 | 0.01 | 0.25 | 0.48 | 0.01 | 215 |
| 1.34 | 0.02 | 2192.89 | 1509.45 | 99.98 | 199 |

Integration Results for DAD1 B, Sig=254,4 Ref=off

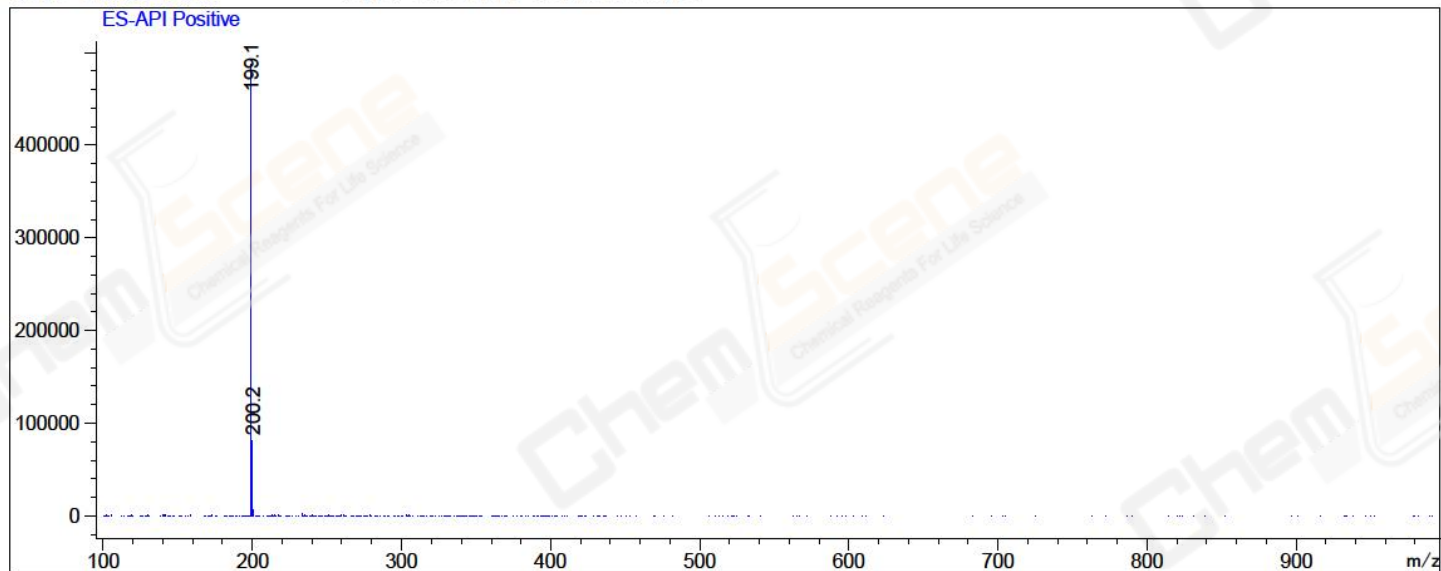
| RetTim | Width | Area | Height | Area% | MS (+) |
|--------|-------|--------|--------|-------|--------|
| 1.24 | 0.01 | 0.04 | 0.08 | 0.01 | ND |
| 1.26 | 0.01 | 0.38 | 0.68 | 0.05 | 215 |
| 1.34 | 0.03 | 726.31 | 481.47 | 99.85 | 199 |
| 1.41 | 0.01 | 0.61 | 0.77 | 0.08 | 199 |
| 1.48 | 0.01 | 0.07 | 0.13 | 0.01 | 199 |

Integration Results for MSD1 TIC, MS File

| RetTim | Width | Area | Height | Area% | MS (+) |
|--------|-------|-------------|------------|--------|--------|
| 1.40 | 0.08 | 20612976.00 | 4257882.50 | 100.00 | 199 |

Ret. Time: 1.40

<<<< POSITIVE SPECTRA >>>>



*** End of Report ***