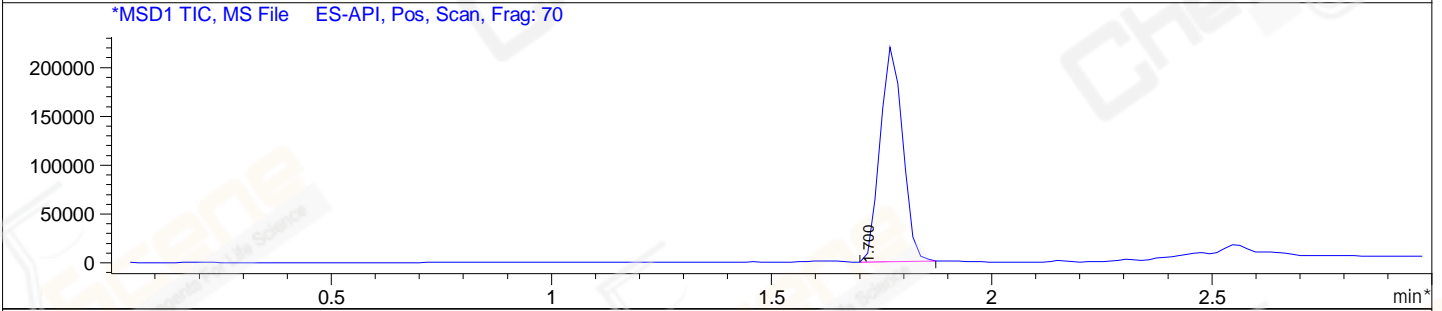
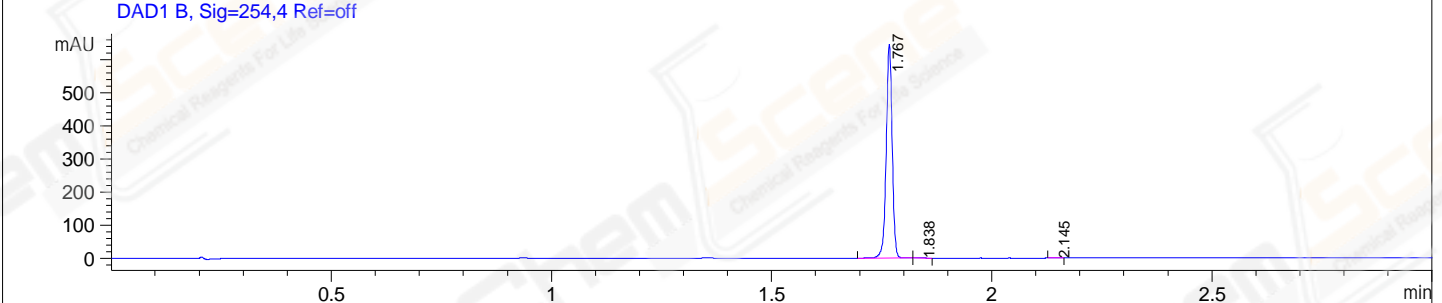
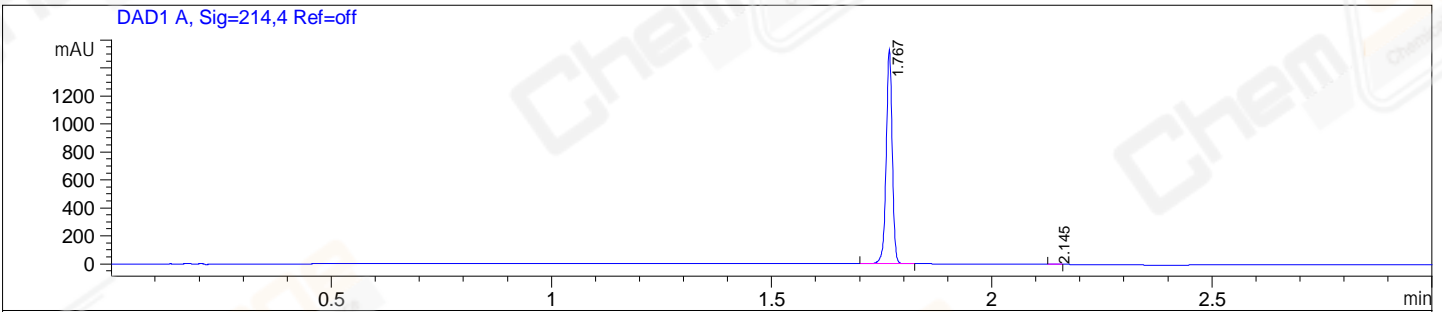


File E:\ChemStation\1\DATA\2023\2023-06\2023-06-29\BIZ2023-628-SCH32-UPLC-MS-10-006752.D
 Injection Date : 29-Jun-23, 12:29:02 Tgt Mass(EZX) :
 Sample Name : BIZ2023-628-SCH32 Location : P1-C-10
 Acq. Operator : LY_2278 Inj : 1
 Spec. Reported : MS Integration Inj Volume : 1 ul
 Acq. Method : E:\ChemStation\1\Methods\1-POS-UPLC3.0MIN(1.2)(150-1000).M
 Analysis Method : E:\CHEMSTATION\1\METHODS\1-POS-UPLC3.0MIN(1.2)(150-1000).M
 CAS NO. : 10179-57-4 WalkUp method: '1-POS-3MIN' Project: CPK2023
 Method Info : Mobile Phase: A: water(0.01%TFA) B:ACN(0.01%TFA)
 Gradient: 5% to 95%B within 2.0 min
 Flow Rate :1.2ml/min
 Column :Shim-pack Scepter C18-120, 3.0*33mm,3um
 Oven Temperature : 45C



Integration Results for DAD1 A, Sig=214,4 Ref=off

RetTim	Width	Area	Height	Area%
1.77	0.01	1460.33	1527.79	99.85
2.15	0.01	2.24	2.57	0.15

Integration Results for DAD1 B, Sig=254,4 Ref=off

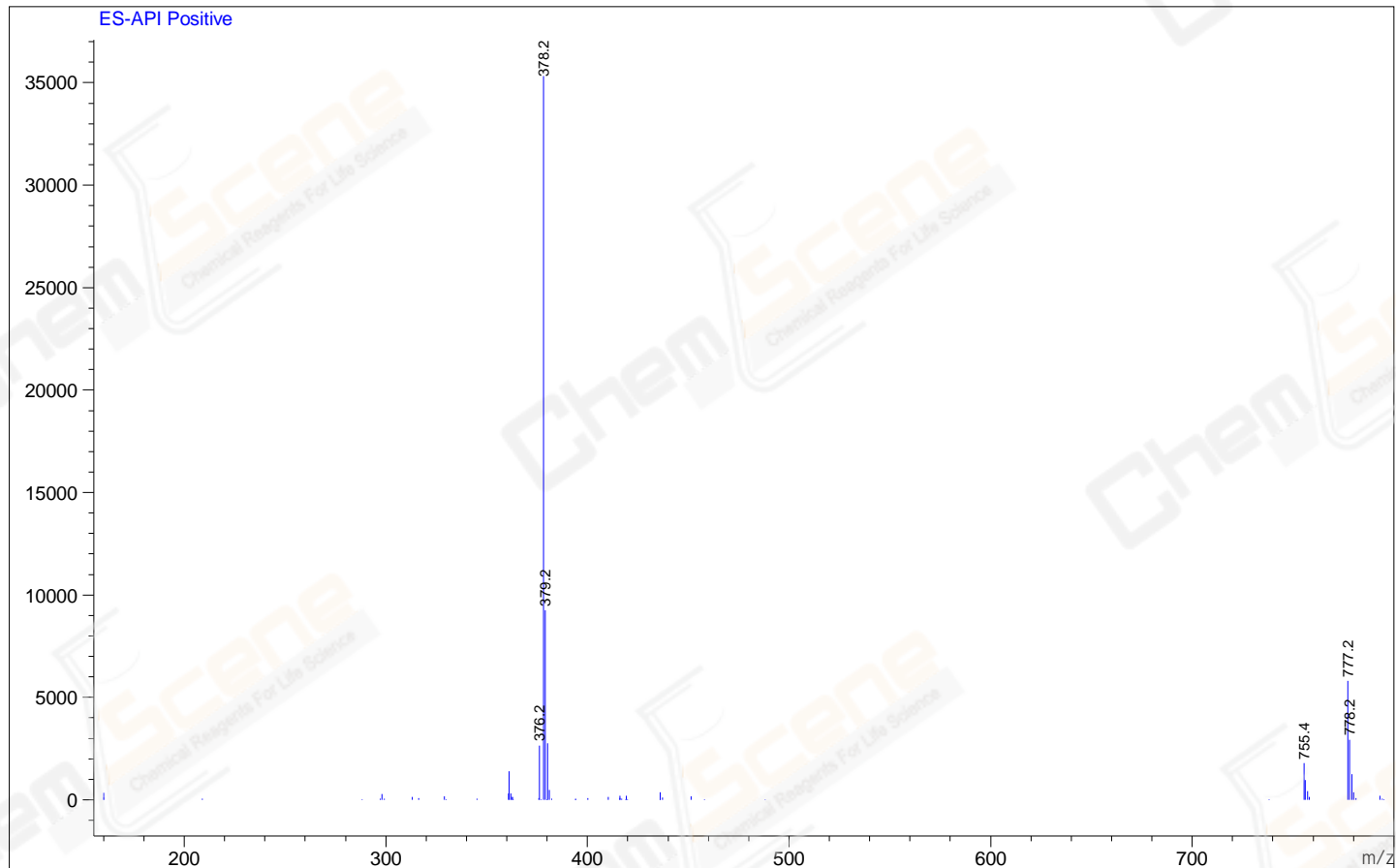
RetTim	Width	Area	Height	Area%
1.77	0.01	609.08	645.30	99.70
1.84	0.01	0.59	0.64	0.10
2.15	0.01	1.24	1.42	0.20

Integration Results for MSD1 TIC, MS File

RetTim	Width	Area	Height	Area%
1.70	0.06	782954.75	50.37	100.00

Ret. Time: 1.70

<<<< POSITIVE SPECTRA >>>>



*** End of Report ***