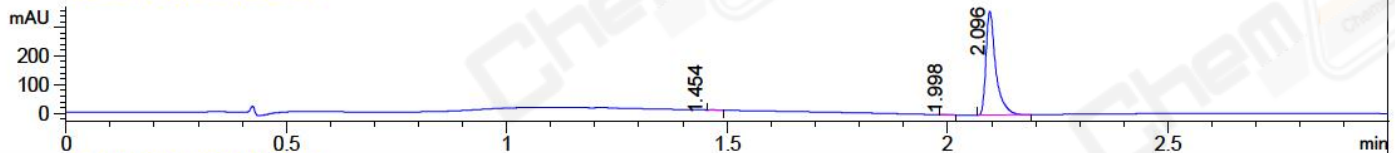
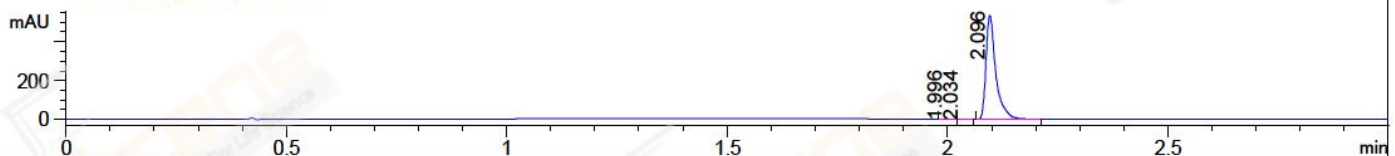


File ..MS03\Data\20171130\20171130-1\YW4881-20-1.D Tgt Mass (CHM):
Injection Date : 30 Nov 17 3:27 pm +0800 Seq. Line : 70
Sample Name : YW4881-20-1 Location : P1-D-01
Acq. Operator : ZLJ_587 Inj : 1
Spec. Reported : MS Integration Inj Volume : 1 ul
Acq. Method : D:\LCMS03\Data\20171130\20171130-1\1-POS-3MIN.M
Analysis Method : D:\LCMS03\Data\20171130\20171130-1\1-POS-3MIN.M
Catalog No : CS-W000110 Batch#27590
Method Info : Mobile Phase: A: water(0.01%TFA) B:ACN(0.01%TFA)
Gradient: 5% to 95%B within 1.3 min
Flow Rate :1.8ml/min
Column :SunFire C18, 4.6*50mm,3.5um A-RP-186
Oven Temperature : 45C

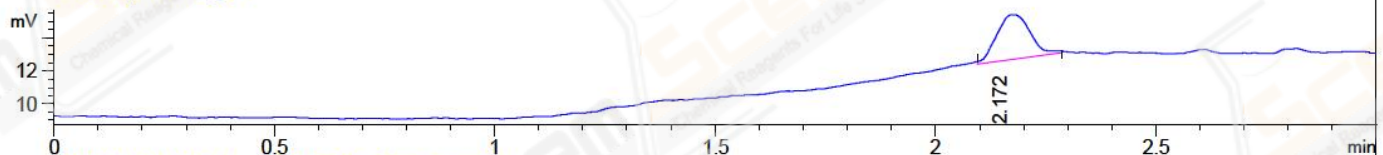
DAD1 A, Sig=214,4 Ref=off



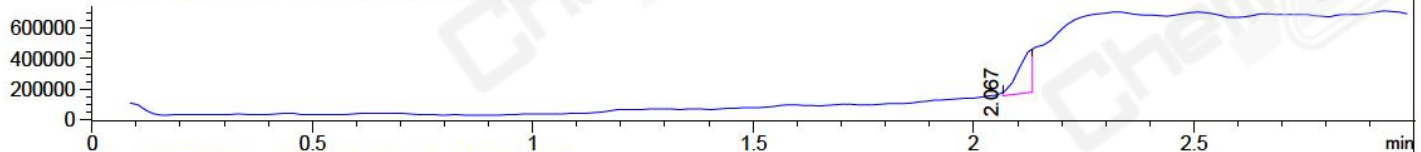
DAD1 B, Sig=254,4 Ref=off



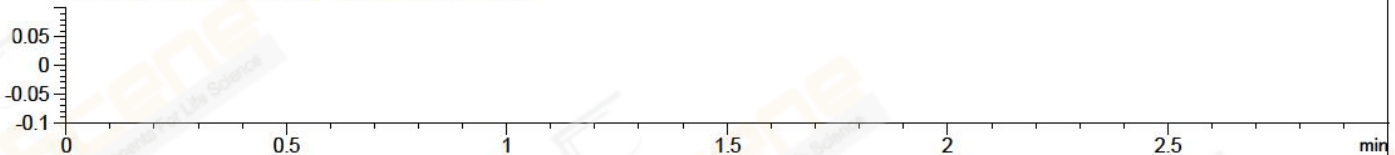
ELS1 A, ELSD Signal



MSD1 TIC, MS File ES-API, Pos, Scan, Frag: 70



Ion 1, MSD1 1, Target Mass 0 +H Positive, EIC=0.7:1.7



Integration Results for DAD1 A, Sig=214,4 Ref=off

RetTim	Width	Area	Height	Area%	MS (+)
1.45	0.03	1.44	0.58	0.25	233
2.00	0.03	2.29	1.38	0.41	233
2.10	0.02	561.52	361.22	99.34	105

Integration Results for DAD1 B, Sig=254,4 Ref=off

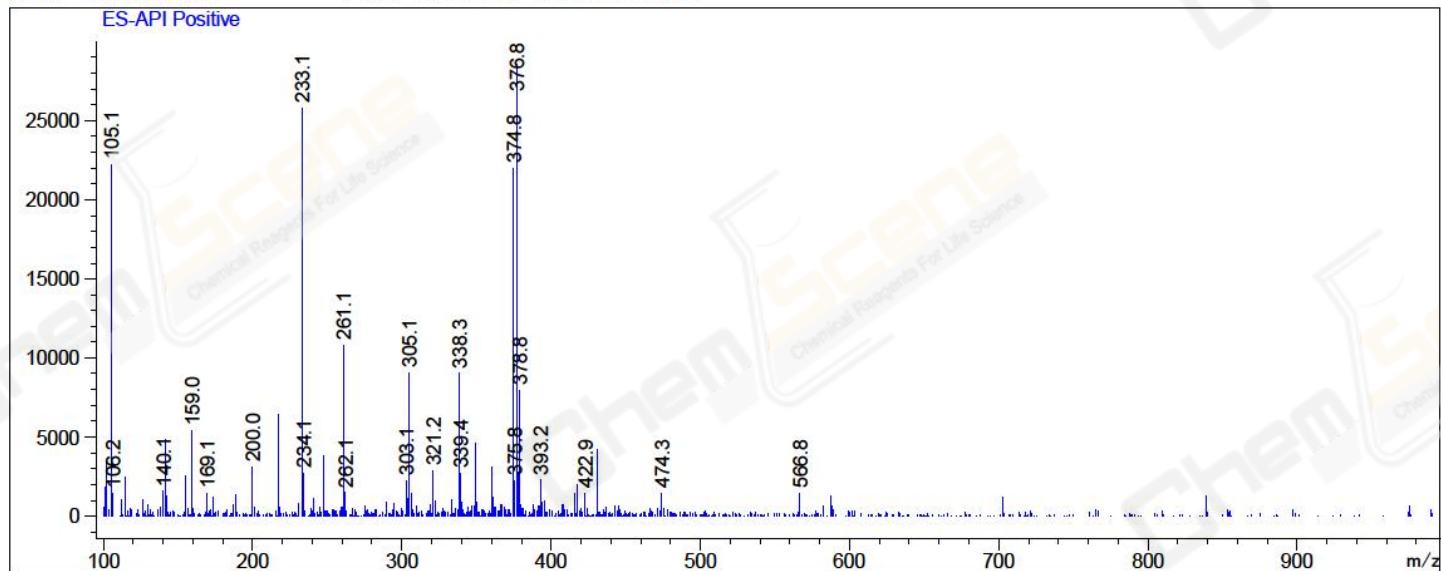
RetTim	Width	Area	Height	Area%	MS (+)
2.00	0.02	0.78	0.71	0.09	233
2.03	0.02	0.33	0.33	0.04	233
2.10	0.02	832.86	534.47	99.87	105

Integration Results for MSD1 TIC, MS File

RetTim	Width	Area	Height	Area%	MS (+)
2.07	0.05	748565.75	19550.42	100.00	377

Ret. Time: 2.07

<<<< POSITIVE SPECTRA >>>>



*** End of Report ***