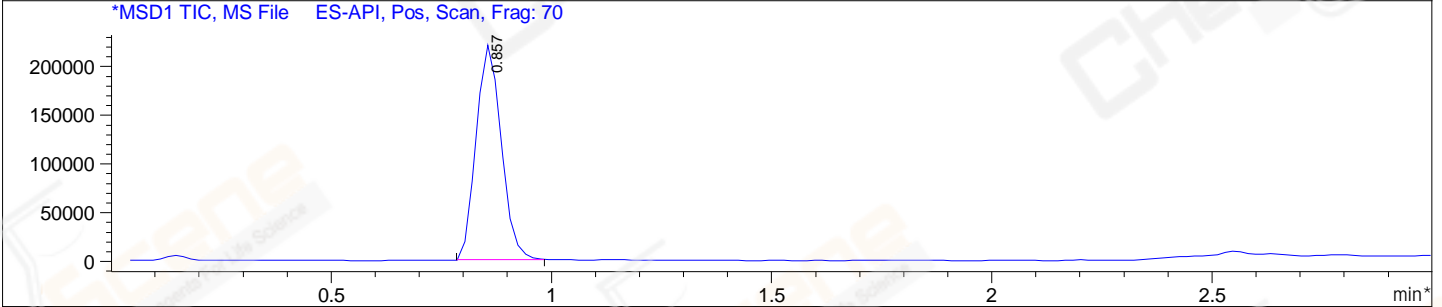
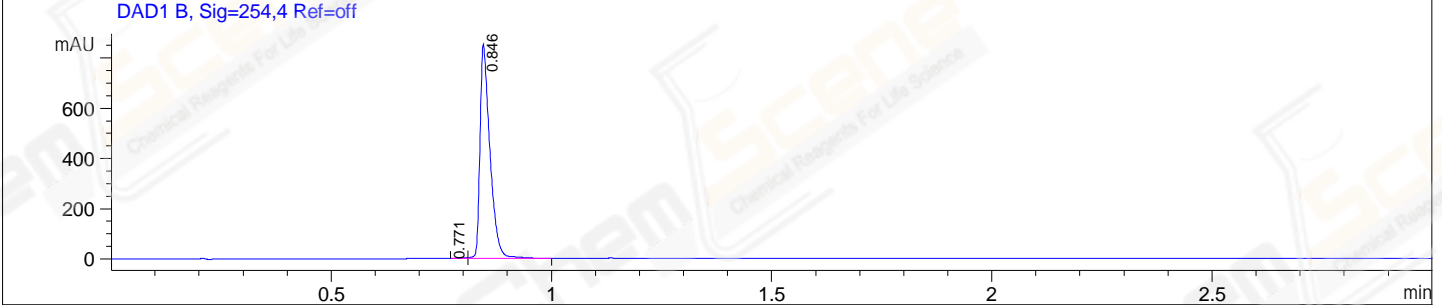
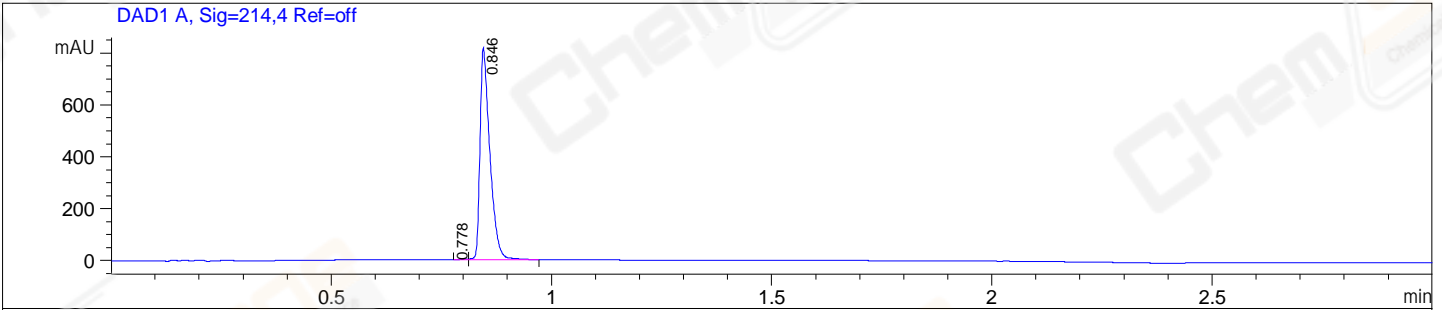


File E:\ChemStation\1\DATA\2023\2023-07\2023-07-07\BIZ2023-707-SCH6-UPLC-MS-10-007444.D
 Injection Date : 07-Jul-23, 18:20:19 Tgt Mass(EZX) :
 Sample Name : BIZ2023-707-SCH6 Location : P2-F-01
 Acq. Operator : LY_2278 Inj : 1
 Spec. Reported : MS Integration Inj Volume : 1 ul
 Acq. Method : E:\ChemStation\1\Methods\1-POS-UPLC3.0MIN(1.2)(150-1000).M
 Analysis Method : E:\CHEMSTATION\1\METHODS\1-POS-UPLC3.0MIN(1.2)(150-1000).M
 CAS NO. : 13614-98-7 WalkUp method: '1-POS-3MIN' Project: BIZ2023
 Method Info : Mobile Phase: A: water(0.01%TFA) B:ACN(0.01%TFA)
 Gradient: 5% to 95%B within 2.0 min
 Flow Rate :1.2ml/min
 Column :Shim-pack Scepter C18-120, 3.0*33mm,3um
 Oven Temperature : 45C



Integration Results for DAD1 A, Sig=214,4 Ref=off

RetTim	Width	Area	Height	Area%
0.78	0.02	4.06	0.05	0.32
0.85	0.03	1273.10	816.56	99.68

Integration Results for DAD1 B, Sig=254,4 Ref=off

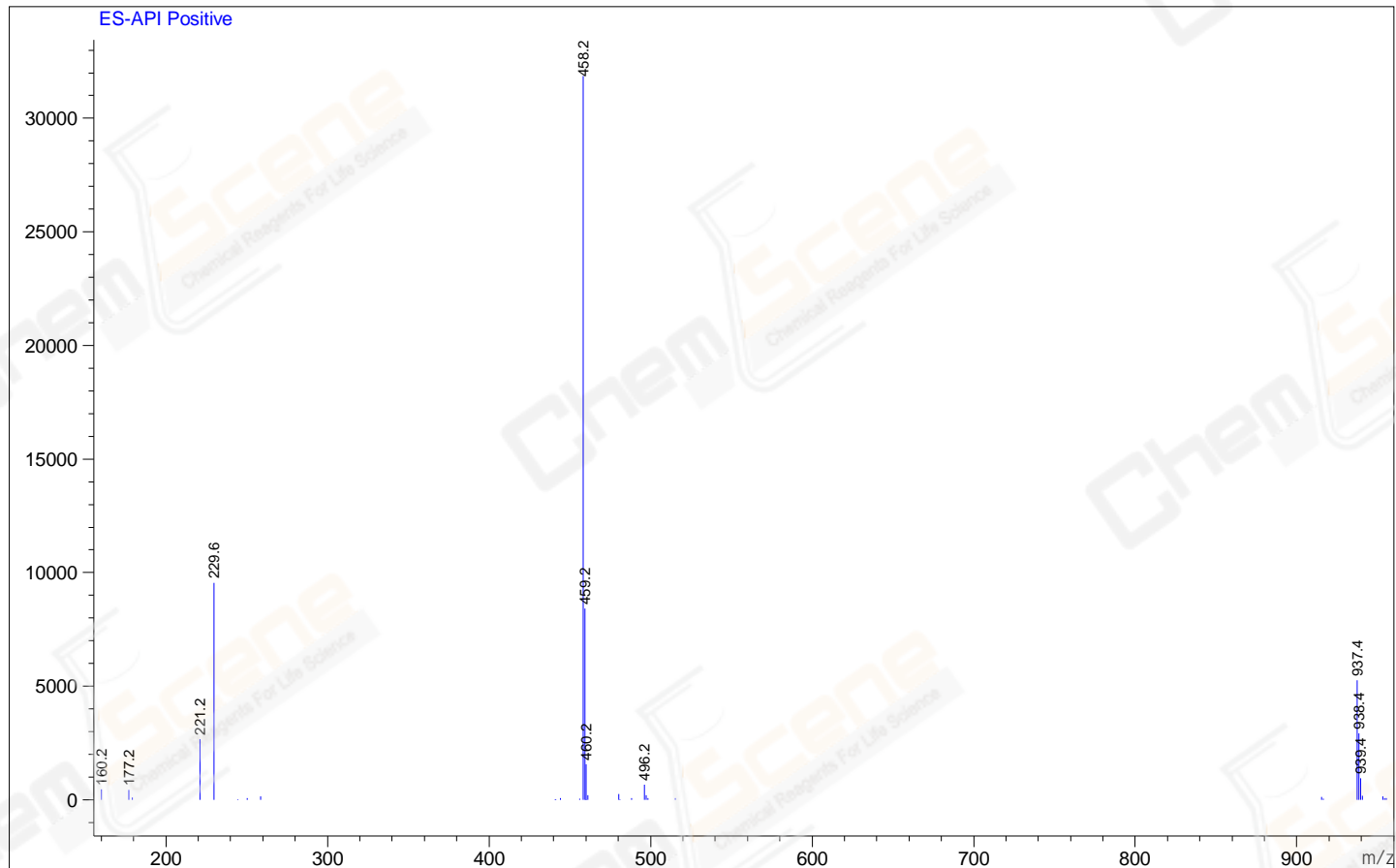
RetTim	Width	Area	Height	Area%
0.77	0.02	3.73	0.01	0.28
0.85	0.03	1339.96	853.15	99.72

Integration Results for MSD1 TIC, MS File

RetTim	Width	Area	Height	Area%
0.86	0.07	878638.94	223837.75	100.00

Ret. Time: 0.86

<<<< POSITIVE SPECTRA >>>>



*** End of Report ***