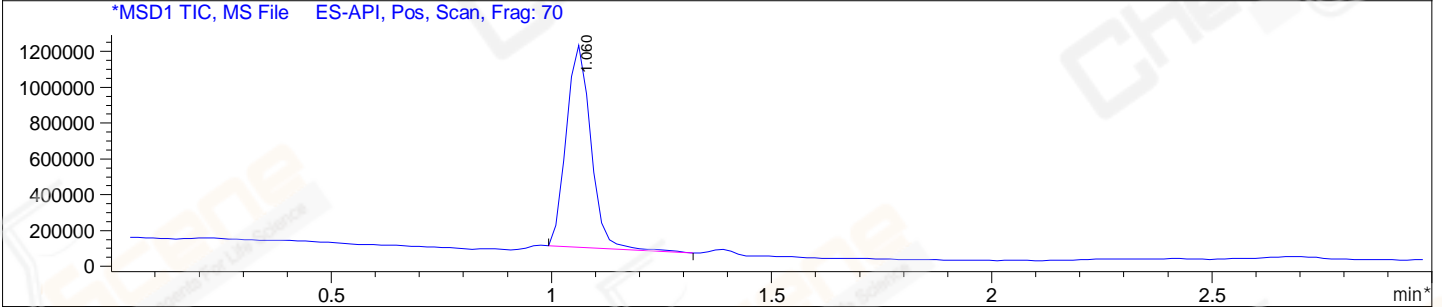
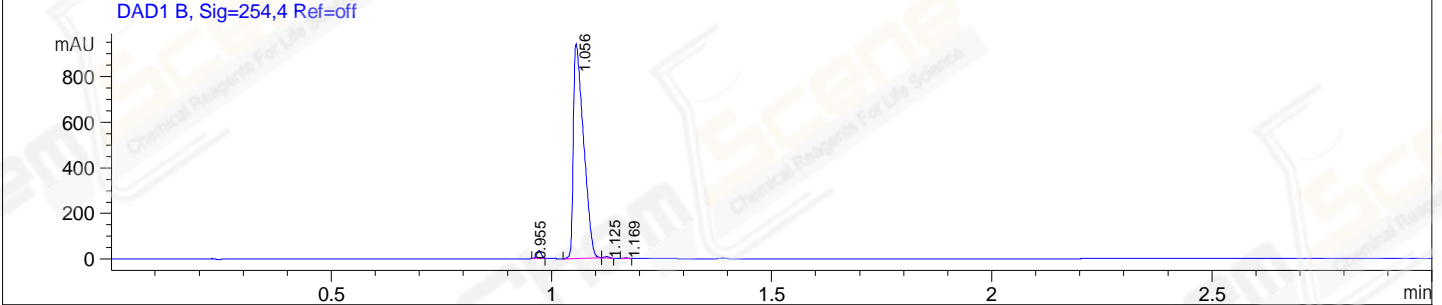
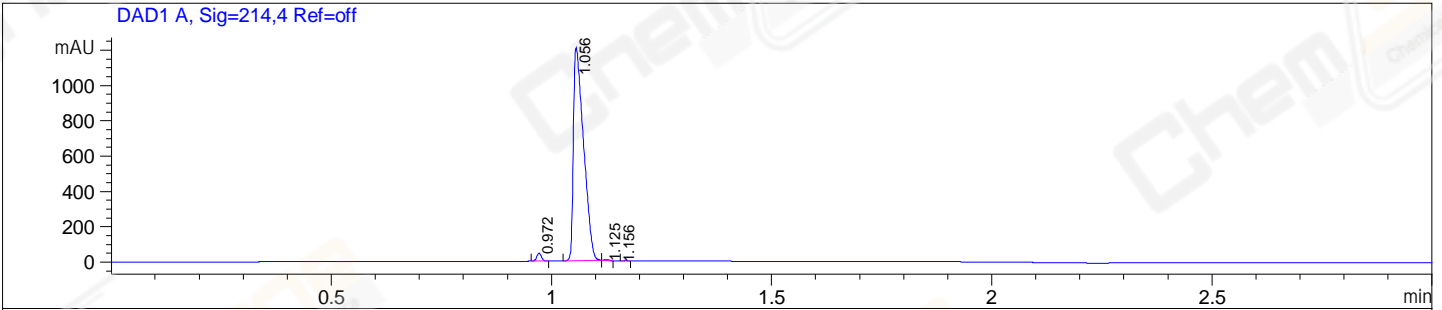


File E:\ChemStation\1\DATA\2024\2024-05\2024-05-10\CPK2024-510-27683-UPLC-MS-10-033185.D  
 Injection Date : 10-May-24, 18:40:48 Tgt Mass(EZX) :  
 Sample Name : CPK2024-510-27683 Location : P2-E-07  
 Acq. Operator : LY\_2278 Inj : 1  
 Spec. Reported : MS Integration Inj Volume : 0.8 ul  
 Acq. Method : E:\ChemStation\1\Methods\1-POS-UPLC3.0MIN(1.2)(150-1000).M  
 Analysis Method : E:\CHEMSTATION\1\METHODS\1-POS-UPLC3.0MIN(1.2)(150-1000).M  
 CAS NO. : 62669-70-9 WalkUp method: '1-POS-3MIN' Project: CPK2024  
 Method Info : Mobile Phase: A: water(0.01%TFA) B:ACN(0.01%TFA)  
 Gradient: 5% to 95%B within 2.0 min  
 Flow Rate :1.2ml/min  
 Column :Shim-pack Scepter C18-120, 3.0\*33mm,3um  
 Oven Temperature : 45C



Integration Results for DAD1 A, Sig=214,4 Ref=off

RetTim	Width	Area	Height	Area%
0.97	0.01	33.54	45.35	1.70
1.06	0.02	1932.06	1207.59	98.03
1.13	0.01	3.81	5.44	0.19
1.16	0.01	1.54	0.05	0.08

Integration Results for DAD1 B, Sig=254,4 Ref=off

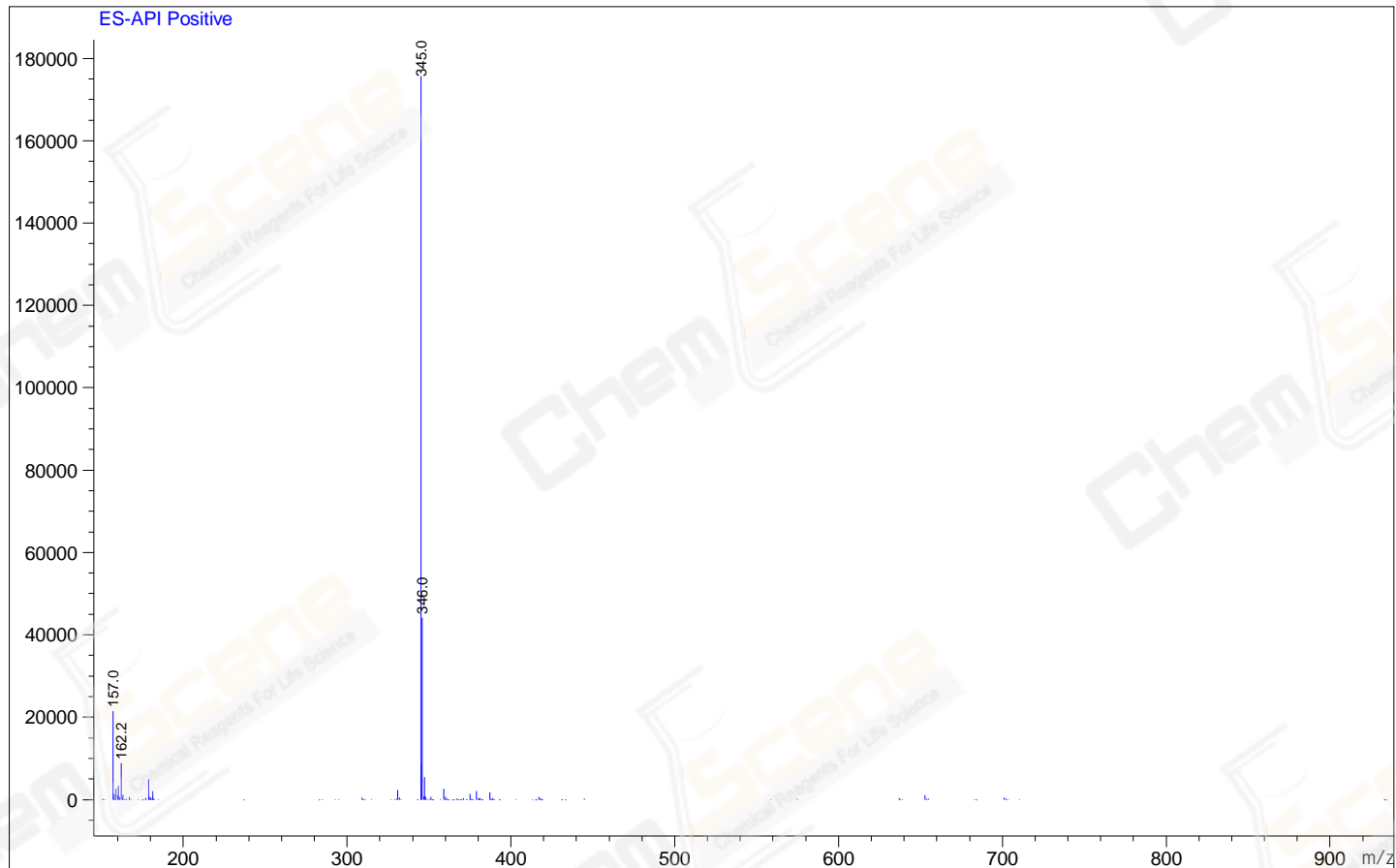
RetTim	Width	Area	Height	Area%
0.96	0.01	24.21	-0.29	1.57
1.06	0.02	1511.07	940.27	98.05
1.13	0.01	4.17	5.84	0.27
1.17	0.01	1.67	2.38	0.11

Integration Results for MSD1 TIC, MS File

RetTim	Width	Area	Height	Area%
1.06	0.06	4423899.00	1130262.00	100.00

Ret. Time: 1.06

<<<< POSITIVE SPECTRA >>>>



\*\*\* End of Report \*\*\*