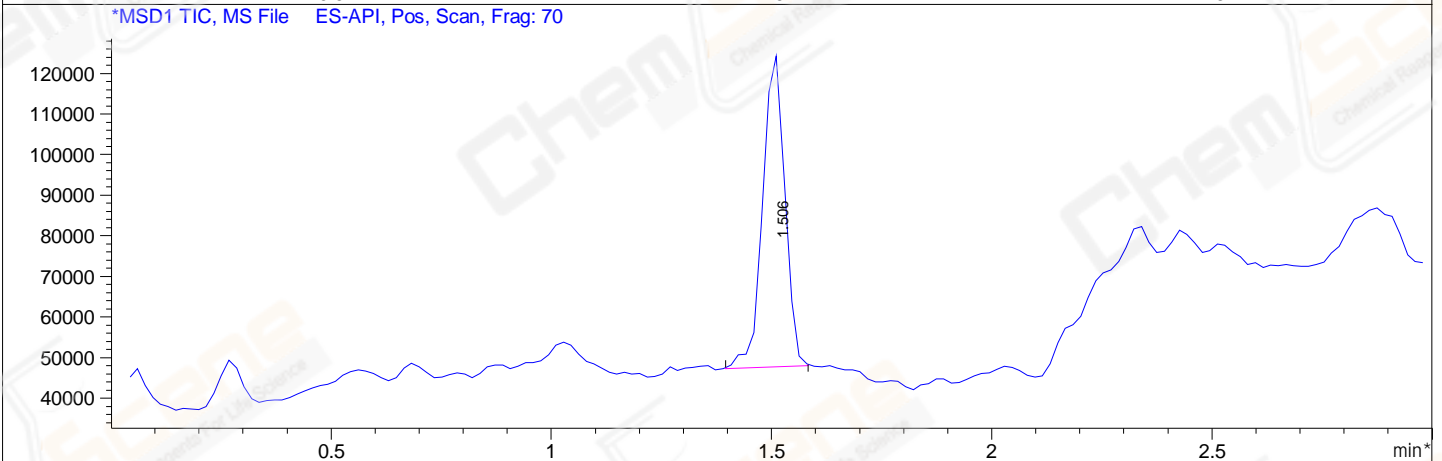
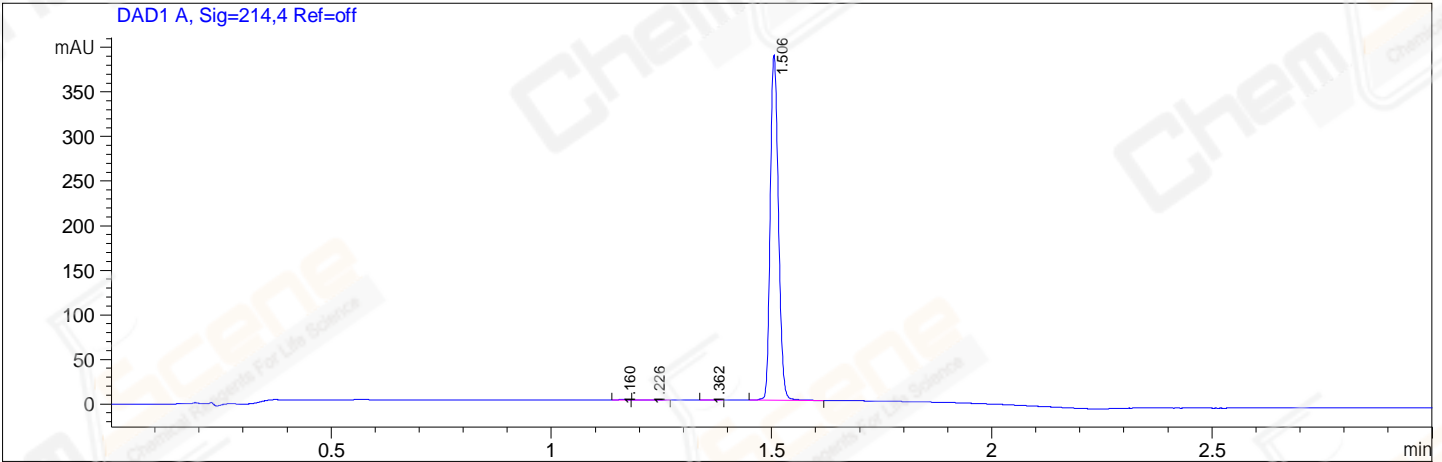


File E:\ChemStation\1\DATA\2023\2023-11\2023-11-08\CPK2023-N08-27706-UPLC-MS-10-019094.D
 Injection Date : 08-Nov-23, 18:41:05 Tgt Mass(EZX) :
 Sample Name : CPK2023-N08-27706 Location : P2-C-05
 Acq. Operator : LY_2278 Inj : 1
 Spec. Reported : MS Integration Inj Volume : 0.8 ul
 Acq. Method : E:\ChemStation\1\Methods\1-POS-UPLC3.0MIN(1.2)(150-1000).M
 Analysis Method : E:\CHEMSTATION\1\METHODS\1-POS-UPLC3.0MIN(1.2)(150-1000).M
 CAS NO. : 103337-74-2 WalkUp method: '1-POS-3MIN' Project: CPK2023
 Method Info : Mobile Phase: A: water(0.01%TFA) B:ACN(0.01%TFA)
 Gradient: 5% to 95%B within 2.0 min
 Flow Rate :1.2ml/min
 Column :Shim-pack Scepter C18-120, 3.0*33mm,3um
 Oven Temperature : 45C



Integration Results for DAD1 A, Sig=214,4 Ref=off

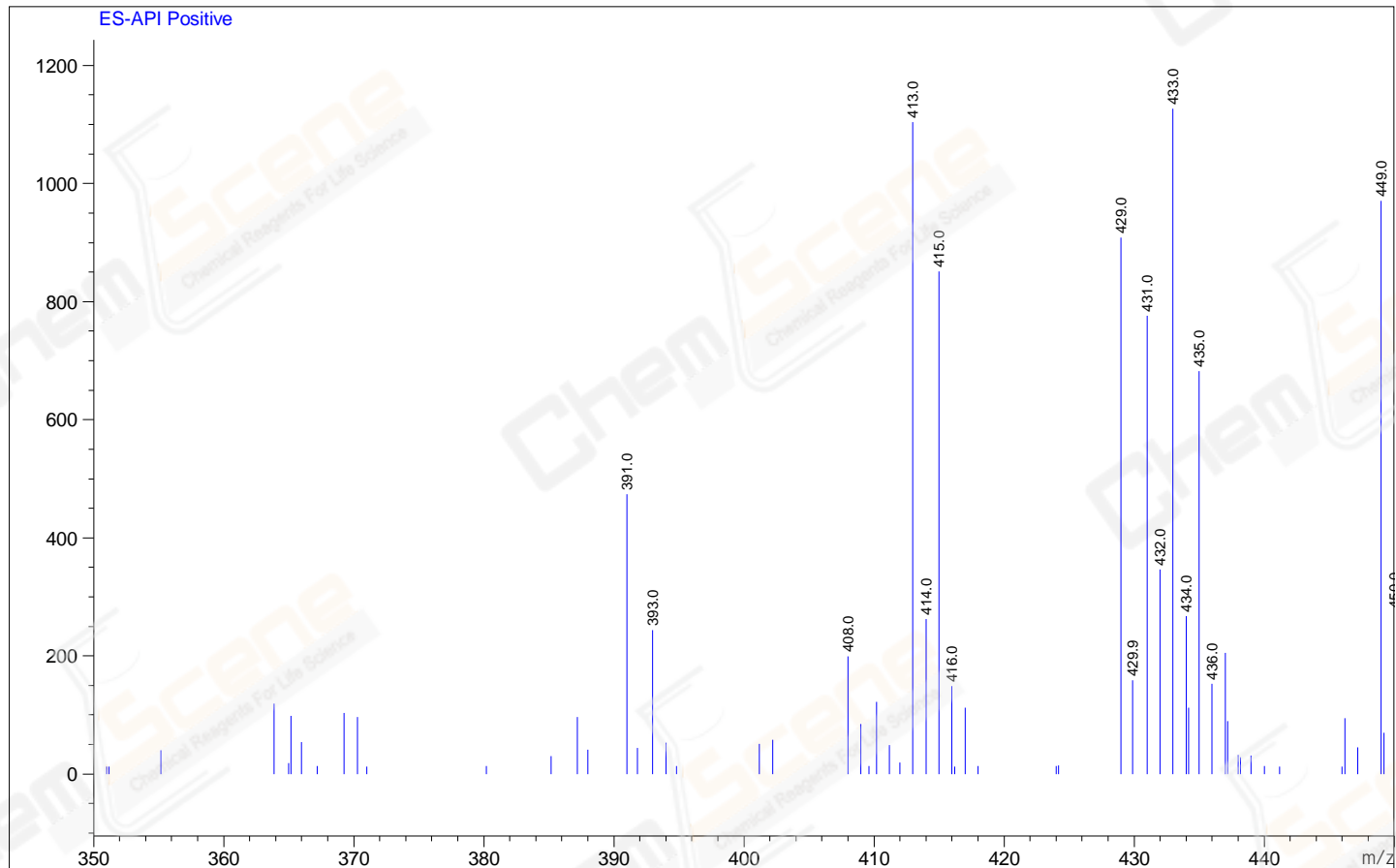
RetTim	Width	Area	Height	Area%
1.16	0.02	0.73	0.60	0.15
1.23	0.03	0.74	0.36	0.15
1.36	0.02	0.36	0.27	0.07
1.51	0.02	501.59	386.83	99.63

Integration Results for MSD1 TIC, MS File

RetTim	Width	Area	Height	Area%
1.51	0.06	269217.59	79491.30	100.00

Ret. Time: 1.51

<<<< POSITIVE SPECTRA >>>>



*** End of Report ***