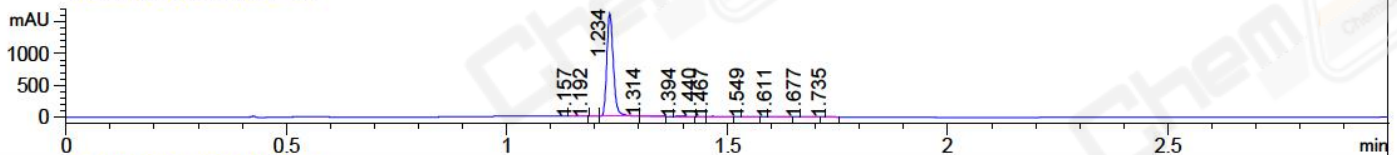
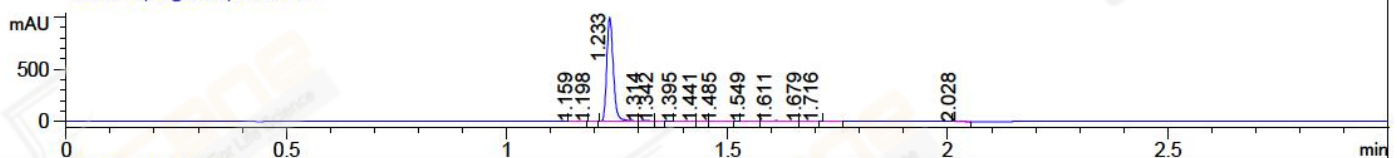


File ..\Data\20171218\20171218-1\BIZ2017-D18-XT2.D Tgt Mass (CHM):
 Injection Date : 18 Dec 17 3:39 pm +0800 Seq. Line : 61
 Sample Name : BIZ2017-D18-XT2 Location : P1-F-07
 Acq. Operator : ZLJ_587 Inj : 1
 Spec. Reported : MS Integration Inj Volume : 2 ul
 Acq. Method : D:\LCMS03\Data\20171218\20171218-1\1-POS-3MIN.M
 Analysis Method : D:\LCMS03\Data\20171218\20171218-1\1-POS-3MIN.M
 Catalog No : CS-0032273 Batch#27795
 Method Info : Mobile Phase: A: water(0.01%TFA) B:ACN(0.01%TFA)
 Gradient: 5% to 95%B within 1.3 min
 Flow Rate :1.8ml/min
 Column :SunFire C18, 4.6*50mm,3.5um A-RP-186
 Oven Temperature : 45C

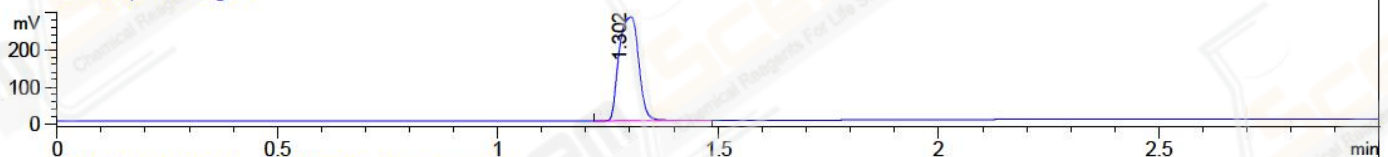
DAD1 A, Sig=214,4 Ref=off



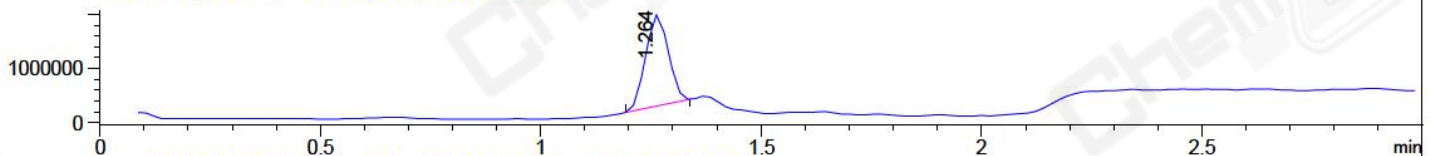
DAD1 B, Sig=254,4 Ref=off



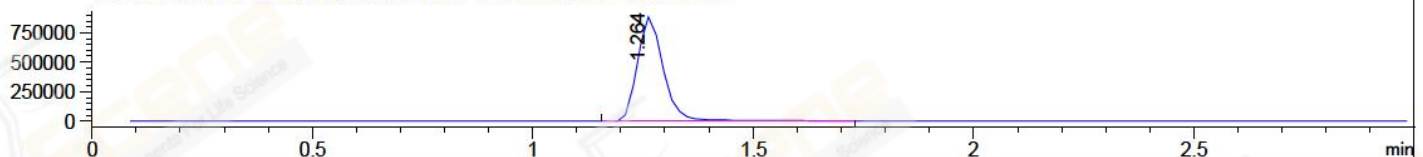
ELS1 A, ELSD Signal



MSD1 TIC, MS File ES-API, Pos, Scan, Frag: 70



Ion 418.1, MSD1 418.1, Target Mass 417.1 +H Positive, EIC=417.8:418.8



Integration Results for DAD1 A, Sig=214,4 Ref=off

RetTim	Width	Area	Height	Area%	MS (+)
1.16	0.02	1.56	1.31	0.09	174
1.19	0.01	0.17	0.19	0.01	418
1.23	0.02	1655.24	1602.63	98.44	418
1.31	0.02	6.78	6.04	0.40	418
1.39	0.02	3.95	3.43	0.23	702
1.44	0.01	0.65	0.91	0.04	174
1.47	0.02	4.26	2.68	0.25	326
1.55	0.02	2.02	1.92	0.12	174
1.61	0.02	3.75	3.19	0.22	534
1.68	0.02	0.75	0.60	0.04	233
1.73	0.02	2.36	2.23	0.14	233

Integration Results for DAD1 B, Sig=254,4 Ref=off

RetTim	Width	Area	Height	Area%	MS (+)
1.16	0.02	1.12	0.92	0.11	174
1.20	0.01	0.10	0.11	0.01	174
1.23	0.02	1024.93	988.85	98.46	418

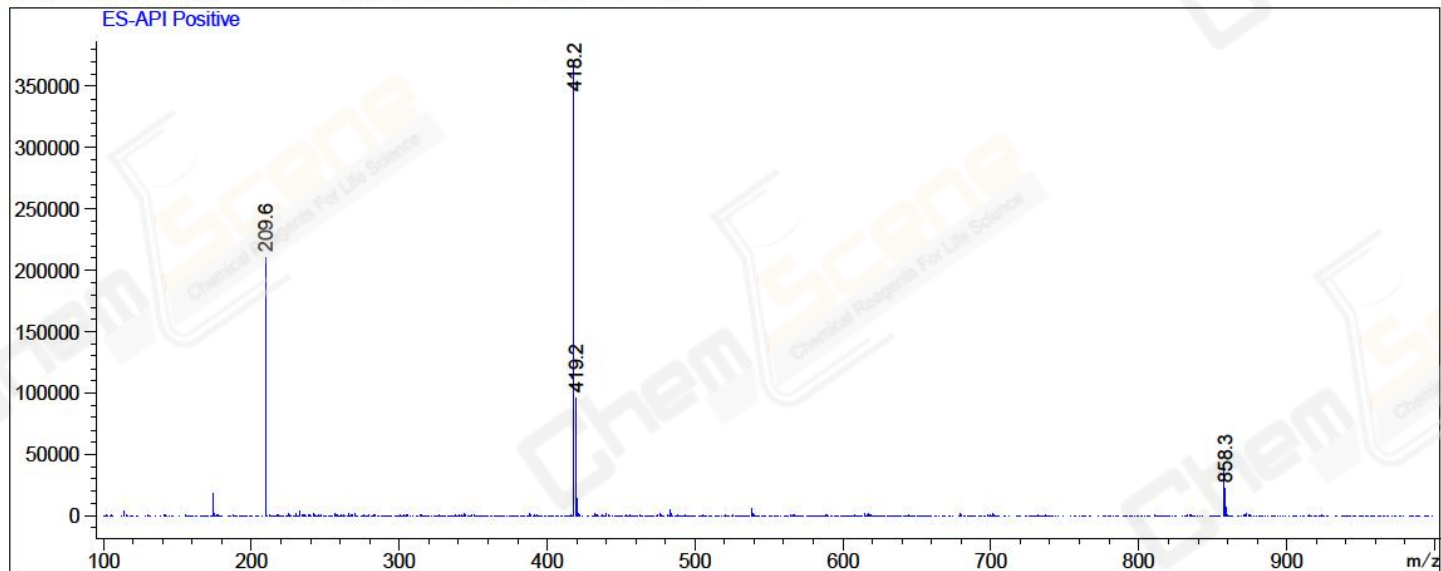
1.31	0.02	4.12	4.24	0.40	418
1.34	0.01	0.22	0.29	0.02	418
1.40	0.02	1.74	1.51	0.17	702
1.44	0.01	0.53	0.66	0.05	174
1.49	0.02	0.39	0.24	0.04	326
1.55	0.02	1.53	1.43	0.15	174
1.61	0.02	3.39	2.59	0.33	233
1.68	0.02	0.64	0.50	0.06	233
1.72	0.02	1.50	0.22	0.14	233
2.03	0.02	0.81	0.77	0.08	233

Integration Results for MSD1 TIC, MS File

RetTim	Width	Area	Height	Area%	MS (+)
1.26	0.06	6063063.00	1675815.75	100.00	418

Ret. Time: 1.26

<<<< POSITIVE SPECTRA >>>>



*** End of Report ***