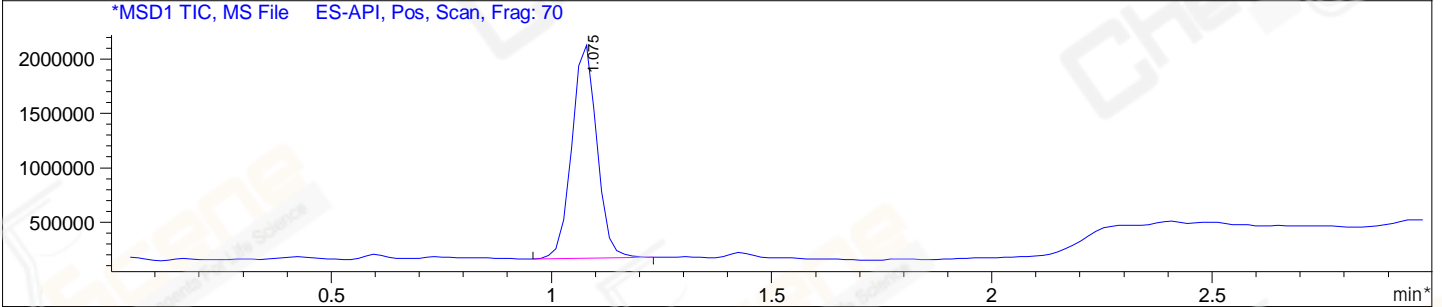
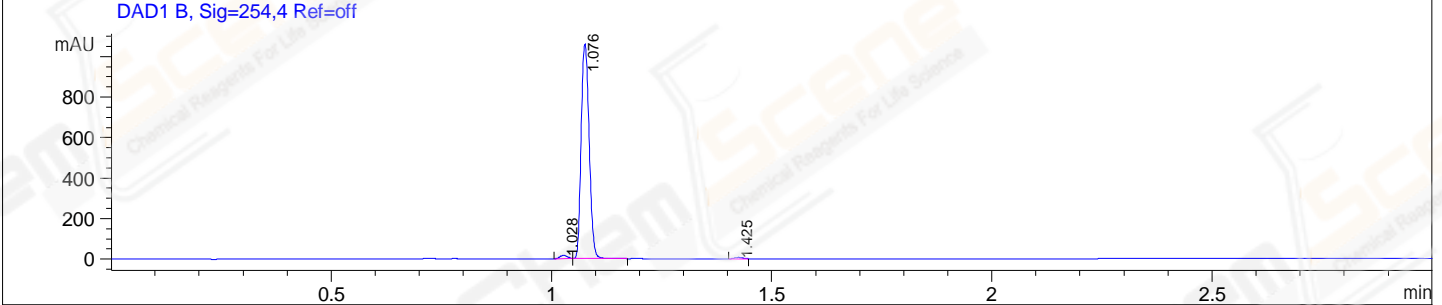
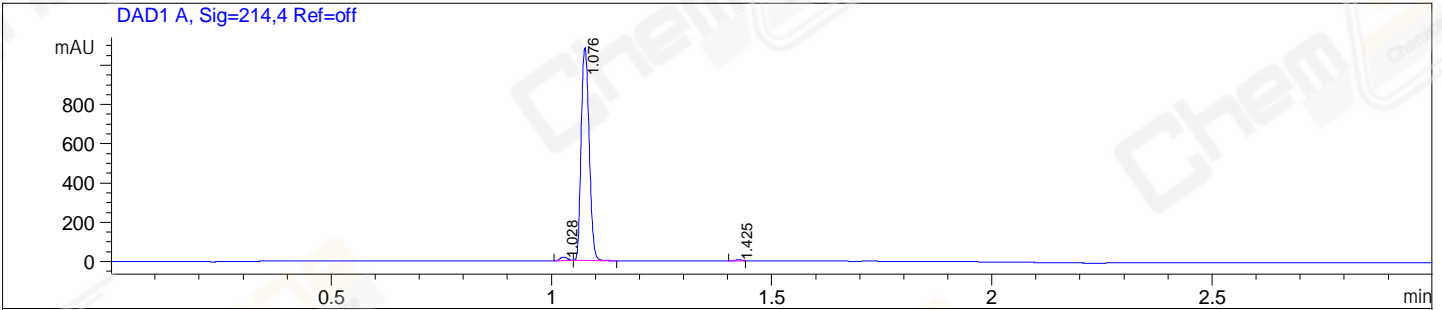


File E:\ChemStation\1\DATA\2023\2023-08\2023-08-18\CPK2023-818-27868-UPLC-MS-10-010998.D  
 Injection Date : 18-Aug-23, 17:55:30 Tgt Mass(EZX) :  
 Sample Name : CPK2023-818-27868 Location : P1-F-01  
 Acq. Operator : LY\_2278 Inj : 1  
 Spec. Reported : MS Integration Inj Volume : 0.5 ul  
 Acq. Method : E:\ChemStation\1\Methods\1-POS-UPLC3.0MIN(1.2)(150-1000).M  
 Analysis Method : E:\CHEMSTATION\1\METHODS\1-POS-UPLC3.0MIN(1.2)(150-1000).M  
 CAS NO. : 1883510-31-3 WalkUp method: '1-POS-3MIN' Project: CPK2023  
 Method Info : Mobile Phase: A: water(0.01%TFA) B:ACN(0.01%TFA)  
 Gradient: 5% to 95%B within 2.0 min  
 Flow Rate :1.2ml/min  
 Column :Shim-pack Scepter C18-120, 3.0\*33mm,3um  
 Oven Temperature : 45C



Integration Results for DAD1 A, Sig=214,4 Ref=off

RetTim	Width	Area	Height	Area%
1.03	0.02	21.07	18.08	1.50
1.08	0.02	1374.05	1082.62	98.06
1.42	0.02	6.18	5.21	0.44

Integration Results for DAD1 B, Sig=254,4 Ref=off

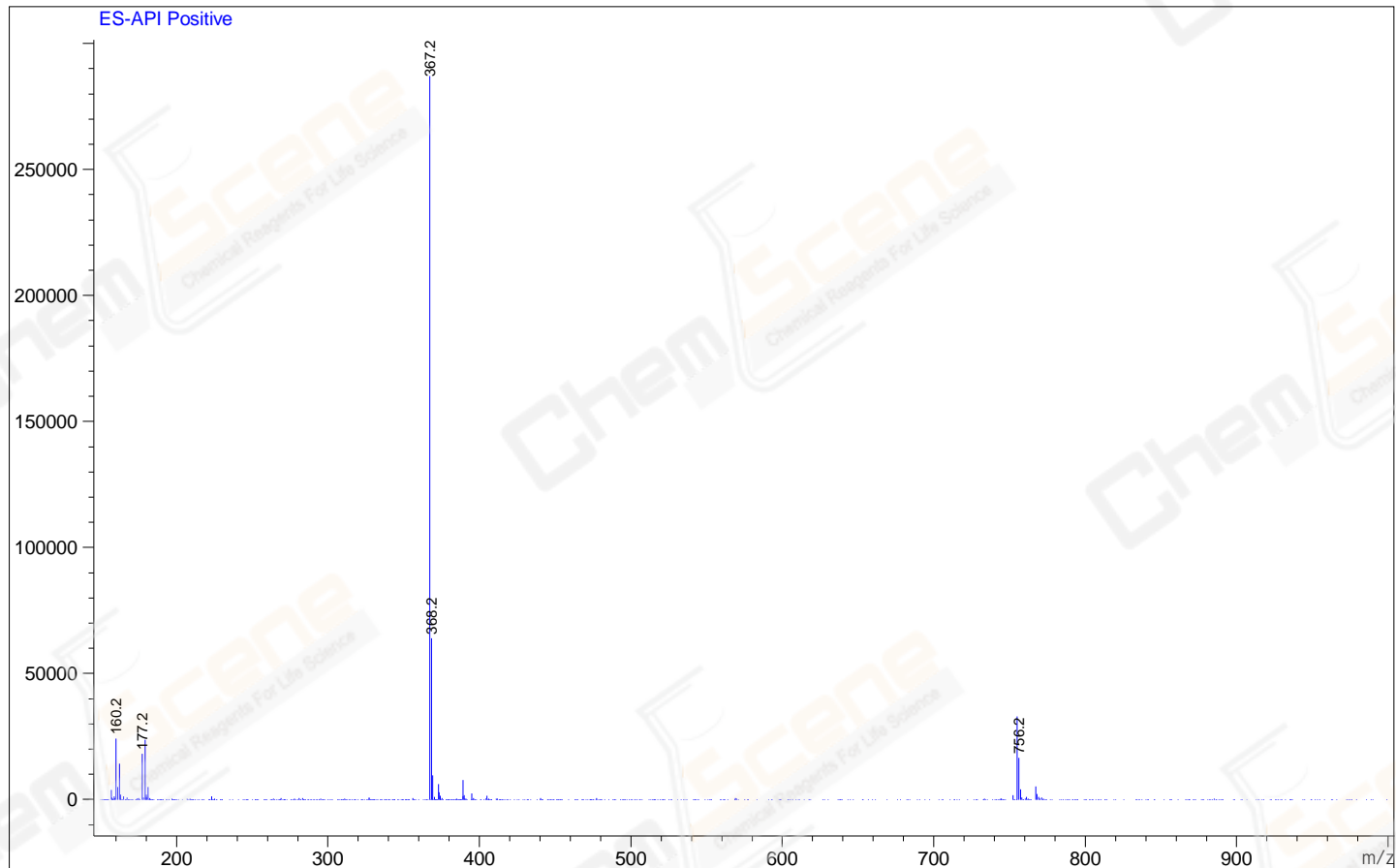
RetTim	Width	Area	Height	Area%
1.03	0.02	18.41	15.81	1.35
1.08	0.02	1334.01	1057.19	98.04
1.42	0.02	8.23	6.40	0.60

Integration Results for MSD1 TIC, MS File

RetTim	Width	Area	Height	Area%
1.08	0.06	7798742.50	1987312.00	100.00

Ret. Time: 1.08

<<<< POSITIVE SPECTRA >>>>



\*\*\* End of Report \*\*\*