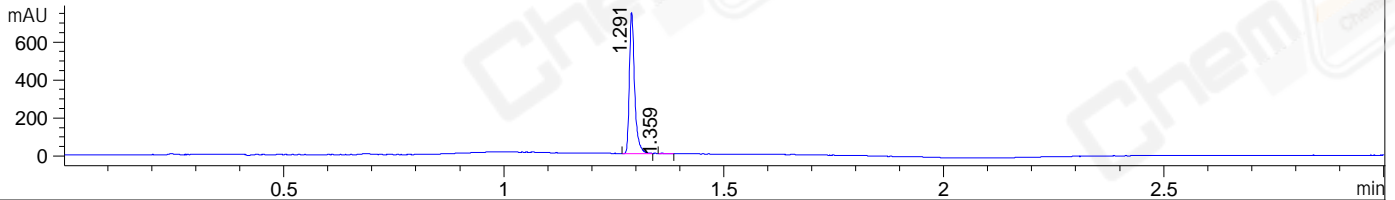
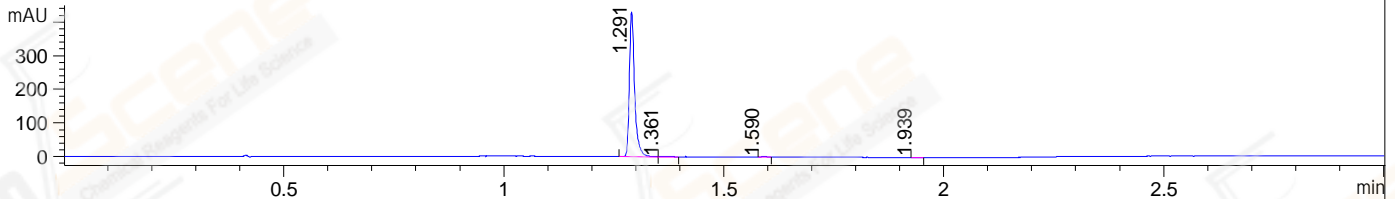


File ..TA\2020\20200709\1028 1\CPK2020-708-27942.D Tgt Mass (CHM):
Injection Date : 10 Jul 20 2:48 am +0800 Seq. Line : 43
Sample Name : CPK2020-708-27942 Location : P1-E-02
Acq. Operator : ZJ_1432 Inj : 1
Spec. Reported : MS Integration Inj Volume : 0.5 ul
Acq. Method : D:\Chem32\1\data\2020\20200709\1028 1\1-POS-3MIN.M
Analysis Method : D:\CHEM32\1\DATA\2020\20200709\1028 1\1-POS-3MIN.M
CAS NO. : 924416-43-3
Method Info : Mobile Phase: A: water(0.01%TFA) B:ACN(0.01%TFA)
Gradient: 5% to 95%B within 1.3 min
Flow Rate :1.8ml/min
Column :SunFire C18, 4.6*50mm,3.5um A-RP-607
Oven Temperature : 45□

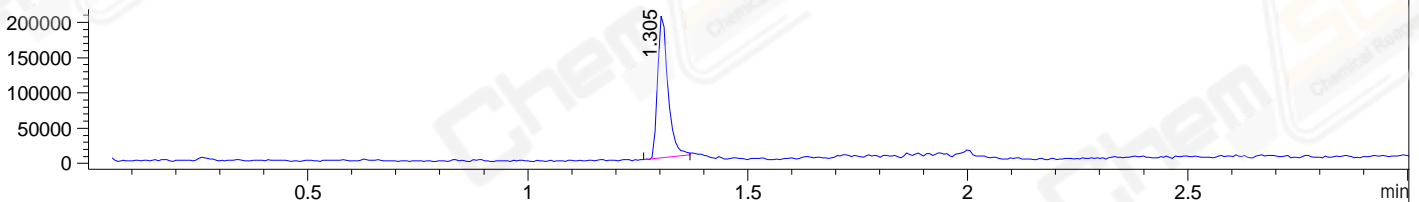
DAD1 B, Sig=214,4 Ref=off



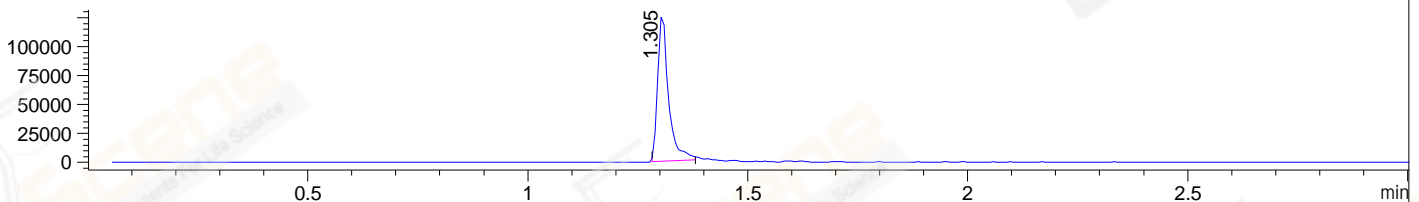
DAD1 C, Sig=254,4 Ref=off



MSD1 TIC, MS File ES-API, Pos, Scan, Frag: 70



Ion 429, MSD1 429, Target Mass 428 +H Positive, EIC=428.7:429.7



Integration Results for DAD1 B, Sig=214,4 Ref=off

RetTim	Width	Area	Height	Area%	MS (+)
1.29	0.01	613.59	743.83	99.64	429
1.36	0.02	2.21	1.86	0.36	429

Integration Results for DAD1 C, Sig=254,4 Ref=off

RetTim	Width	Area	Height	Area%	MS (+)
1.29	0.01	355.58	430.01	99.21	429
1.36	0.02	1.60	1.14	0.45	429
1.59	0.01	0.73	0.92	0.20	261
1.94	0.01	0.51	0.65	0.14	261

Integration Results for MSD1 TIC, MS File

RetTim	Width	Area	Height	Area%	MS (+)
1.30	0.02	330263.47	205617.70	100.00	429

Ret. Time: 1.30

<<<< POSITIVE SPECTRA >>>>

ES-API Positive

