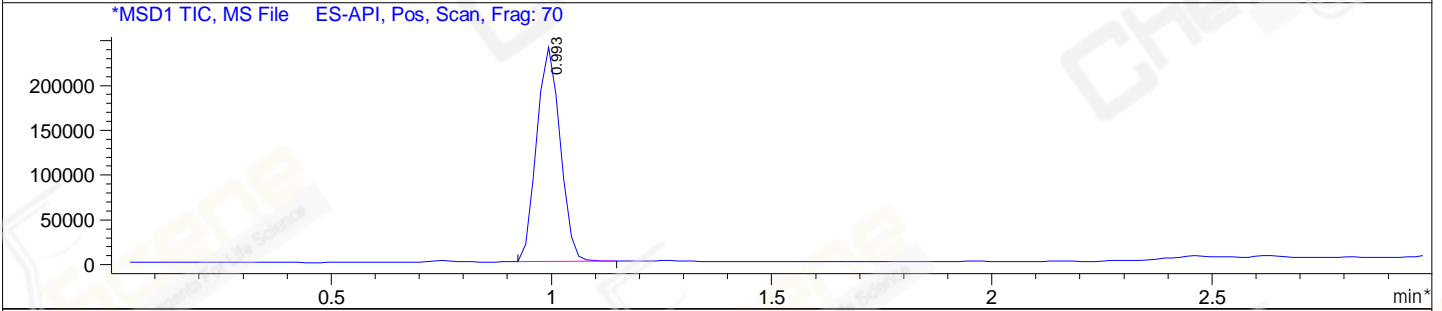
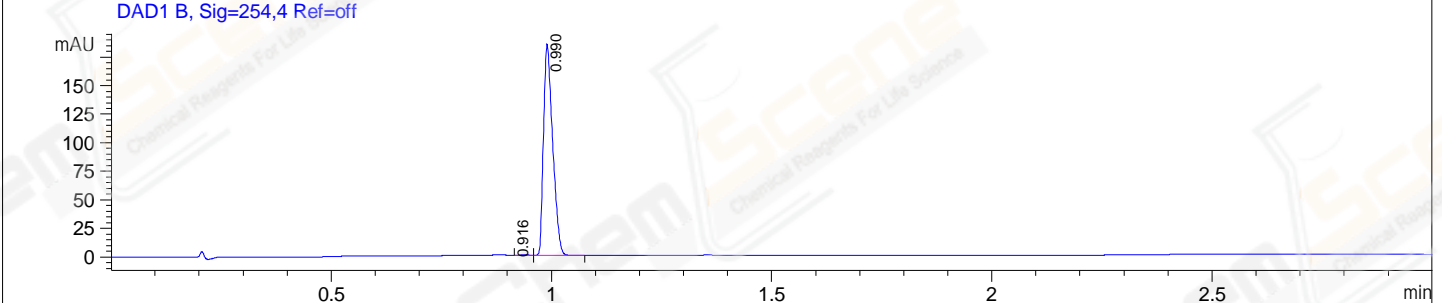
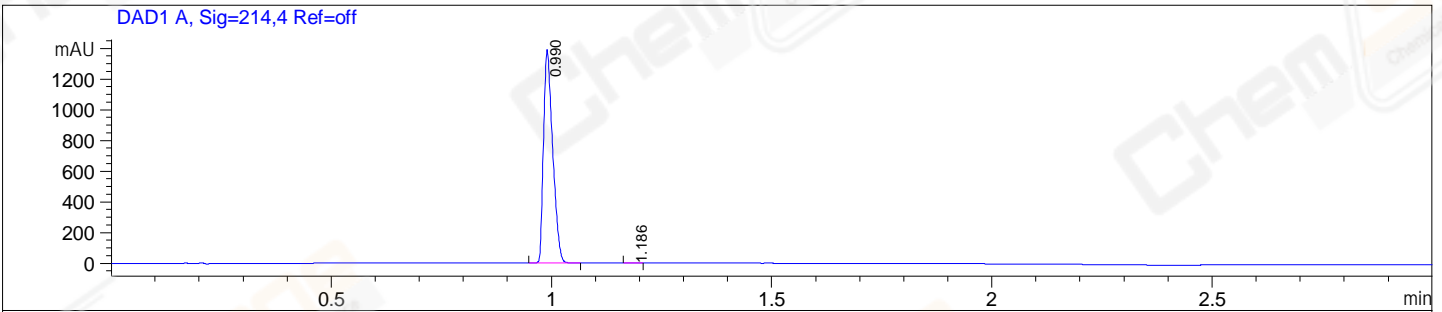


File E:\ChemStation\1\DATA\2023\2023-07\2023-07-25\BIZ2023-725-SCH2-UPLC-MS-10-008883.D
 Injection Date : 25-Jul-23, 14:07:21 Tgt Mass(EZX) :
 Sample Name : BIZ2023-725-SCH2 Location : P1-D-06
 Acq. Operator : LY_2278 Inj : 1
 Spec. Reported : MS Integration Inj Volume : 1 ul
 Acq. Method : E:\ChemStation\1\Methods\1-POS-UPLC3.0MIN(1.2)(150-1000).M
 Analysis Method : E:\CHEMSTATION\1\METHODS\1-POS-UPLC3.0MIN(1.2)(150-1000).M
 CAS NO. : 1310726-60-3 WalkUp method: '1-POS-3MIN' Project: BIZ2023
 Method Info : Mobile Phase: A: water(0.01%TFA) B:ACN(0.01%TFA)
 Gradient: 5% to 95%B within 2.0 min
 Flow Rate :1.2ml/min
 Column :Shim-pack Scepter C18-120, 3.0*33mm,3um
 Oven Temperature : 45C



Integration Results for DAD1 A, Sig=214,4 Ref=off

RetTim	Width	Area	Height	Area%
0.99	0.02	2004.60	1389.63	99.97
1.19	0.02	0.68	0.55	0.03

Integration Results for DAD1 B, Sig=254,4 Ref=off

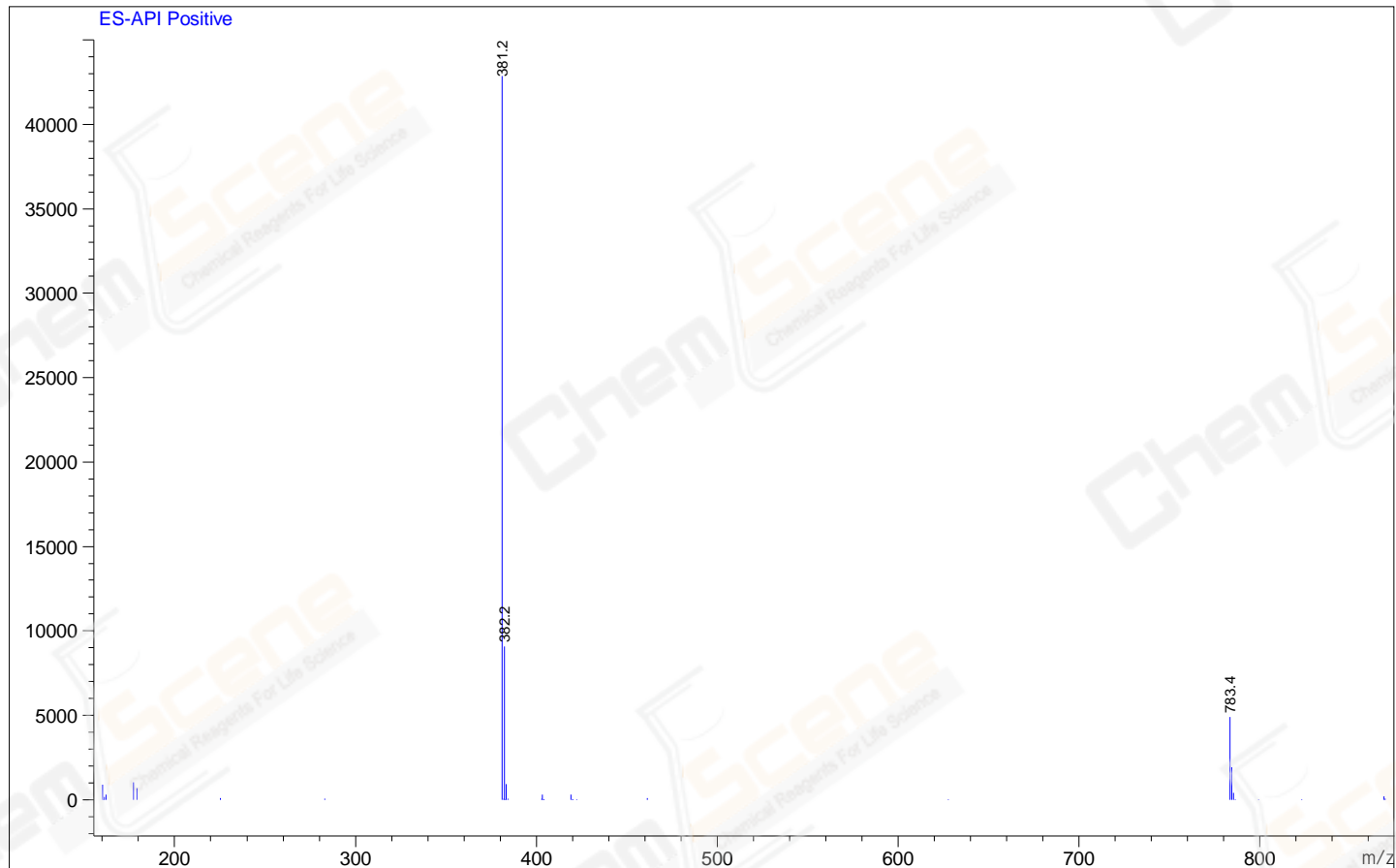
RetTim	Width	Area	Height	Area%
0.92	0.02	0.58	0.00	0.22
0.99	0.02	266.88	184.12	99.78

Integration Results for MSD1 TIC, MS File

RetTim	Width	Area	Height	Area%
0.99	0.06	887598.00	238945.63	100.00

Ret. Time: 0.99

<<<< POSITIVE SPECTRA >>>>



*** End of Report ***