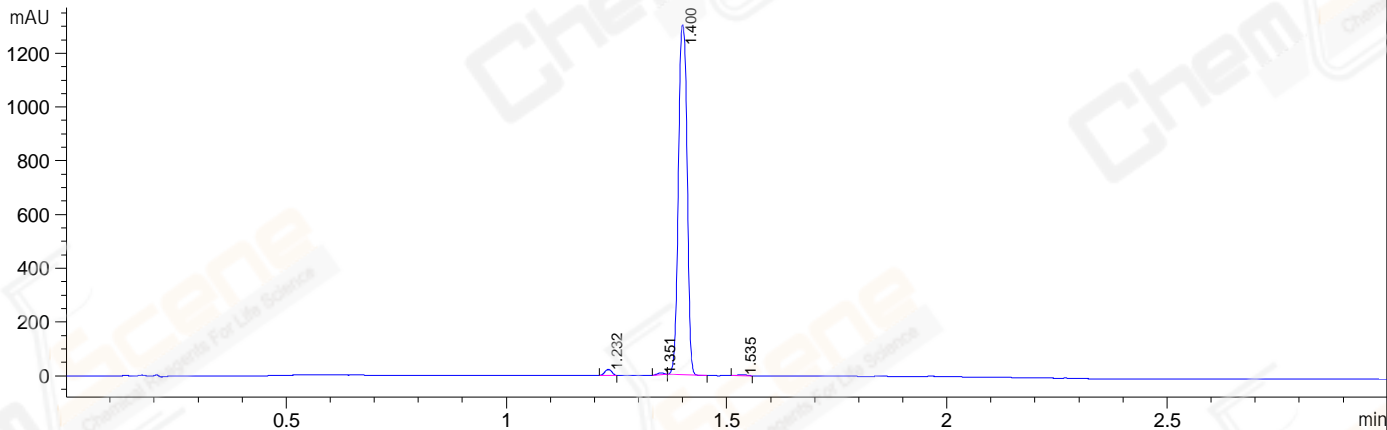
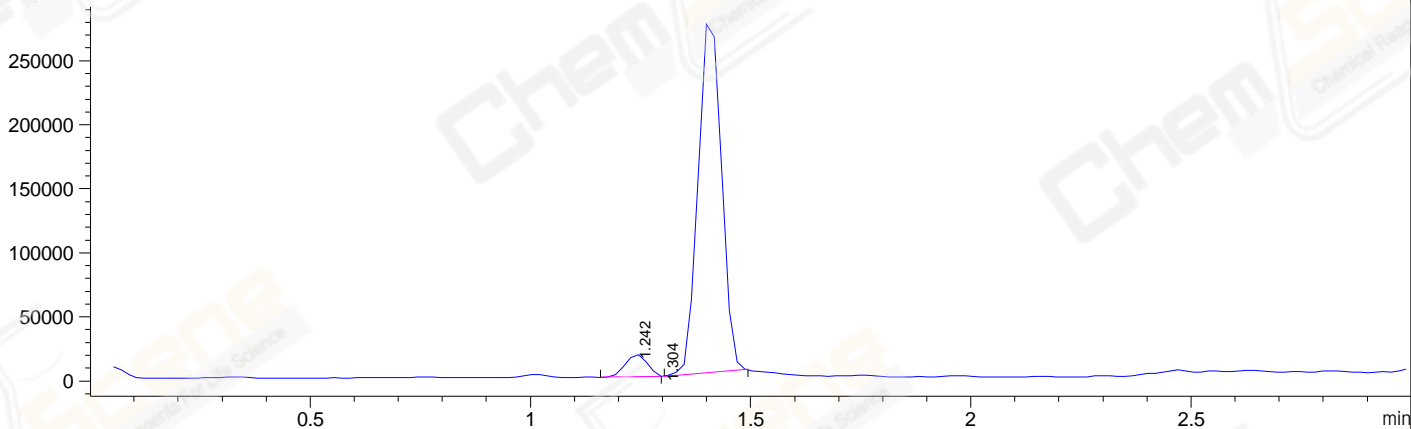


File E:\data\202307\20230727\BIZ2023-726-WLQ41-UPLC-MS-10-009074.D
 Injection Date : 27-Jul-23, 11:34:02 Tgt Mass(EZX) :
 Sample Name : BIZ2023-726-WLQ41 Location : P1-B-05
 Acq. Operator : LY_2278 Inj : 1
 Spec. Reported : MS Integration Inj Volume : 1 ul
 Acq. Method : E:\ChemStation\1\Methods\1-POS-UPLC3.0MIN(1.2)(150-1000).M
 Analysis Method : E:\CHEMSTATION\1\METHODS\1-POS-UPLC3.0MIN(1.2)(150-1000).M
 CAS NO. : 76674-21-0 WalkUp method: '1-POS-3MIN' Project: BIZ2023
 Method Info : Mobile Phase: A: water(0.01%TFA) B:ACN(0.01%TFA)
 Gradient: 5% to 95%B within 2.0 min
 Flow Rate :1.2ml/min
 Column :Shim-pack Scepter C18-120, 3.0*33mm,3um
 Oven Temperature : 45C

DAD1 A, Sig=214,4 Ref=off



MSD1 TIC, MS File ES-API, Pos, Scan, Frag: 70



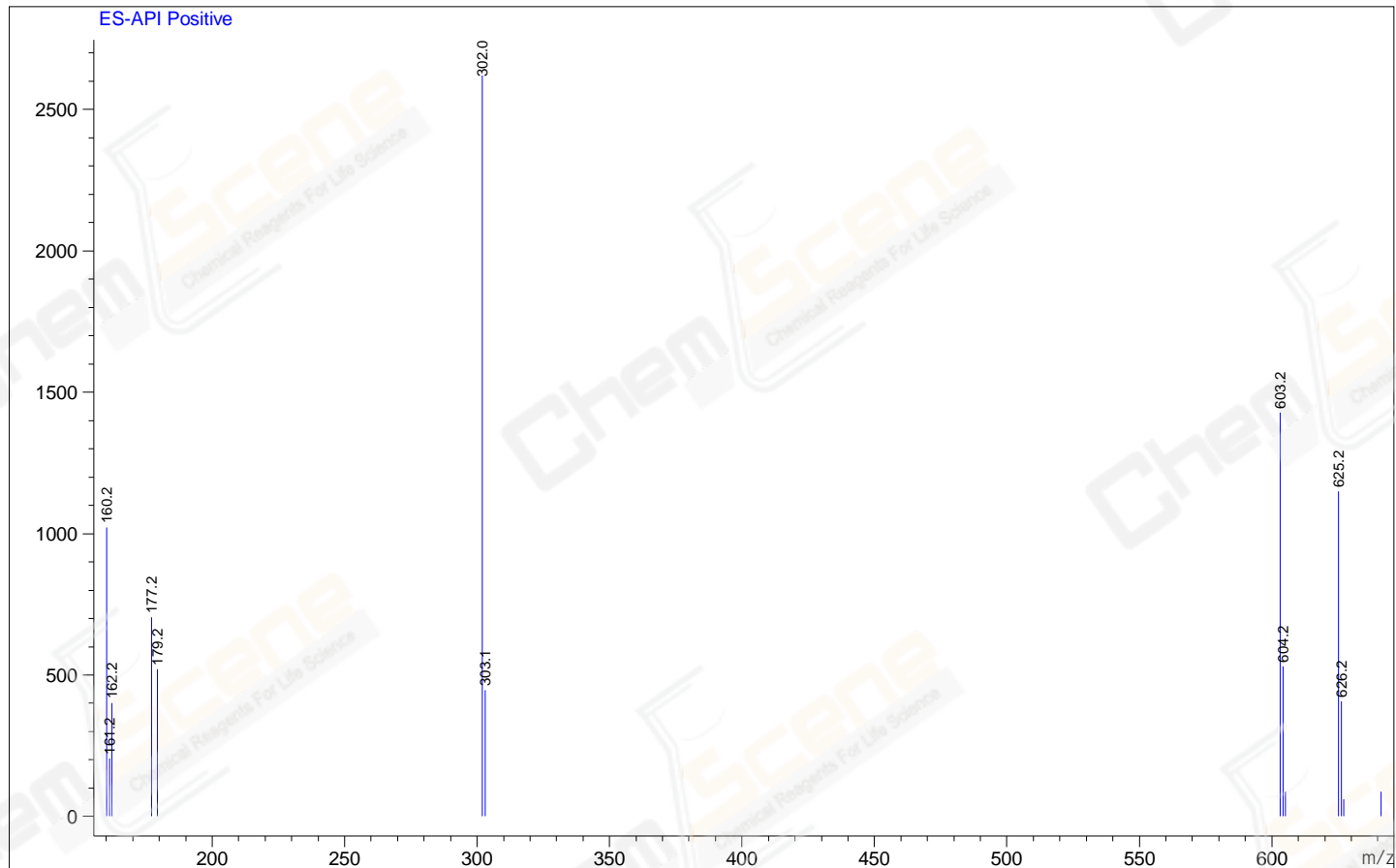
Integration Results for DAD1 A, Sig=214,4 Ref=off

RetTim	Width	Area	Height	Area%
1.23	0.02	23.07	21.11	1.27
1.35	0.02	6.81	6.26	0.37
1.40	0.02	1785.88	1301.44	98.08
1.53	0.02	5.04	3.73	0.28

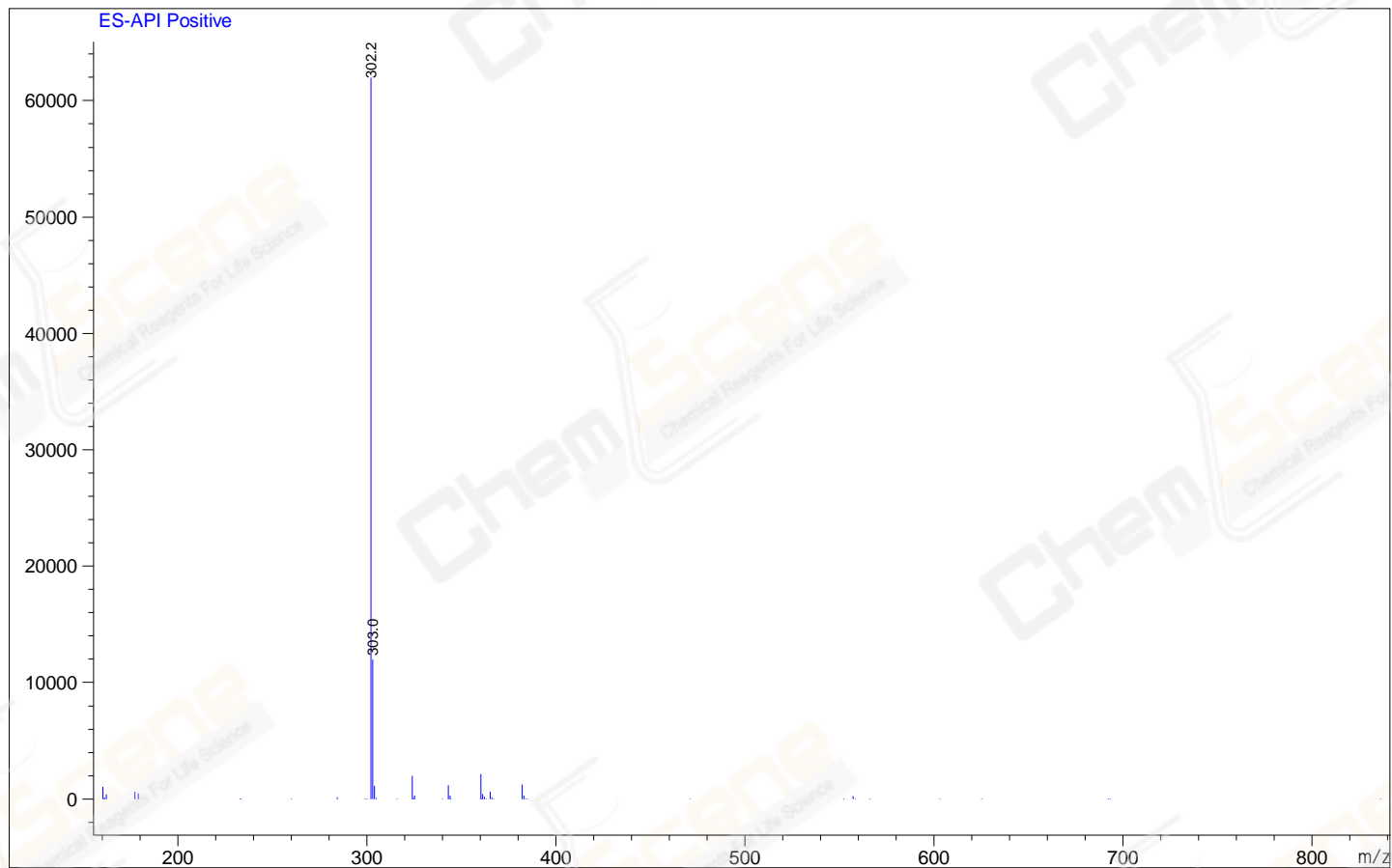
Integration Results for MSD1 TIC, MS File

RetTim	Width	Area	Height	Area%
1.24	0.06	59283.92	17016.43	5.54
1.30	0.06	1011008.88	312.25	94.46

Ret. Time: 1.24 <<<< POSITIVE SPECTRA >>>>



Ret. Time: 1.30



*** End of Report ***