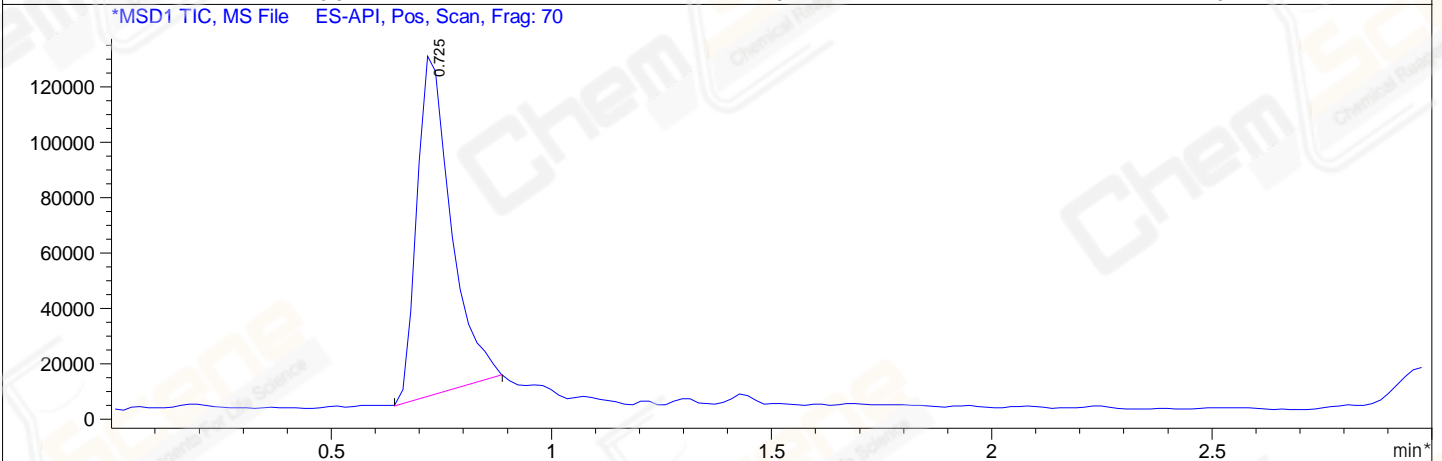
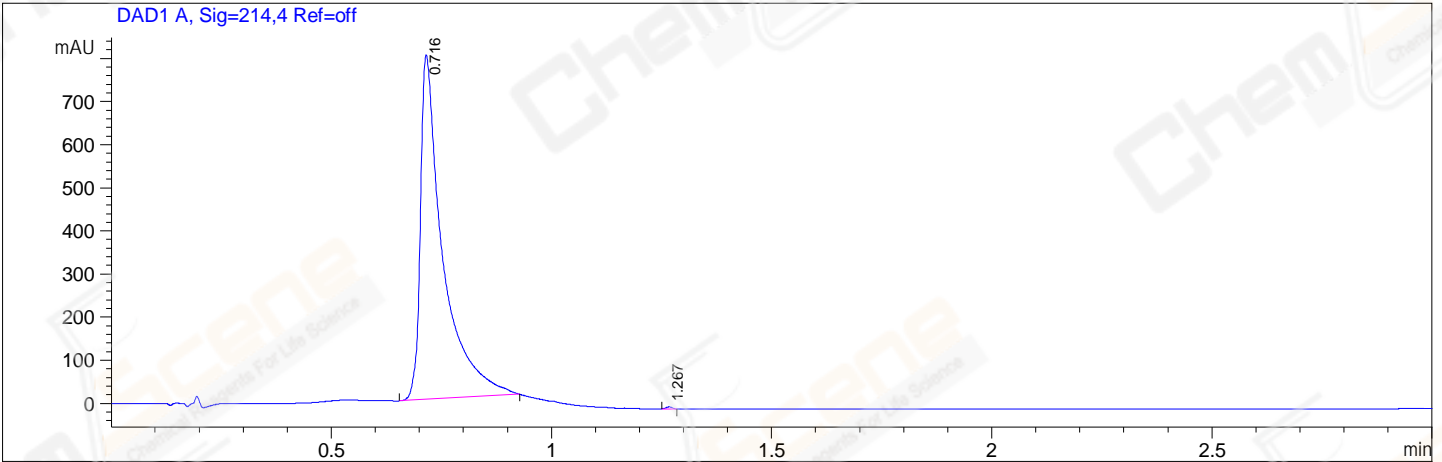


File E:\ChemStation\1\DATA\2023\2023-07\2023-07-31\BIZ2023-728-WLQ5-UPLC-MS-10-009280.D
 Injection Date : 31-Jul-23, 08:57:46 Tgt Mass(EZX) :
 Sample Name : BIZ2023-728-WLQ5 Location : P1-A-03
 Acq. Operator : LY_2278 Inj : 1
 Spec. Reported : MS Integration Inj Volume : 5 ul
 Acq. Method : E:\ChemStation\1\Methods\1-POS-UPLC3.0MIN(1.2)(150-2000)-polar.M
 Analysis Method : E:\CHEMSTATION\1\METHODS\1-POS-UPLC3.0MIN(1.2)(150-2000)-polar.M
 CAS NO. : 320367-13-3 WalkUp method: '1-POS-3MIN-polar' Project: BIZ2023
 Method Info : Mobile Phase: A: water(0.01%TFA) B:ACN(0.01%TFA)
 Gradient: 5% to 95%B within 0.8 min
 Flow Rate :1.2ml/min
 Column :Shim-pack Scepter C18-120, 3.0*33mm,3um
 Oven Temperature : 45C



Integration Results for DAD1 A, Sig=214,4 Ref=off

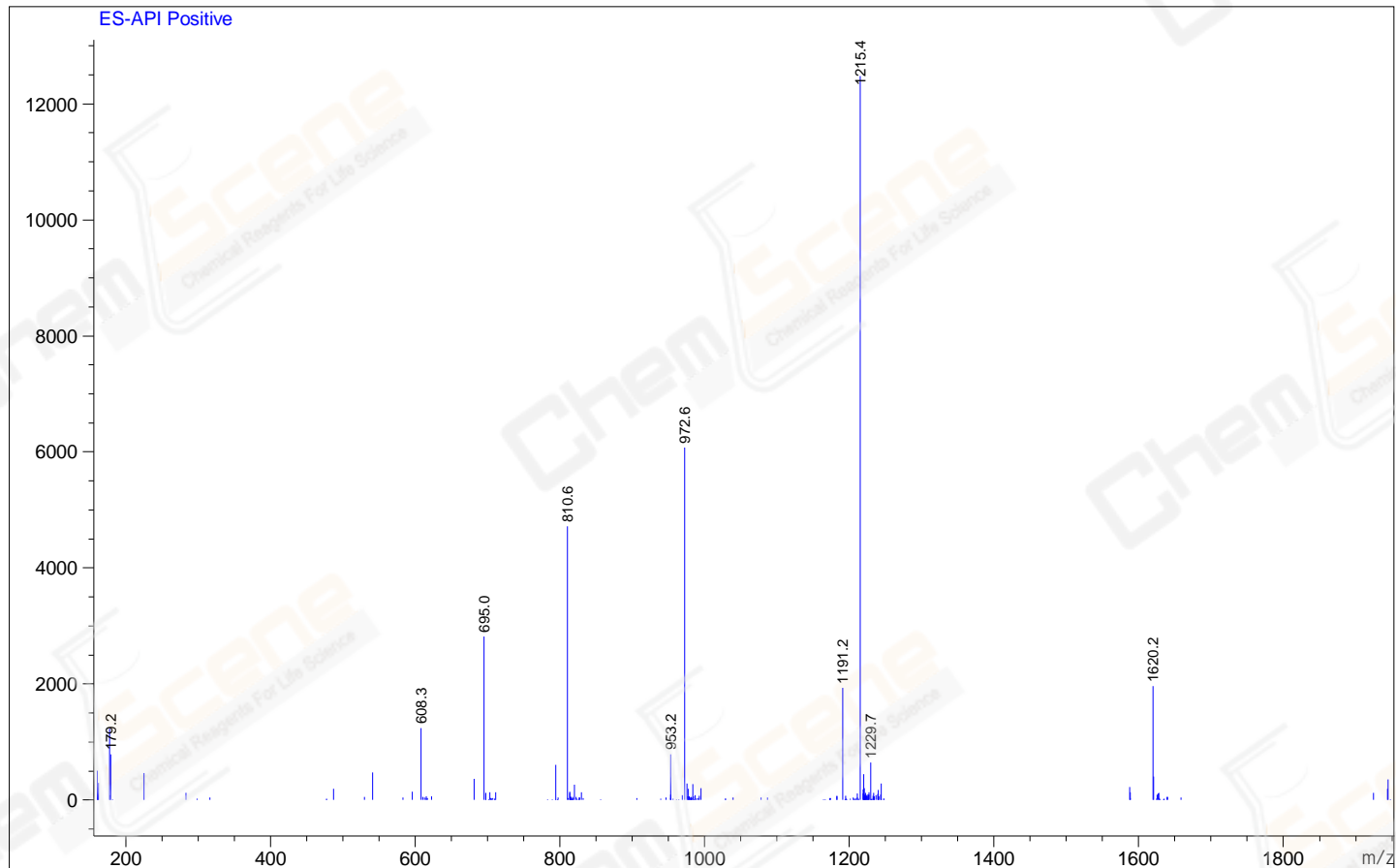
RetTim	Width	Area	Height	Area%
0.72	0.06	2820.98	799.53	99.85
1.27	0.02	4.19	4.59	0.15

Integration Results for MSD1 TIC, MS File

RetTim	Width	Area	Height	Area%
0.73	0.09	660808.25	128080.95	100.00

Ret. Time: 0.73

<<<< POSITIVE SPECTRA >>>>



*** End of Report ***