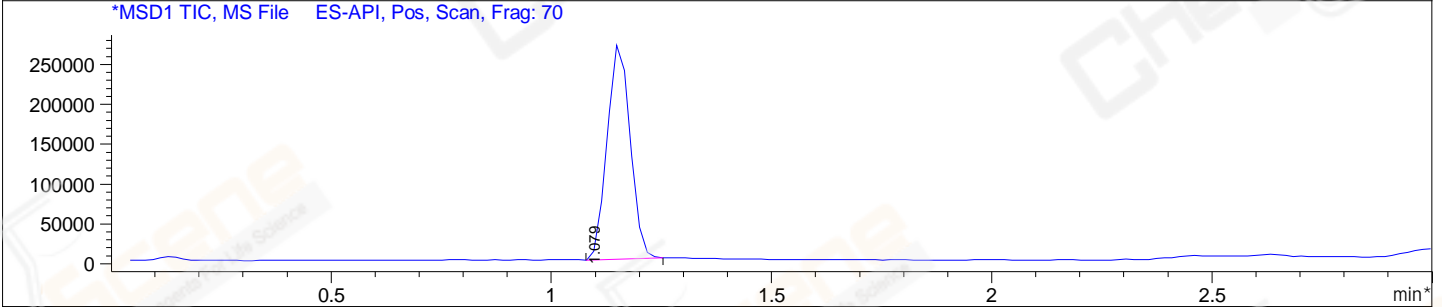
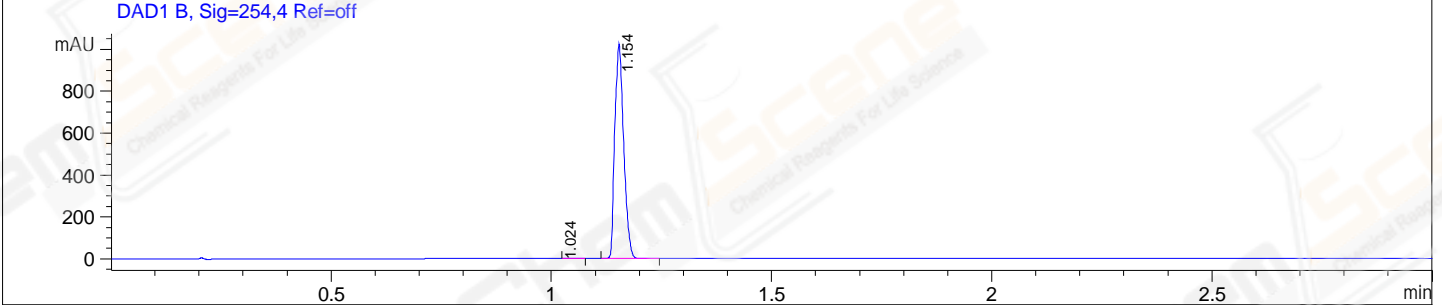
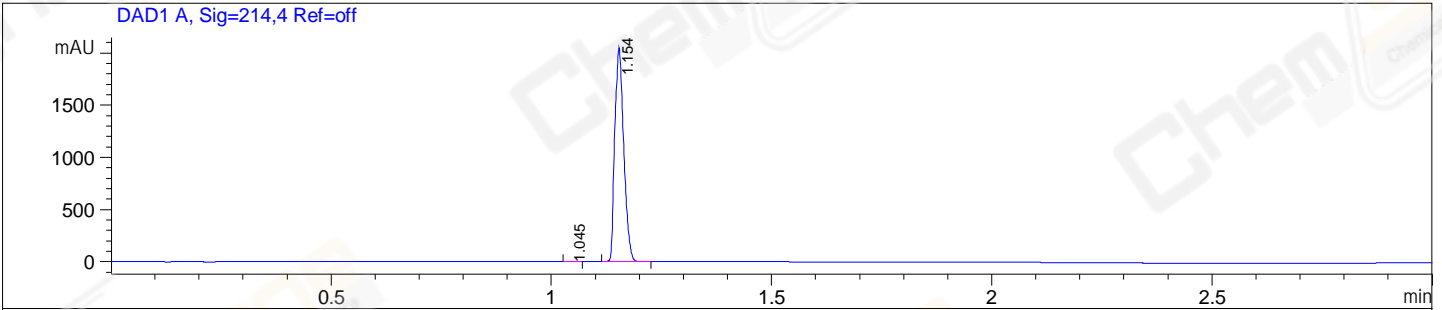


File E:\ChemStation\1\DATA\2023\2023-08\2023-08-01\BIZ2023-801-WLQ17-UPLC-MS-10-009470.D
 Injection Date : 01-Aug-23, 19:07:07 Tgt Mass(EZX) :
 Sample Name : BIZ2023-801-WLQ17 Location : P2-D-10
 Acq. Operator : LY_2278 Inj : 1
 Spec. Reported : MS Integration Inj Volume : 1 ul
 Acq. Method : E:\ChemStation\1\Methods\1-POS-UPLC3.0MIN(1.2)(150-1000).M
 Analysis Method : E:\CHEMSTATION\1\METHODS\1-POS-UPLC3.0MIN(1.2)(150-1000).M
 CAS NO. : 1092939-17-7 WalkUp method: '1-POS-3MIN' Project: BIZ2023
 Method Info : Mobile Phase: A: water(0.01%TFA) B:ACN(0.01%TFA)
 Gradient: 5% to 95%B within 2.0 min
 Flow Rate :1.2ml/min
 Column :Shim-pack Scepter C18-120, 3.0*33mm,3um
 Oven Temperature : 45C



Integration Results for DAD1 A, Sig=214,4 Ref=off

RetTim	Width	Area	Height	Area%
1.04	0.02	1.08	0.93	0.04
1.15	0.02	2888.70	2052.13	99.96

Integration Results for DAD1 B, Sig=254,4 Ref=off

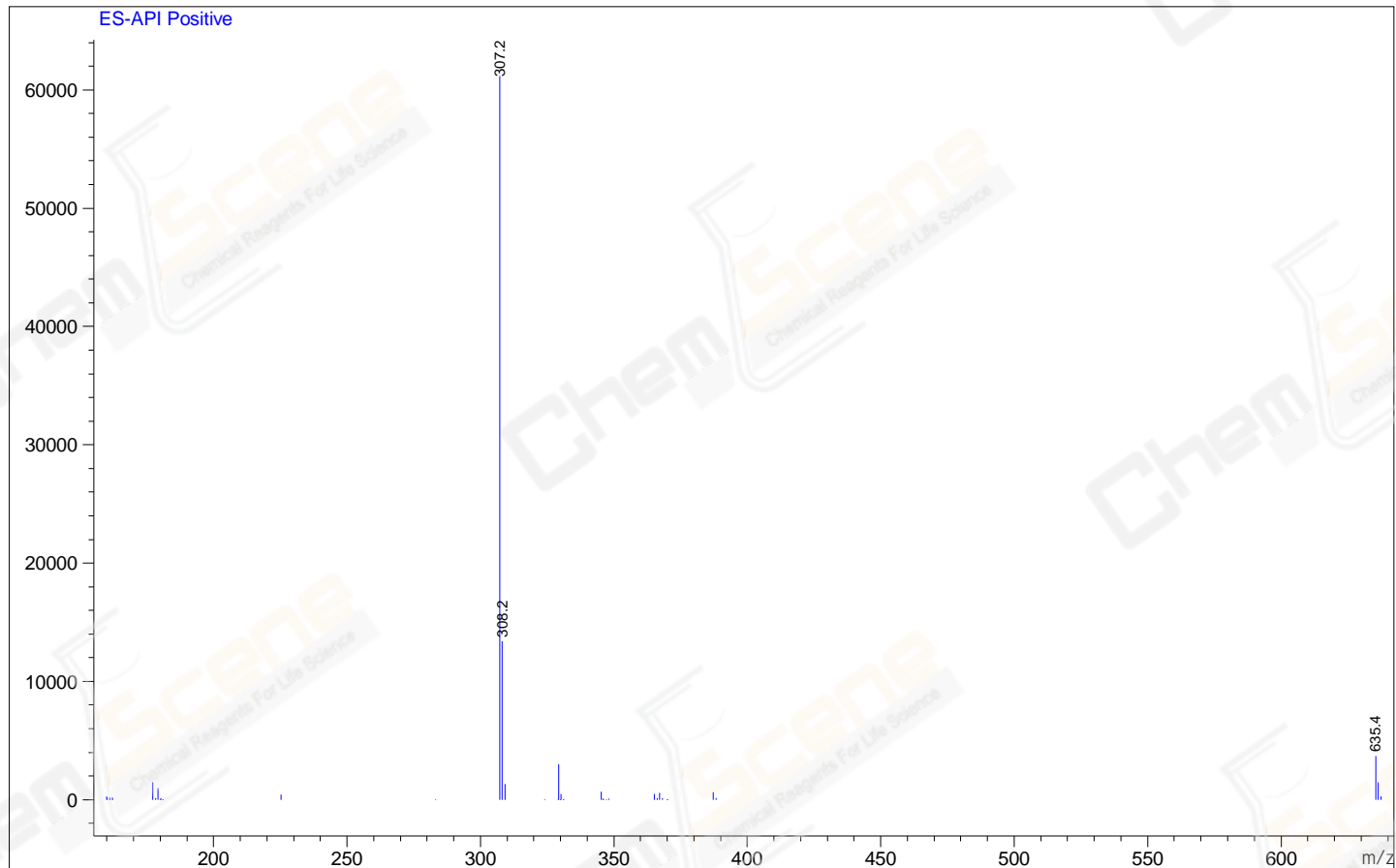
RetTim	Width	Area	Height	Area%
1.02	0.02	0.77	0.01	0.05
1.15	0.02	1433.44	1025.68	99.95

Integration Results for MSD1 TIC, MS File

RetTim	Width	Area	Height	Area%
1.08	0.06	983886.38	23.18	100.00

Ret. Time: 1.08

<<<< POSITIVE SPECTRA >>>>



*** End of Report ***