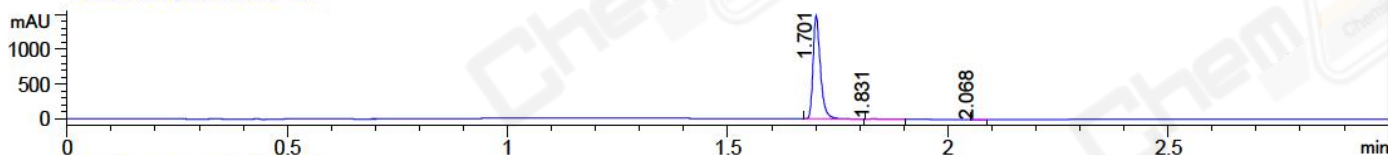
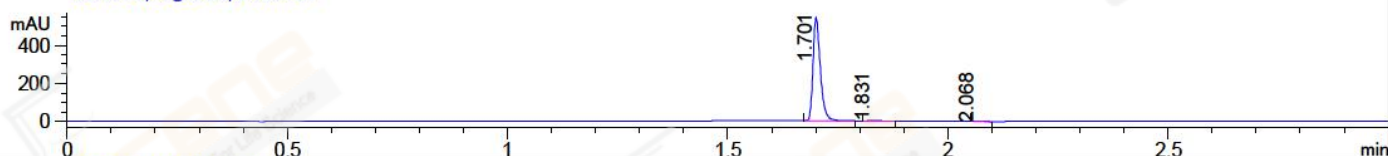


File ..Data\20180108\20180108-2\BIZ2018-108-WYQ7.D Tgt Mass (CHM):
 Injection Date : 8 Jan 18 7:11 pm +0800 Seq. Line : 28
 Sample Name : BIZ2018-108-WYQ7 Location : P1-F-03
 Acq. Operator : SYSTEM Inj : 1
 Spec. Reported : MS Integration Inj Volume : 1 ul
 Acq. Method : D:\LCMS03\Data\20180108\20180108-2\1-POS-3MIN.M
 Analysis Method : D:\LCMS03\Data\20180108\20180108-2\1-POS-3MIN.M
 Catalog No : CS-0150 Batch#28157
 Method Info : Mobile Phase: A: water(0.01%TFA) B:ACN(0.01%TFA)
 Gradient: 5% to 95%B within 1.3 min
 Flow Rate :1.8ml/min
 Column :SunFire C18, 4.6*50mm,3.5um A-RP-186
 Oven Temperature : 45C

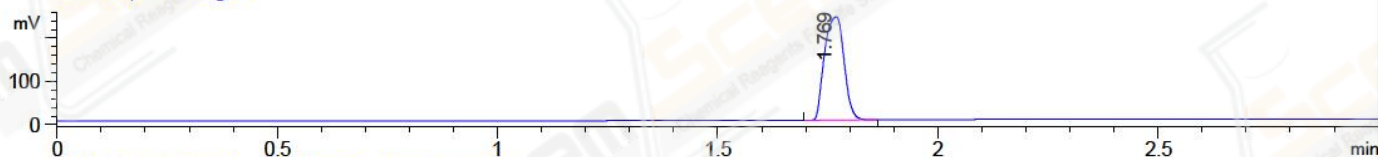
DAD1 A, Sig=214,4 Ref=off



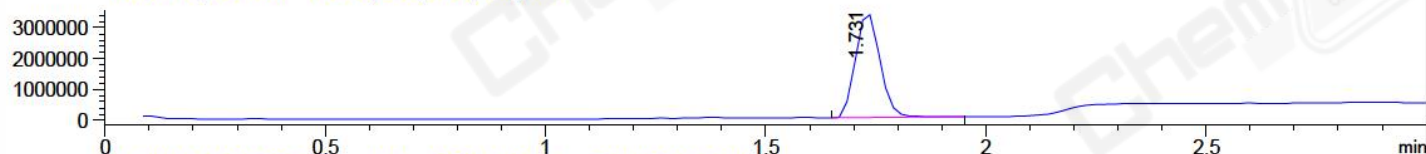
DAD1 B, Sig=254,4 Ref=off



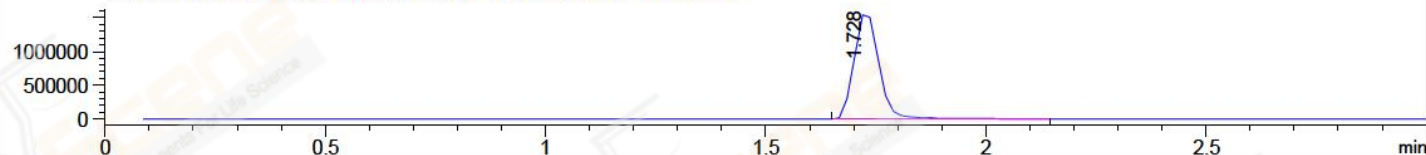
ELS1 A, ELSD Signal



MSD1 TIC, MS File ES-API, Pos, Scan, Frag: 70



Ion 308.1, MSD1 308.1, Target Mass 307.1 +H Positive, EIC=307.8:308.8



Integration Results for DAD1 A, Sig=214,4 Ref=off

RetTim	Width	Area	Height	Area%	MS (+)
1.70	0.02	1714.74	1478.27	99.61	308
1.83	0.02	5.83	4.13	0.34	308
2.07	0.02	0.84	0.86	0.05	233

Integration Results for DAD1 B, Sig=254,4 Ref=off

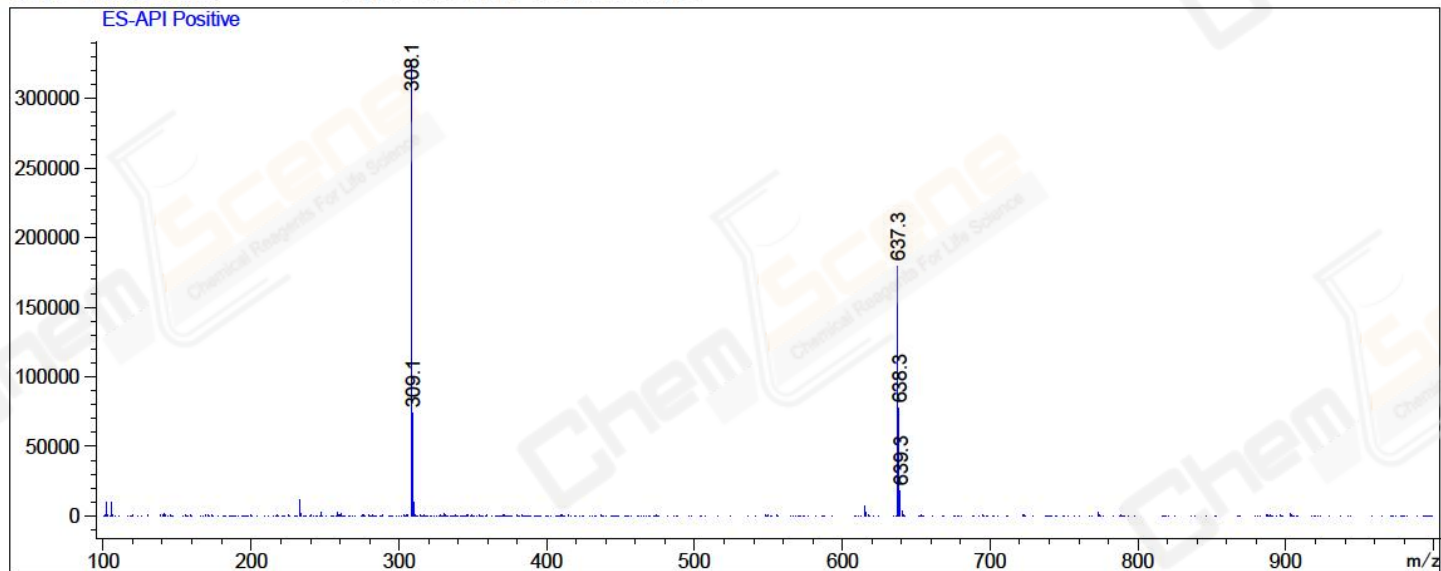
RetTim	Width	Area	Height	Area%	MS (+)
1.70	0.02	630.61	542.55	99.14	308
1.83	0.02	4.76	3.46	0.75	308
2.07	0.02	0.72	0.67	0.11	233

Integration Results for MSD1 TIC, MS File

RetTim	Width	Area	Height	Area%	MS (+)
1.73	0.06	13197825.00	3401433.50	100.00	308

Ret. Time: 1.73

<<<< POSITIVE SPECTRA >>>>



*** End of Report ***