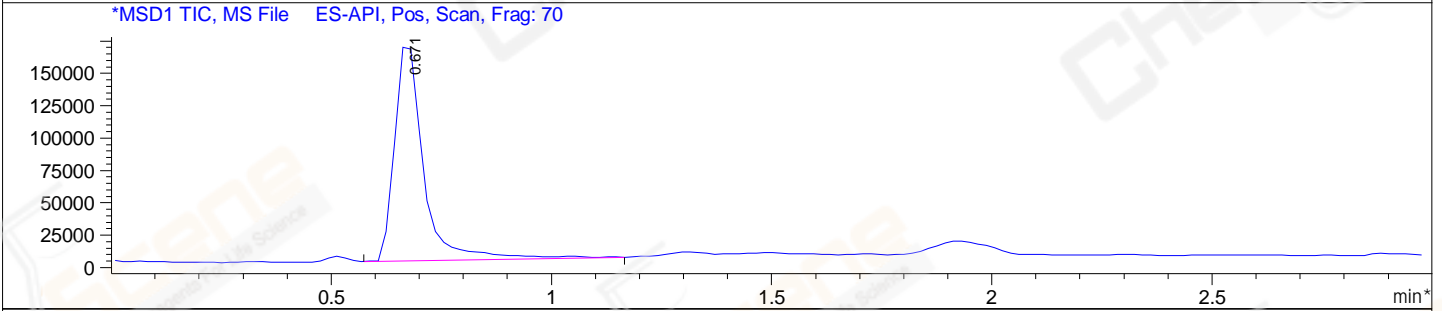
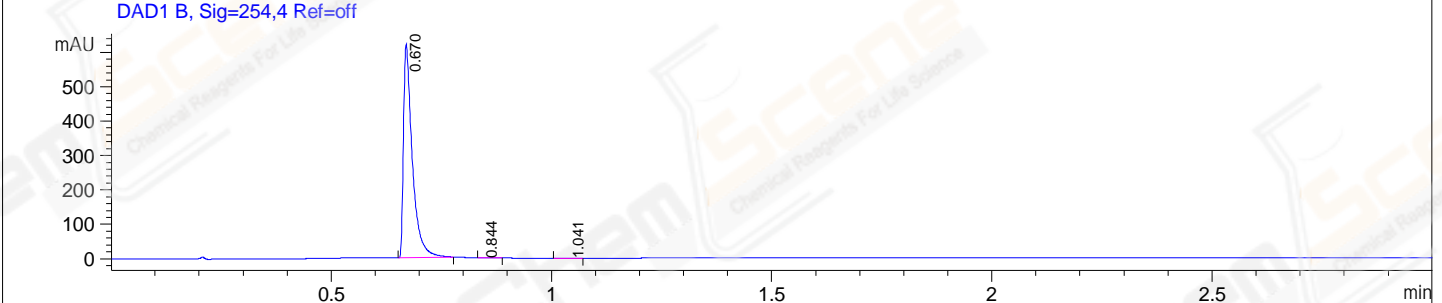
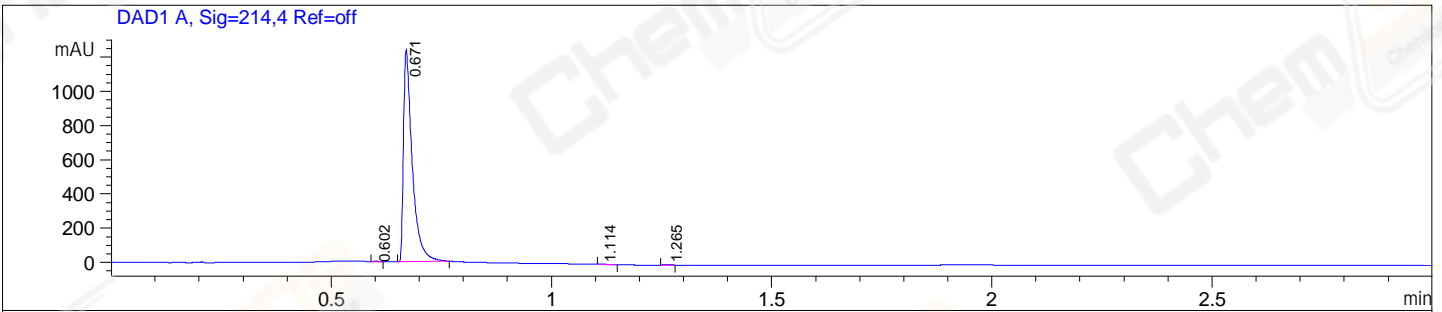


File E:\ChemStation\1\DATA\2023\2023-08\2023-08-04\BIZ2023-804-WLQ31-UPLC-MS-10-009776.D
 Injection Date : 04-Aug-23, 16:51:42 Tgt Mass(EZX) :
 Sample Name : BIZ2023-804-WLQ31 Location : P1-F-11
 Acq. Operator : LY_2278 Inj : 1
 Spec. Reported : MS Integration Inj Volume : 1 ul
 Acq. Method : E:\ChemStation\1\Methods\1-POS-UPLC3.0MIN(1.2)(150-2000)-polar.M
 Analysis Method : E:\CHEMSTATION\1\METHODS\1-POS-UPLC3.0MIN(1.2)(150-2000)-polar.M
 CAS NO. : 950455-15-9 WalkUp method: '1-POS-3MIN-polar' Project: BIZ2023
 Method Info : Mobile Phase: A: water(0.01%TFA) B:ACN(0.01%TFA)
 Gradient: 5% to 95%B within 0.8 min
 Flow Rate :1.2ml/min
 Column :Shim-pack Scepter C18-120, 3.0*33mm,3um
 Oven Temperature : 45C



Integration Results for DAD1 A, Sig=214,4 Ref=off

RetTim	Width	Area	Height	Area%
0.60	0.01	1.01	1.49	0.06
0.67	0.02	1714.84	1237.83	99.80
1.11	0.02	1.46	1.13	0.09
1.26	0.02	1.00	0.92	0.06

Integration Results for DAD1 B, Sig=254,4 Ref=off

RetTim	Width	Area	Height	Area%
0.67	0.02	865.46	620.92	99.81
0.84	0.03	1.15	0.61	0.13
1.04	0.02	0.51	0.37	0.06

Integration Results for MSD1 TIC, MS File

RetTim	Width	Area	Height	Area%
0.67	0.07	771638.81	173676.20	100.00

Ret. Time: 0.67

<<<< POSITIVE SPECTRA >>>>

