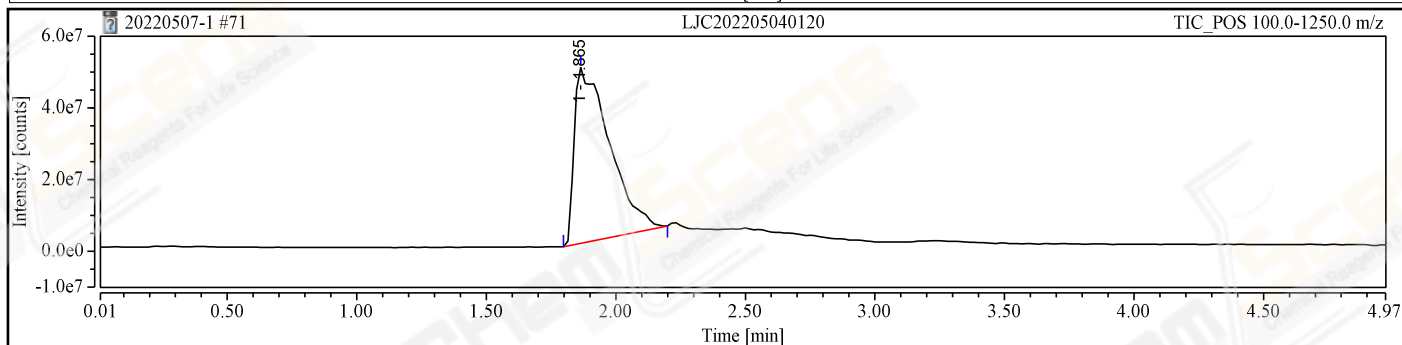
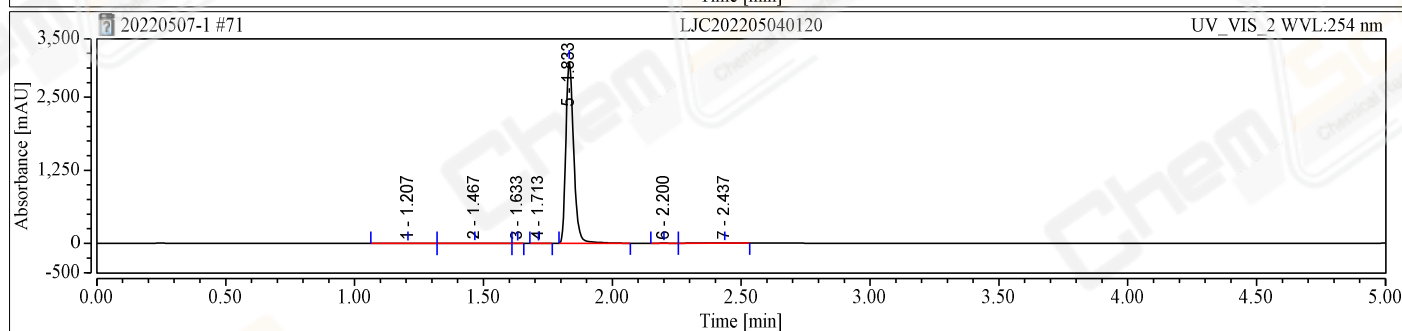
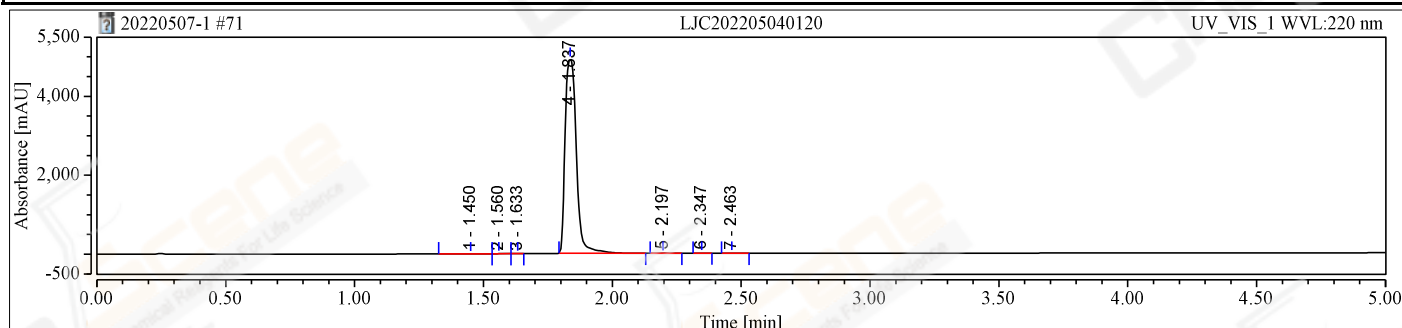


Chromatogram and Results

Sample ID: LJC202205040120	Comment: 187.62
CAS NO.: 82485-84-5	Channel: TIC_POS
Vial Number: GB1	Wavelength: 220
Injection Type: Unknown	Injection Volume: 1
Calibration Level: LCMS10401	Injection Time: 07/05/2022 18:15
Instrument Method: LCMS-1.0-5min	InstMeth.creation_time: 28/08/2020 09:10
Processing Method: LJC202205040120	Last update_time: 08/05/2022 13:21
seq.creation_operator: Lihui	
chrom://ahyy-cm7/CM7DATA/ARD/LCMS/LCMS10401/Sequence/2022/202205/20220507-1.seq/859.smp/UV_VIS_1.channel/UV_VIS_1.chm	



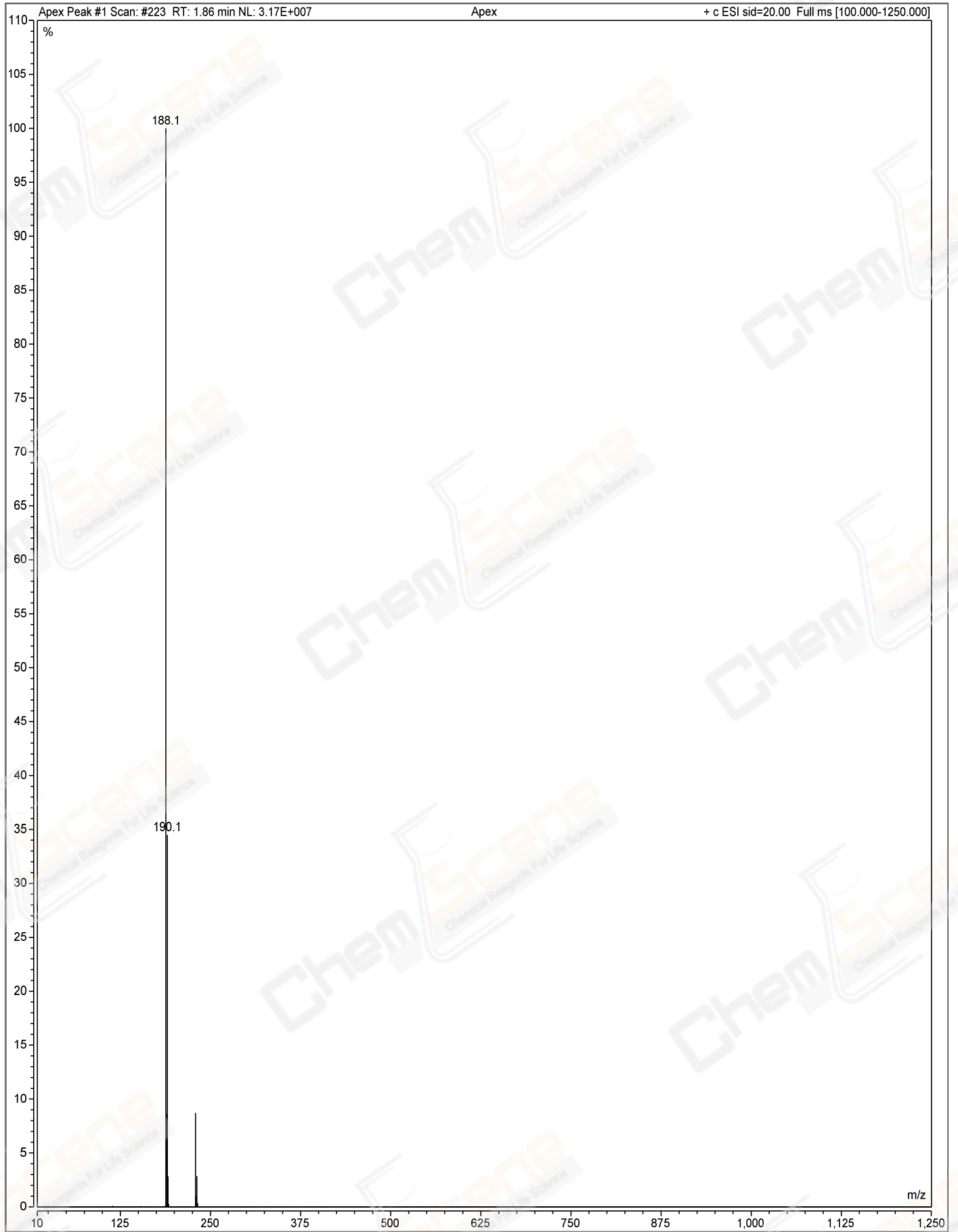
Peak Results for UV_VIS_1

No.	Retention Time min	Area mAU*min	Height mAU	Plates (USP)	Resolution (USP)	Match	Rel.Area %	Peak Name
1	1.450	0.026	0.224	2337	1.10	n.a.	0.010	
2	1.560	0.008	0.175	6021	1.33	n.a.	0.003	
3	1.633	0.010	0.552	48111	4.07	n.a.	0.004	
4	1.837	246.972	4915.863	11001	5.08	n.a.	99.914	
5	2.197	0.124	2.697	15024	2.34	n.a.	0.050	
6	2.347	0.030	0.855	27402	1.87	n.a.	0.012	
7	2.463	0.015	0.336	20767	n.a.	n.a.	0.006	
Total:		247.184	4920.702	130663	15.78			

Peak Results for UV_VIS_2

No.	Retention Time min	Area mAU*min	Height mAU	Plates (USP)	Resolution (USP)	Match	Rel.Area %	Peak Name
1	1.207	0.002	0.020	2337	1.10	n.a.	0.001	
2	1.467	0.008	0.175	6021	1.33	n.a.	0.003	
3	1.633	0.010	0.552	48111	4.07	n.a.	0.004	
4	1.713	0.010	0.552	48111	4.07	n.a.	0.004	
5	1.833	246.972	4915.863	11001	5.08	n.a.	99.914	
6	2.200	0.124	2.697	15024	2.34	n.a.	0.050	
7	2.437	0.030	0.855	27402	1.87	n.a.	0.012	

No.	Retention Time min	Area mAU*min	Height mAU	Plates (USP)	Resolution (USP)	Match	Rel.Area %	Peak Name
1	1.207	0.019	0.141	1013	1.13	n.a.	0.017	
2	1.467	0.115	0.639	357	0.98	n.a.	0.105	
3	1.633	0.012	0.636	47617	1.58	n.a.	0.011	
4	1.713	0.007	0.143	9202	1.91	n.a.	0.006	
5	1.833	109.286	3103.826	18287	5.80	n.a.	99.746	
6	2.200	0.046	0.990	14894	1.68	n.a.	0.042	
7	2.437	0.080	0.420	2162	n.a.	n.a.	0.073	
Total:		109.564	3106.797	93532	13.08			



components_1

Mass	Intensity	Relative Intensity
m/z	counts	%
188.13	31669858	100.00%

components_2

Error
index