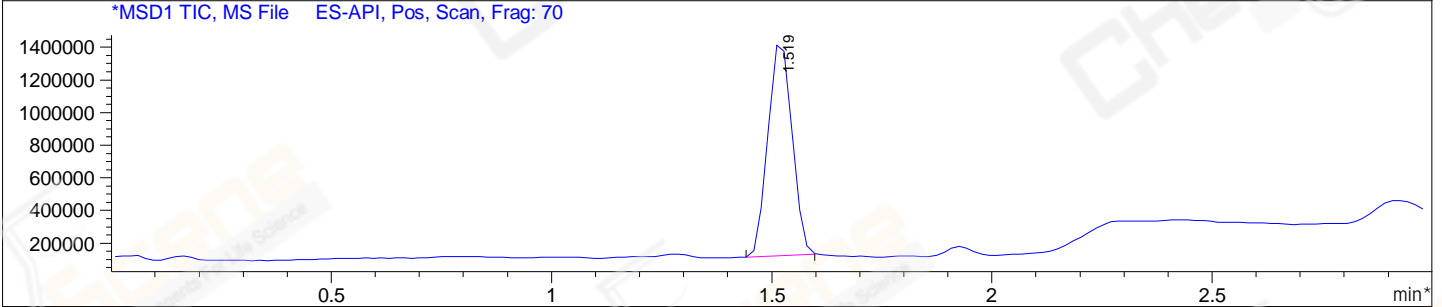
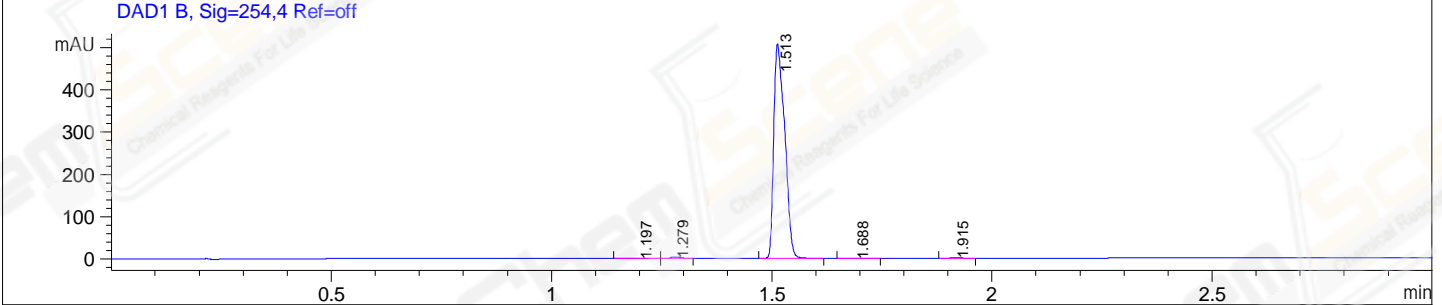
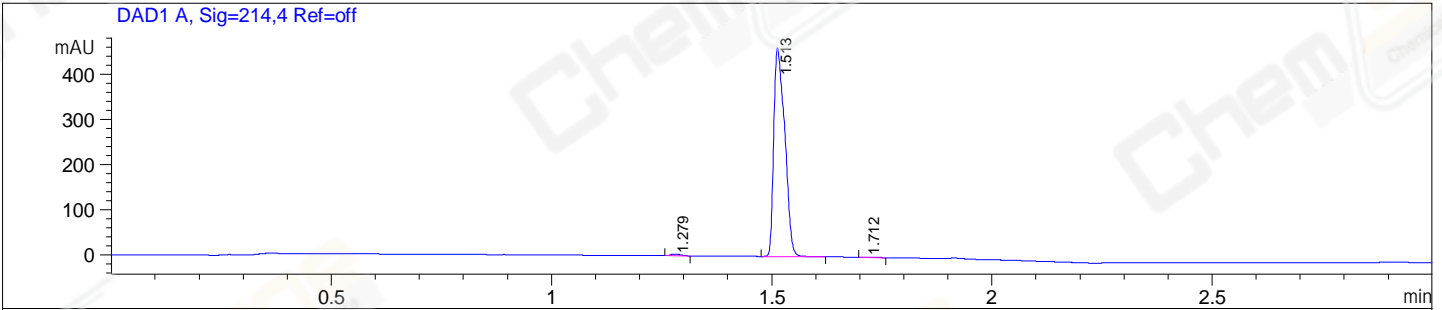


File E:\ChemStation\1\DATA\2023\2023-08\2023-08-22\BIZ2023-822-SCH13-UPLC-MS-10-011419.D  
 Injection Date : 22-Aug-23, 16:56:24 Tgt Mass(EZX) :  
 Sample Name : BIZ2023-822-SCH13 Location : P2-B-07  
 Acq. Operator : LY\_2278 Inj : 1  
 Spec. Reported : MS Integration Inj Volume : 0.5 ul  
 Acq. Method : E:\ChemStation\1\Methods\1-POS-UPLC3.0MIN(1.2)(150-1000).M  
 Analysis Method : E:\CHEMSTATION\1\METHODS\1-POS-UPLC3.0MIN(1.2)(150-1000).M  
 CAS NO. : 94061-80-0 WalkUp method: '1-POS-3MIN' Project: BIZ2023  
 Method Info : Mobile Phase: A: water(0.01%TFA) B:ACN(0.01%TFA)  
 Gradient: 5% to 95%B within 2.0 min  
 Flow Rate :1.2ml/min  
 Column :Shim-pack Scepter C18-120, 3.0\*33mm,3um  
 Oven Temperature : 45C



Integration Results for DAD1 A, Sig=214,4 Ref=off

RetTim	Width	Area	Height	Area%
1.28	0.03	5.72	3.60	0.71
1.51	0.02	800.96	461.47	99.18
1.71	0.03	0.90	0.49	0.11

Integration Results for DAD1 B, Sig=254,4 Ref=off

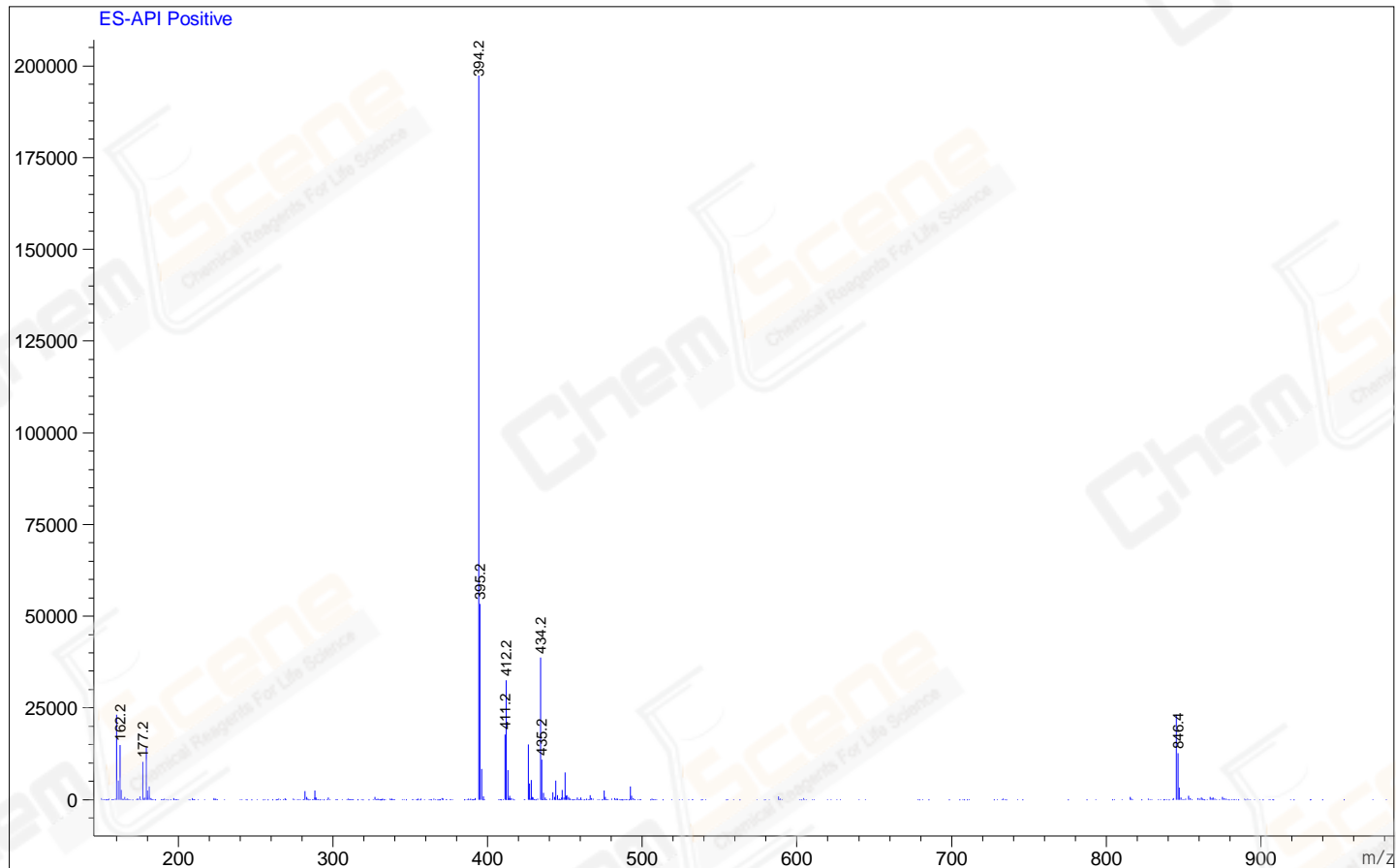
RetTim	Width	Area	Height	Area%
1.20	0.03	0.98	0.47	0.11
1.28	0.03	5.60	3.55	0.63
1.51	0.03	876.13	506.34	98.71
1.69	0.03	1.02	0.43	0.11
1.92	0.03	3.80	2.13	0.43

Integration Results for MSD1 TIC, MS File

RetTim	Width	Area	Height	Area%
1.52	0.06	4953702.00	1355559.88	100.00

Ret. Time: 1.52

<<<< POSITIVE SPECTRA >>>>



\*\*\* End of Report \*\*\*