

File ..2_2 2018-02-02 14-19-45\BIZ2018-202-WYQ15.D Tgt Mass (CHM):

Injection Date : 2 Feb 18 3:25 pm +0800 Seq. Line : 15

Sample Name : BIZ2018-202-WYQ15 Location : P1-F-04

Acq. Operator : XLH_854 Inj : 1

Spec. Reported : MS Integration Inj Volume : 1 ul

Acq. Method : D:\chem32\1\DATA\20180202\20180202_2 2018-02-02 14-19-45\1-POS-3MIN-1.M

Analysis Method : D:\CHEM32\1\DATA\20180202\20180202_2 2018-02-02 14-19-45\1-POS-3MIN-1.M

Catalog No : CS-6150 Batch#28609 A-RP-189

Method Info : Mobile Phase: A: water(0.01%TFA) B:ACN(0.01%TFA)

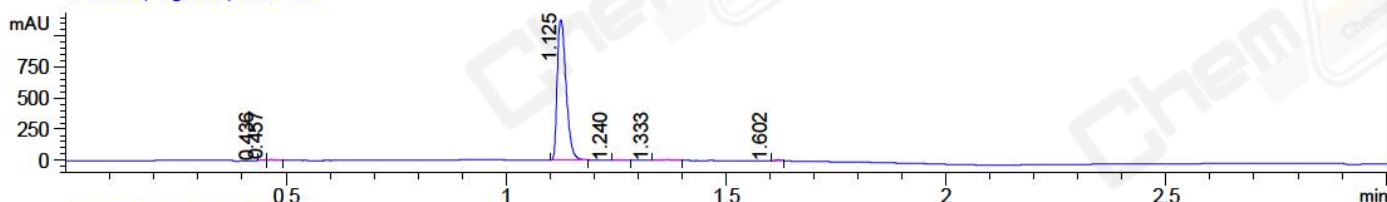
Gradient: 5% to 95%B within 1.3 min

Flow Rate :1.8ml/min

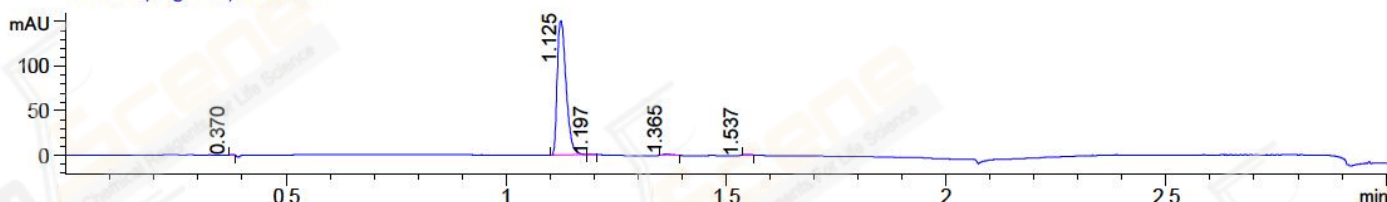
Column :SunFire C18, 4.6*50mm,3.5um A-RP-186

Oven Temperature : 45C

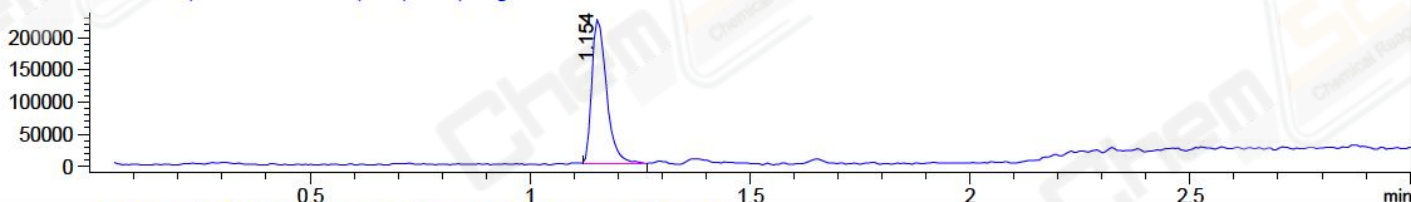
DAD1 B, Sig=214,4 Ref=off



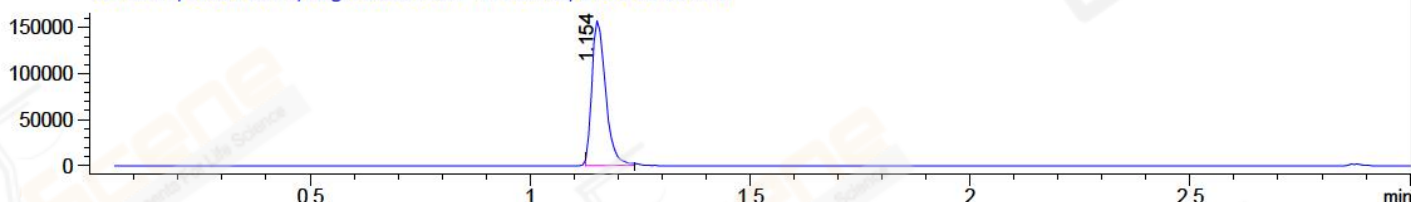
DAD1 C, Sig=254,4 Ref=off



MSD1 TIC, MS File ES-API, Pos, Scan, Frag: 70



Ion 381.1, MSD1 381.1, Target Mass 380.1 +H Positive, EIC=380.8:381.8



Integration Results for DAD1 B, Sig=214,4 Ref=off

RetTim	Width	Area	Height	Area%	MS (+)
0.44	0.02	3.49	0.11	0.22	ND
0.46	0.02	5.43	2.70	0.34	ND
1.12	0.02	1578.99	1131.84	98.56	381
1.24	0.10	2.07	0.13	0.13	381
1.33	0.06	6.34	0.18	0.40	324
1.60	0.02	5.68	-0.70	0.35	ND

Integration Results for DAD1 C, Sig=254,4 Ref=off

RetTim	Width	Area	Height	Area%	MS (+)
0.37	0.01	0.37	0.01	0.18	ND
1.12	0.01	209.34	150.66	98.39	381
1.20	0.02	0.15	0.19	0.07	381
1.37	0.03	2.17	1.54	1.02	324
1.54	0.02	0.74	-0.02	0.35	ND

Integration Results for MSD1 TIC, MS File

1.15 0.04 524355.50 224894.77 100.00 381

RetTim	Width	Area	Height	Area%	MS (+)
--------	-------	------	--------	-------	--------

Ret. Time: 1.15

<<<< POSITIVE SPECTRA >>>>

