

File ..\2018\20180224\20180224S\BIZ2018-224-WYQ5.D Tgt Mass (CHM):

Injection Date : 24 Feb 18 2:52 pm +0800 Seq. Line : 77

Sample Name : BIZ2018-224-WYQ5 Location : P1-F-07

Acq. Operator : SYSTEM Inj : 1

Spec. Reported : MS Integration Inj Volume : 1 ul

Acq. Method : D:\LCMS03\Data\2018\20180224\20180224S\1-POS-3MIN.M

Analysis Method : D:\LCMS03\Data\2018\20180224\20180224S\1-POS-3MIN.M

Catalog No : CS-0150 Batch#28749

Method Info : Mobile Phase: A: water(0.01%TFA) B:ACN(0.01%TFA)

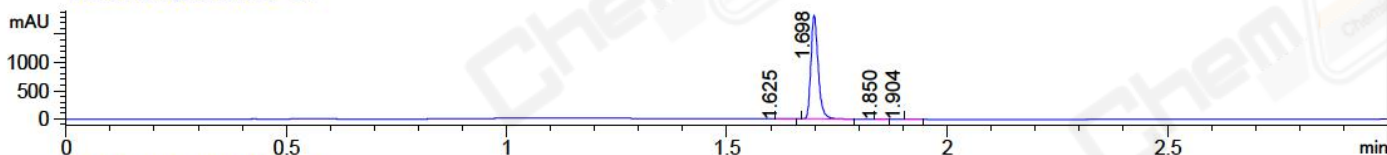
Gradient: 5% to 95%B within 1.3 min

Flow Rate :1.8ml/min

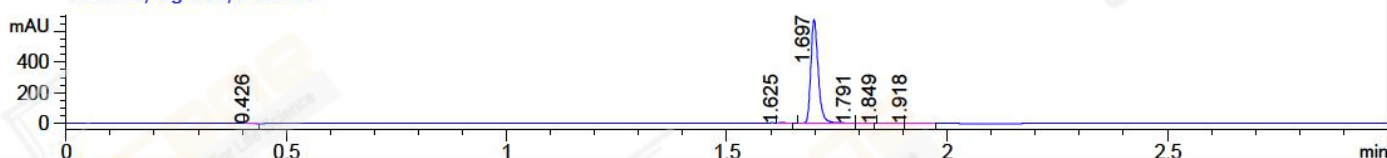
Column :SunFire C18, 4.6*50mm,3.5um A-RP-186

Oven Temperature : 45C

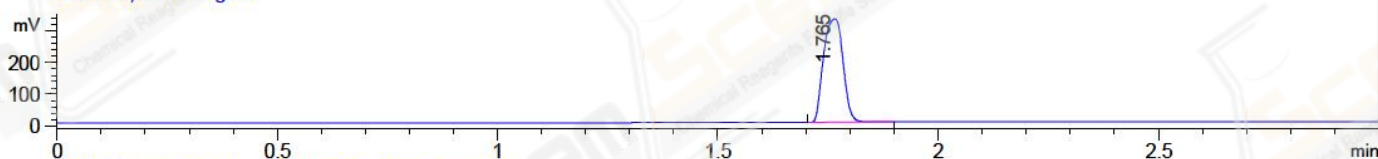
DAD1 A, Sig=214,4 Ref=off



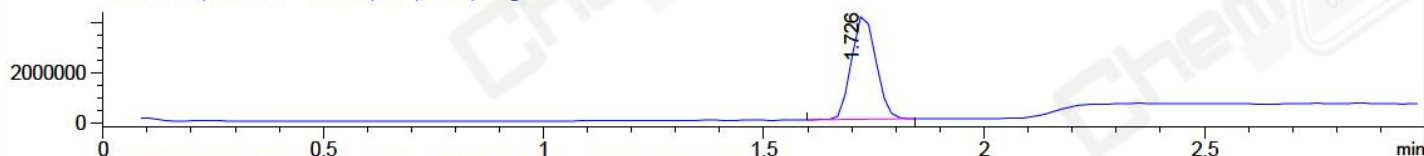
DAD1 B, Sig=254,4 Ref=off



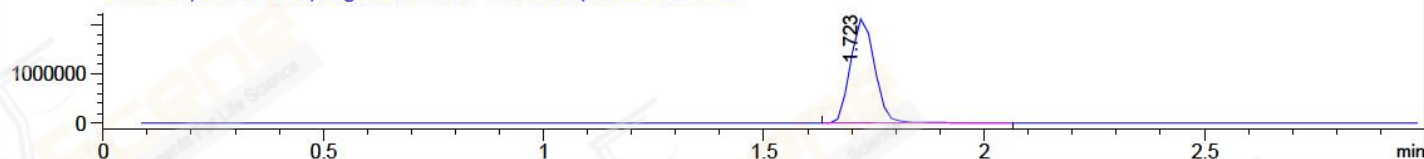
ELS1 A, ELSD Signal



MSD1 TIC, MS File ES-API, Pos, Scan, Frag: 70



Ion 308.1, MSD1 308.1, Target Mass 307.1 +H Positive, EIC=307.8:308.8



Integration Results for DAD1 A, Sig=214,4 Ref=off

RetTim	Width	Area	Height	Area%	MS (+)
1.62	0.02	1.47	1.16	0.07	102
1.70	0.02	2090.23	1833.89	99.82	308
1.85	0.02	1.07	0.87	0.05	105
1.90	0.02	1.15	0.16	0.06	105

Integration Results for DAD1 B, Sig=254,4 Ref=off

RetTim	Width	Area	Height	Area%	MS (+)
0.43	0.01	2.26	3.09	0.29	102
1.63	0.02	0.50	0.45	0.06	102
1.70	0.02	777.93	674.77	99.46	308
1.79	0.02	0.47	0.45	0.06	308
1.85	0.02	0.31	0.20	0.04	105
1.92	0.02	0.66	0.45	0.08	105

Integration Results for ELS1 A, ELSD Signal

RetTim	Width	Area	Height	Area%	MS (+)
--------	-------	------	--------	-------	--------

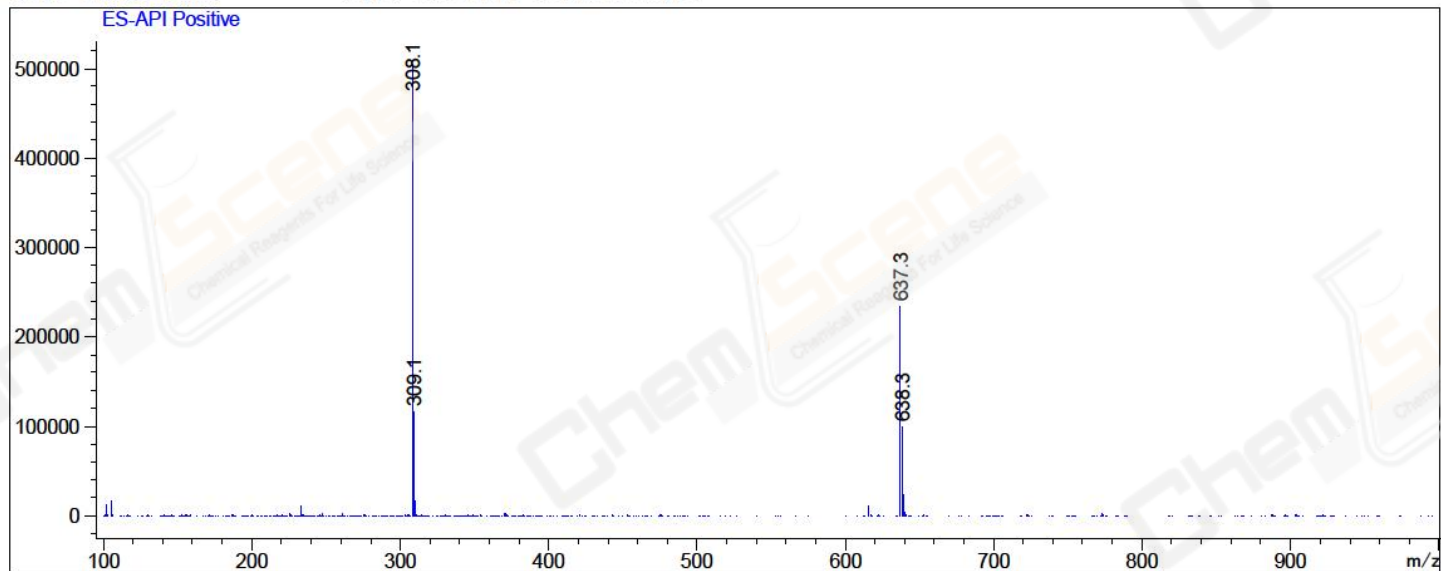
1.77	0.05	1004.18	327.01	100.00	308
------	------	---------	--------	--------	-----

Integration Results for MSD1 TIC, MS File

RetTim	Width	Area	Height	Area%	MS (+)
1.73	0.06	15853619.00	4171797.75	100.00	308

Ret. Time: 1.73

<<<< POSITIVE SPECTRA >>>>



*** End of Report ***