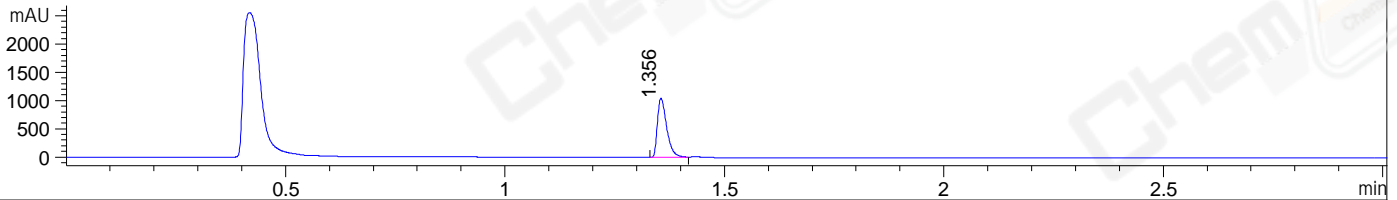
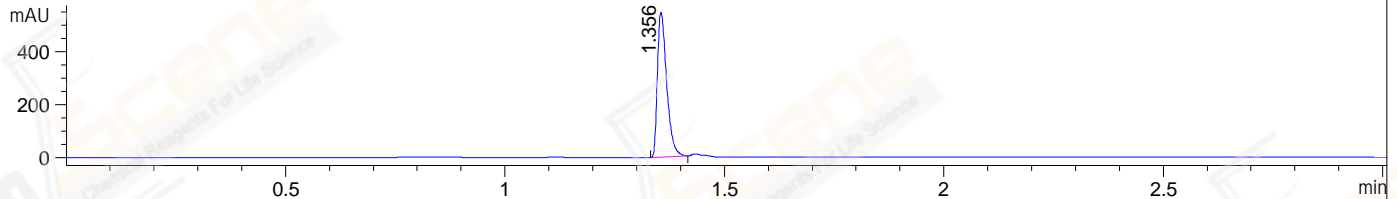


File ..23-08-30\LCJ29520-003-P-UPLC-MS-09-033753.D Tgt Mass (EZX):
 Injection Date : 30-Aug-23, 18:18:34 Seq. Line : 0
 Sample Name : LCJ29520-003-P Location : P2-B-02
 Acq. Operator : admin Inj : 1
 Spec. Reported : MS Integration Inj Volume : 0.2 ul
 Acq. Method : D:\data\1\Methods\1-POS-3MIN(0.6min BQ) C1.M
 Analysis Method : D:\data\1\Methods\1-POS-3MIN(0.6min BQ) C1.M
 CAS NO. : 667880-11-7
 Method Info : Mobile Phase: A: water(0.01%TFA) B:ACN(0.01%TFA)
 Gradient: 5% to95%B within1.3 min
 Flow Rate :1.8ml/min
 Column :Shim-pack Scepter C18-120, 4.5*50mm,3um A-RP-1483
 Oven Temperature : 45C

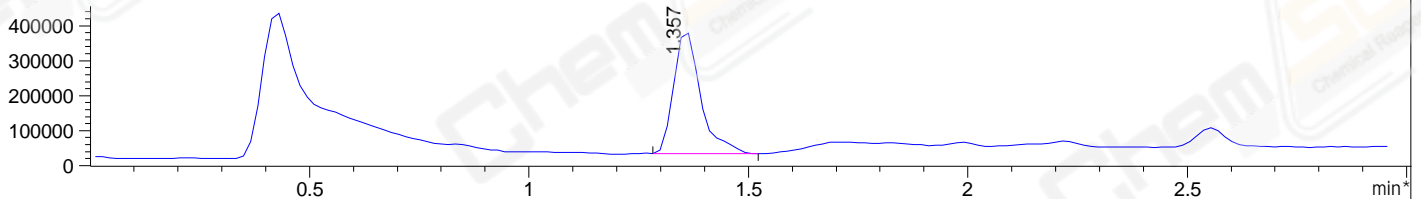
DAD1 A, Sig=214,4 Ref=off



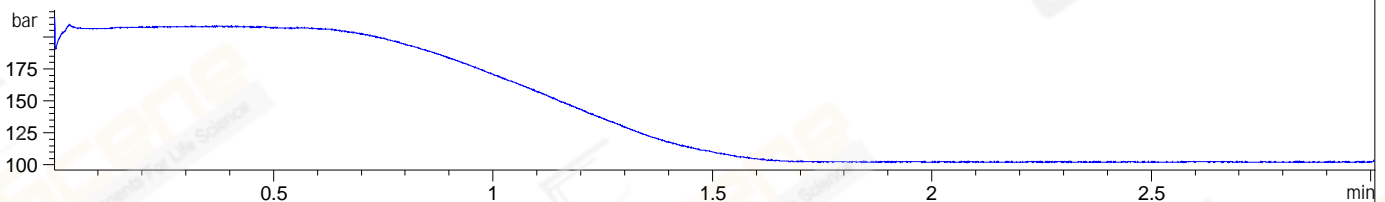
DAD1 B, Sig=254,4 Ref=off



*MSD1 TIC, MS File ES-API, Pos, Scan, Frag: 70



PMP1, PMP1B, Pressure



Integration Results for DAD1 A, Sig=214,4 Ref=off

RetTim	Width	Area	Height	Area%	MS (+)
1.36	0.02	1537.11	1044.35	100.00	371

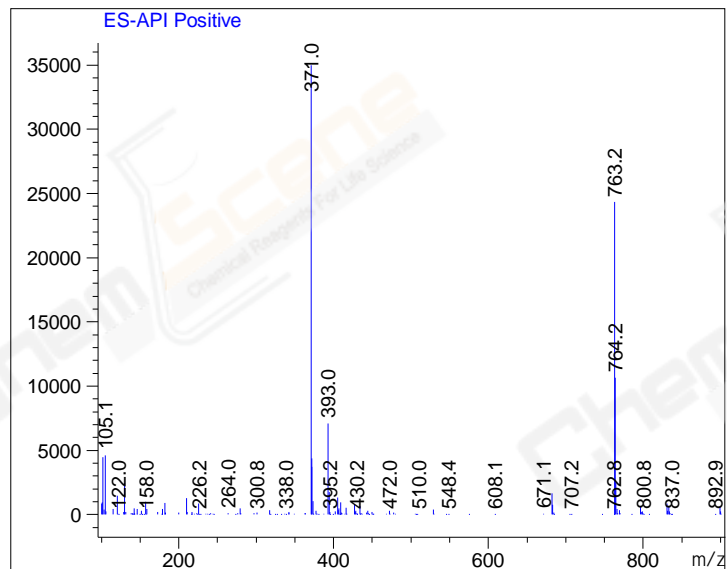
Integration Results for DAD1 B, Sig=254,4 Ref=off

RetTim	Width	Area	Height	Area%	MS (+)
1.36	0.02	802.05	545.50	100.00	371

Integration Results for MSD1 TIC, MS File

RetTim	Width	Area	Height	Area%	MS (+)
1.36	0.07	1487920.88	352262.69	100.00	371

Ret. Time: 1.36 <<<< POSITIVE SPECTRA >>>>



*** End of Report ***