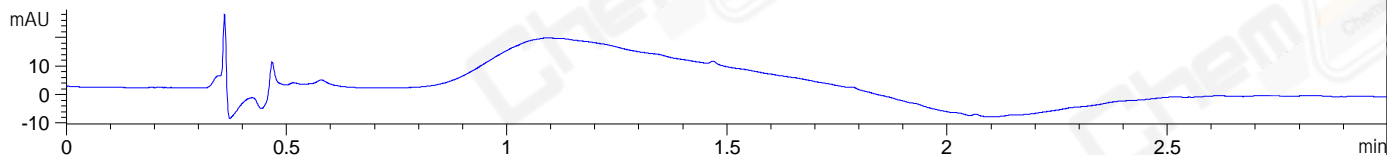
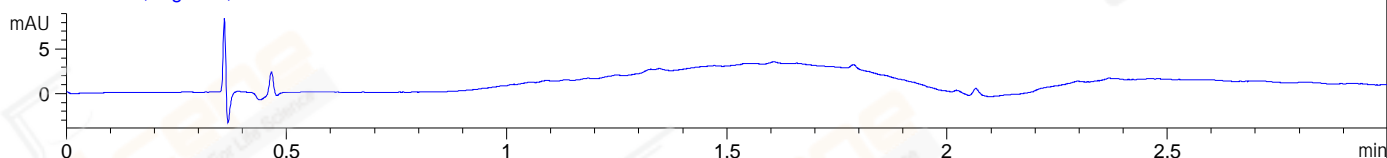


File ..ata\2018\20180312\20180312\YH5261-002-2_0.D Tgt Mass (CHM):
Injection Date : 12 Mar 18 12:03 pm +0800 Seq. Line : 39
Sample Name : YH5261-002-2_0 Location : P1-C-02
Acq. Operator : SYSTEM Inj : 1
Spec. Reported : MS Integration Inj Volume : 1 ul
Acq. Method : D:\LCMS03\Data\2018\20180312\20180312\1-POS-3MIN.M
Analysis Method : D:\LCMS03\Data\2018\20180312\20180312\1-POS-3MIN.M
Catalog No : CS-M2499 Batch#29045
Method Info : Mobile Phase: A: water(0.01%TFA) B:ACN(0.01%TFA)
Gradient: 5% to 95%B within 1.3 min
Flow Rate :1.8ml/min
Column :SunFire C18, 4.6*50mm,3.5um A-RP-186
Oven Temperature : 45C

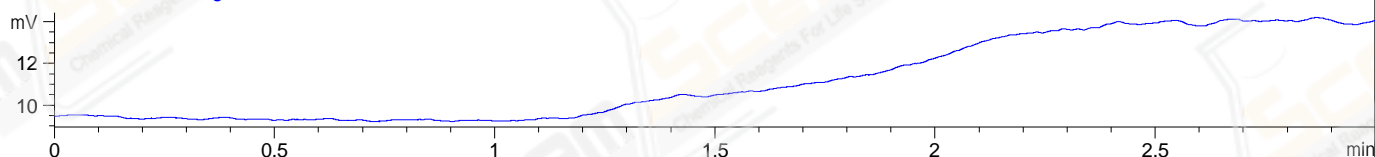
DAD1 A, Sig=214,4 Ref=off



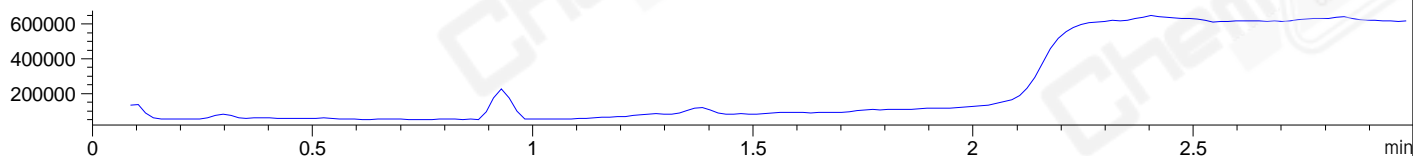
DAD1 B, Sig=254,4 Ref=off



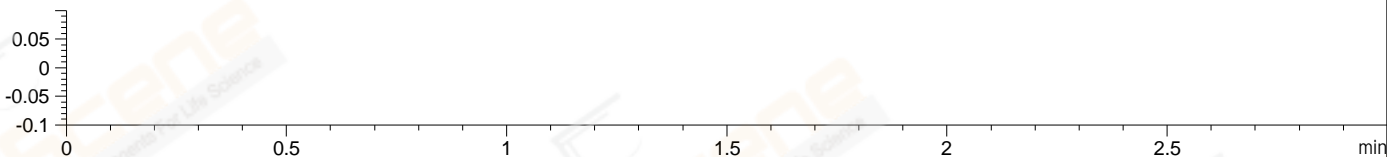
ELS1 A, ELSD Signal



MSD1 TIC, MS File ES-API, Pos, Scan, Frag: 70 **** NO MS PEAKS INTEGRATED ****



Ion 1, MSD1 1, Target Mass 0 +H Positive, EIC=0.7:1.7



Integration Results for DAD1 A, Sig=214,4 Ref=off

RetTim	Width	Area	Height	Area%	MS (+)
-----	-----	-----	-----	-----	-----

Integration Results for DAD1 B, Sig=254,4 Ref=off

RetTim	Width	Area	Height	Area%	MS (+)
-----	-----	-----	-----	-----	-----

Integration Results for ELS1 A, ELSD Signal

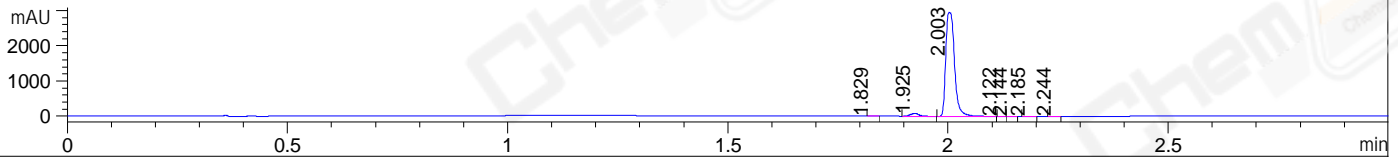
RetTim	Width	Area	Height	Area%	MS (+)
-----	-----	-----	-----	-----	-----

Integration Results for MSD1 TIC, MS File

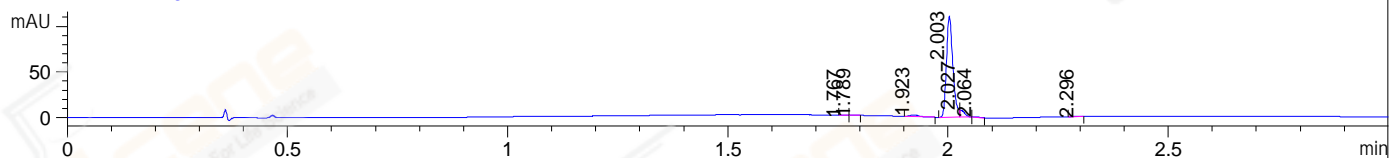
RetTim	Width	Area	Height	Area%	MS (+)
-----	-----	-----	-----	-----	-----

File ..\Data\2018\20180312\20180312\YH5261-002-2.D Tgt Mass (CHM):
Injection Date : 12 Mar 18 12:08 pm +0800 Seq. Line : 40
Sample Name : YH5261-002-2 Location : P1-C-03
Acq. Operator : SYSTEM Inj : 1
Spec. Reported : MS Integration Inj Volume : 1 ul
Acq. Method : D:\LCMS03\Data\2018\20180312\20180312\1-POS-3MIN.M
Analysis Method : D:\LCMS03\Data\2018\20180312\20180312\1-POS-3MIN.M
Catalog No : CS-M2499 Batch#29045
Method Info : Mobile Phase: A: water(0.01%TFA) B:ACN(0.01%TFA)
Gradient: 5% to 95%B within 1.3 min
Flow Rate :1.8ml/min
Column :SunFire C18, 4.6*50mm,3.5um A-RP-186
Oven Temperature : 45C

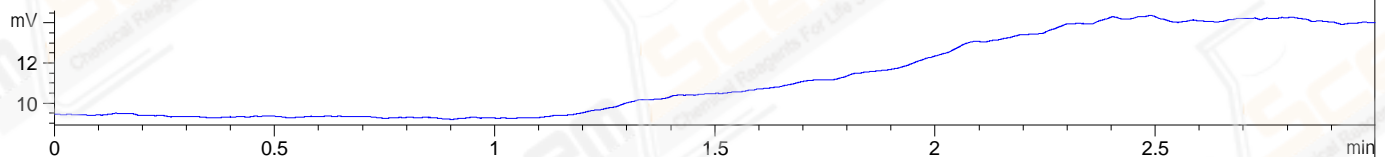
DAD1 A, Sig=214,4 Ref=off



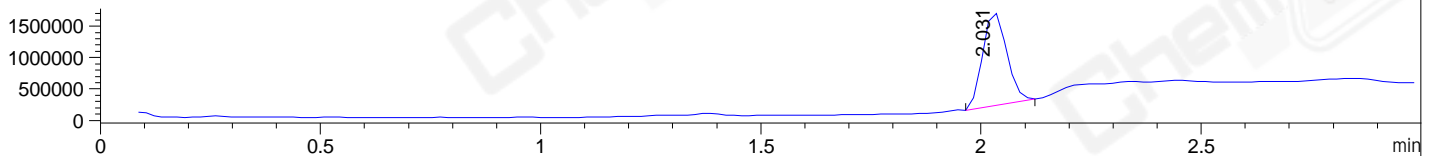
DAD1 B, Sig=254,4 Ref=off



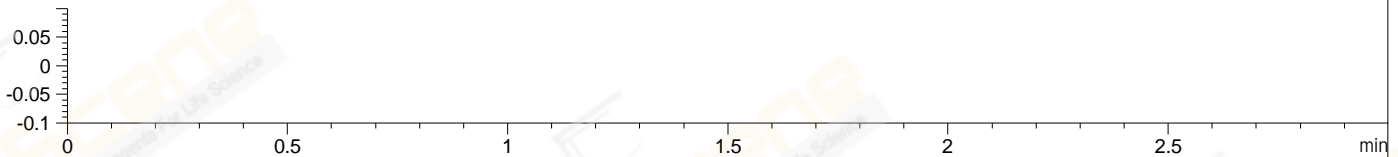
ELS1 A, ELSD Signal



MSD1 TIC, MS File ES-API, Pos, Scan, Frag: 70



Ion 1, MSD1 1, Target Mass 0 +H Positive, EIC=0.7:1.7



Integration Results for DAD1 A, Sig=214,4 Ref=off

RetTim	Width	Area	Height	Area%	MS (+)
1.83	0.01	0.59	0.70	0.01	105
1.92	0.02	108.09	80.76	2.61	105
2.00	0.02	4038.09	2952.85	97.34	213
2.12	0.01	0.23	0.32	0.01	105
2.14	0.01	0.39	0.49	0.01	105
2.18	0.01	0.47	0.49	0.01	105
2.24	0.01	0.39	0.47	0.01	105

Integration Results for DAD1 B, Sig=254,4 Ref=off

RetTim	Width	Area	Height	Area%	MS (+)
1.77	0.01	0.07	0.08	0.05	233
1.79	0.01	0.34	0.39	0.28	233
1.92	0.02	2.59	1.72	2.14	105
2.00	0.02	112.22	110.67	92.56	213
2.03	0.01	5.46	7.86	4.51	213
2.06	0.01	0.45	0.56	0.37	213
2.30	0.02	0.11	0.09	0.09	105

Integration Results for ELS1 A, ELSD Signal

RetTim	Width	Area	Height	Area%	MS (+)
--------	-------	------	--------	-------	--------

Integration Results for MSD1 TIC, MS File

RetTim	Width	Area	Height	Area%	MS (+)
2.03	0.06	5669648.50	1487653.00	100.00	213

Ret. Time: 2.03 <<<< POSITIVE SPECTRA >>>>

