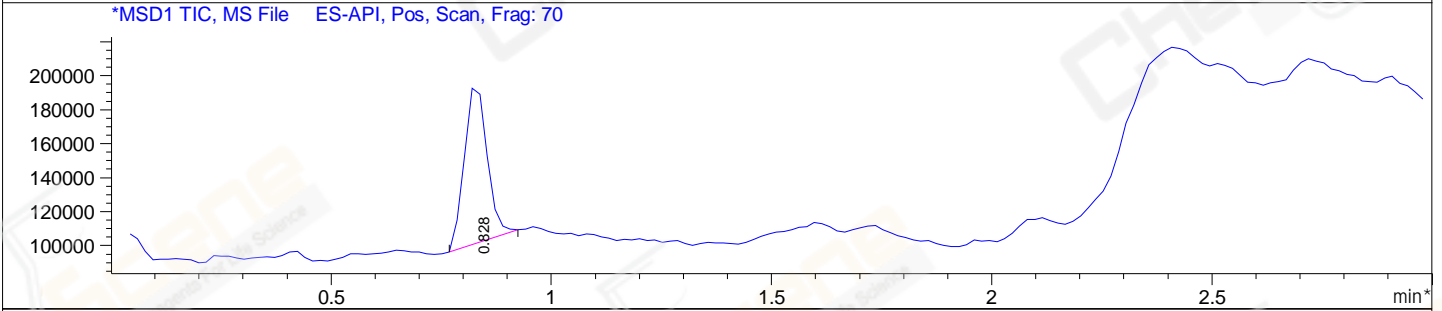
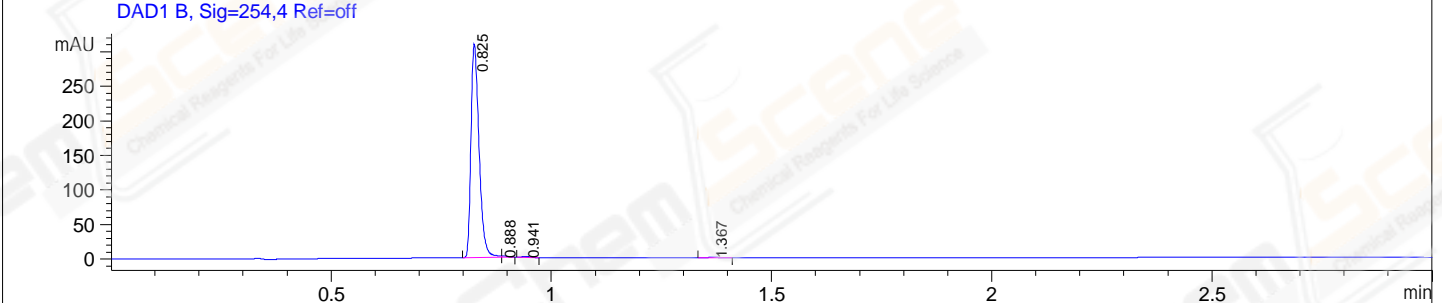
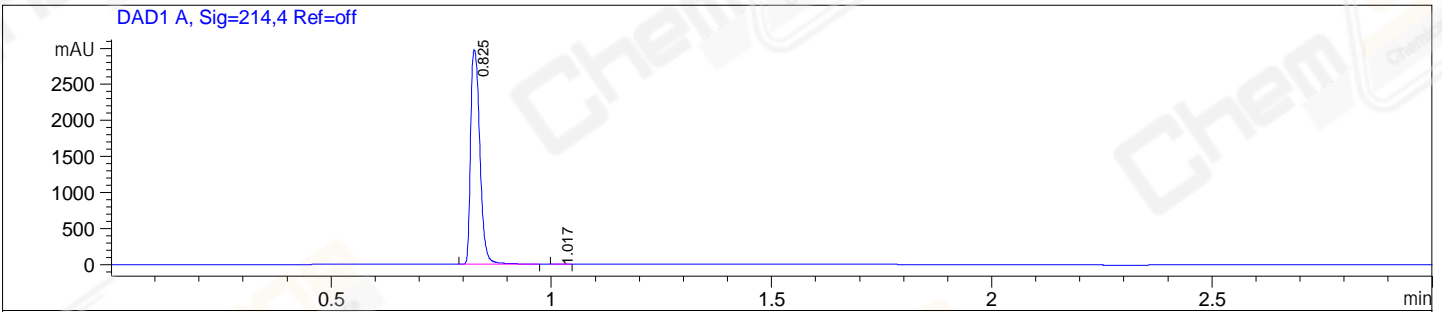


File E:\ChemStation\1\DATA\2023\2023-09\2023-09-18\BIZ2023-918-WLQ8-UPLC-MS-10-015076.D
 Injection Date : 18-Sep-23, 18:05:57 Tgt Mass(EZX) :
 Sample Name : BIZ2023-918-WLQ8 Location : P2-D-02
 Acq. Operator : LY_2278 Inj : 1
 Spec. Reported : MS Integration Inj Volume : 0.8 ul
 Acq. Method : E:\ChemStation\1\Methods\1-POS-UPLC3.0MIN(1.2)(150-1000).M
 Analysis Method : E:\CHEMSTATION\1\METHODS\1-POS-UPLC3.0MIN(1.2)(150-1000).M
 CAS NO. : 4233-96-9 WalkUp method: '1-POS-3MIN' Project: BIZ2023
 Method Info : Mobile Phase: A: water(0.01%TFA) B:ACN(0.01%TFA)
 Gradient: 5% to 95%B within 2.0 min
 Flow Rate :1.2ml/min
 Column :Shim-pack Scepter C18-120, 3.0*33mm,3um
 Oven Temperature : 45C



Integration Results for DAD1 A, Sig=214,4 Ref=off

RetTim	Width	Area	Height	Area%
0.83	0.02	4359.55	2972.87	99.97
1.02	0.03	1.22	0.76	0.03

Integration Results for DAD1 B, Sig=254,4 Ref=off

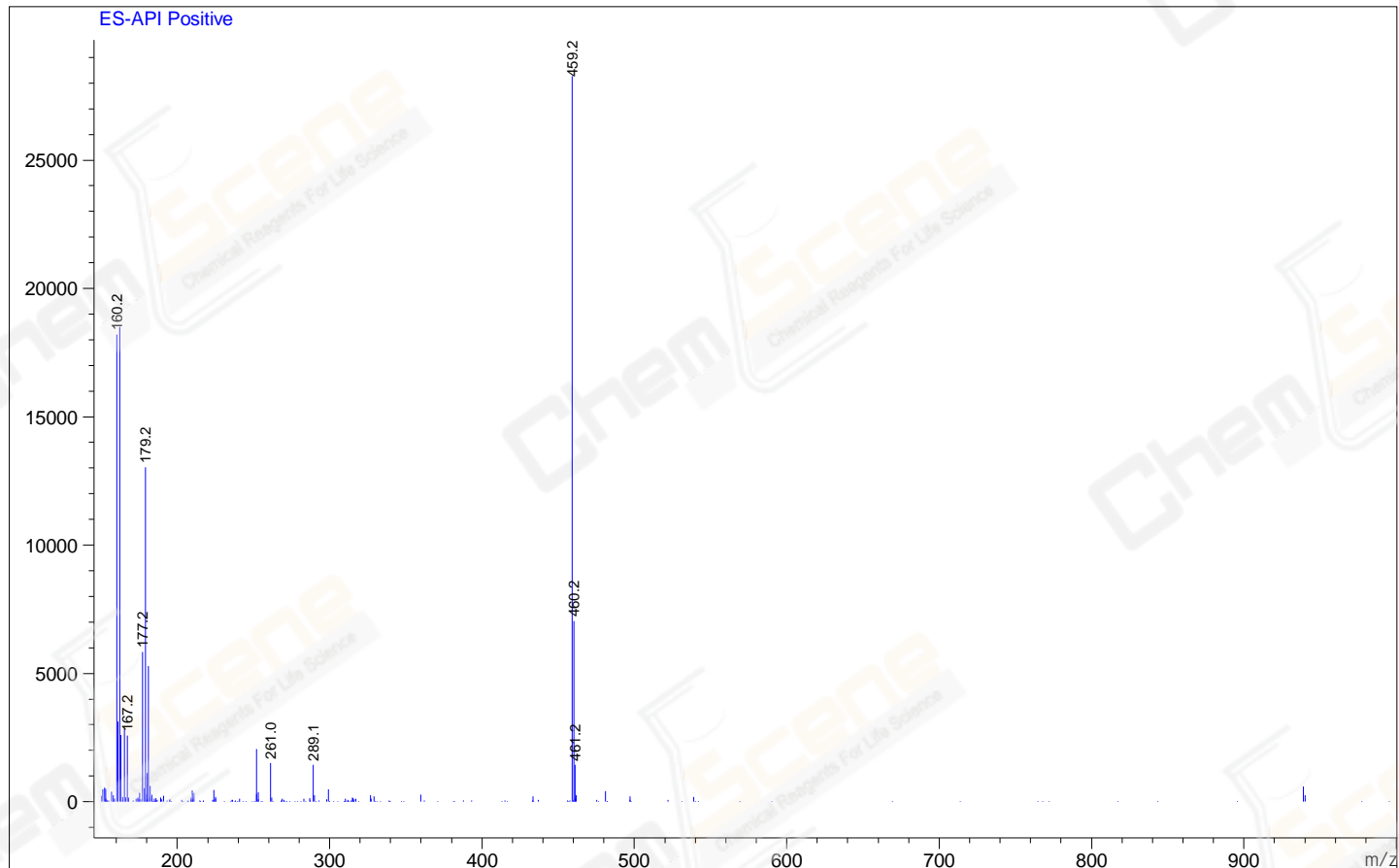
RetTim	Width	Area	Height	Area%
0.83	0.02	395.24	308.96	98.81
0.89	0.02	1.68	1.81	0.42
0.94	0.02	1.34	0.93	0.34
1.37	0.03	1.74	0.92	0.44

Integration Results for MSD1 TIC, MS File

RetTim	Width	Area	Height	Area%
0.83	0.06	335261.81	94861.77	100.00

Ret. Time: 0.83

<<<< POSITIVE SPECTRA >>>>



*** End of Report ***