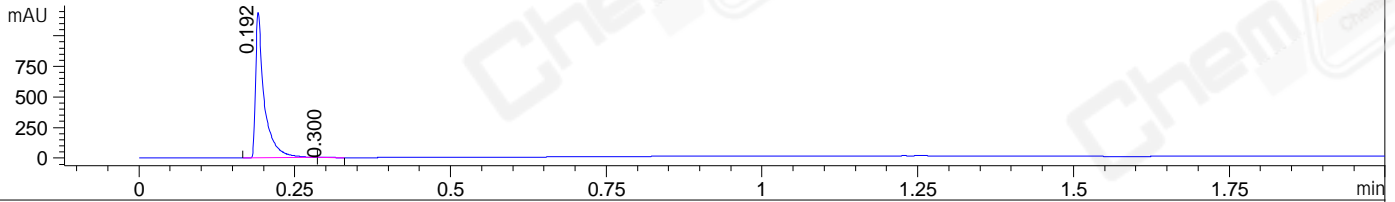
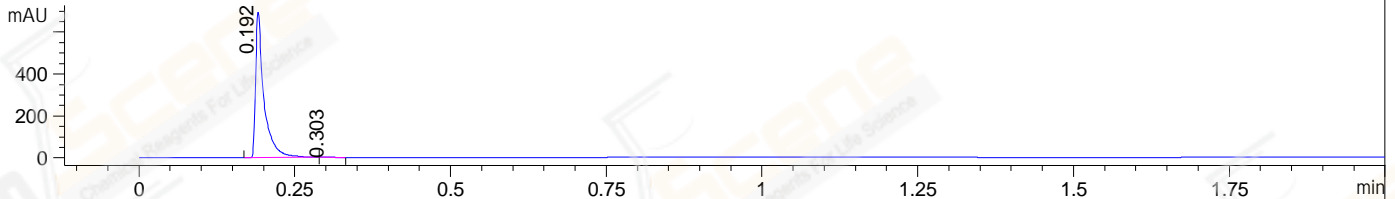


File ..12-05\CPK2022-D05-29075-UPLC-MS-03-045774.D Tgt Mass (EZ):
 Injection Date : 05-Dec-22, 14:27:33 Seq. Line : 0
 Sample Name : CPK2022-D05-29075 Location : P1-E-03
 Acq. Operator : LiYong Inj : 1
 Spec. Reported : MS Integration Inj Volume : 0.3 ul
 Acq. Method : E:\Chem32\1-Methods\1-POS-UPLC2.0MIN(0.8)(150-1000).M
 Analysis Method : E:\CHEM32\1\METHODS\1-POS-UPLC2.0MIN(0.8)(150-1000).M
 CAS NO. : 2353-33-5 WalkUp method: '1-POS-2MIN' Project: BIZ2022
 Method Info : Mobile Phase: A: water(0.01%TFA) B:ACN(0.01%TFA)
 Gradient: 5% to 95%B within 1.3 min
 Flow Rate : 0.8ml/min
 Column :Poroshell 120 EC- C18, 2.1*50mm,1.9um
 Oven Temperature : 45C

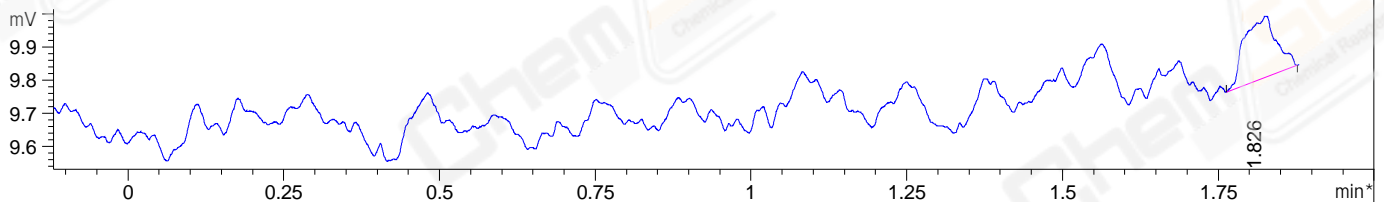
DAD1 A, Sig=214,4 Ref=off



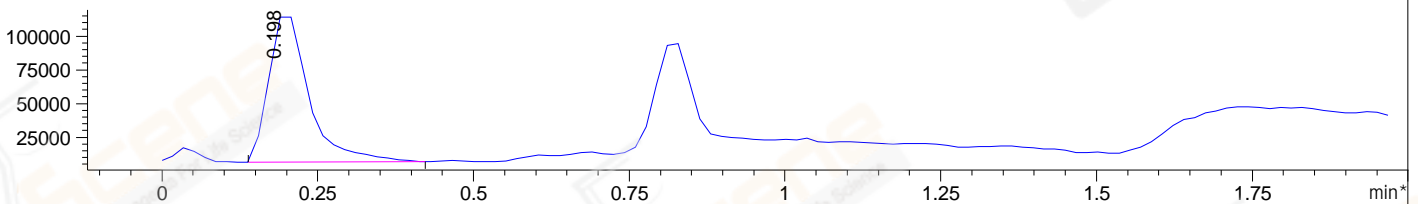
DAD1 B, Sig=254,4 Ref=off



*ELS1 A, ELSD Signal



*MSD1 TIC, MS File ES-API, Pos, Scan, Frag: 70



Integration Results for DAD1 A, Sig=214,4 Ref=off

RetTim	Width	Area	Height	Area%	MS(+)
0.19	0.01	1152.09	1176.93	99.74	457
0.30	0.02	3.03	2.03	0.26	457

Integration Results for DAD1 B, Sig=254,4 Ref=off

RetTim	Width	Area	Height	Area%	MS(+)
0.19	0.01	649.68	686.92	99.76	457
0.30	0.02	1.57	1.06	0.24	457

Integration Results for ELS1 A, ELSD Signal

RetTim	Width	Area	Height	Area%	MS(+)
1.83	0.05	0.68	0.19	100.00	159

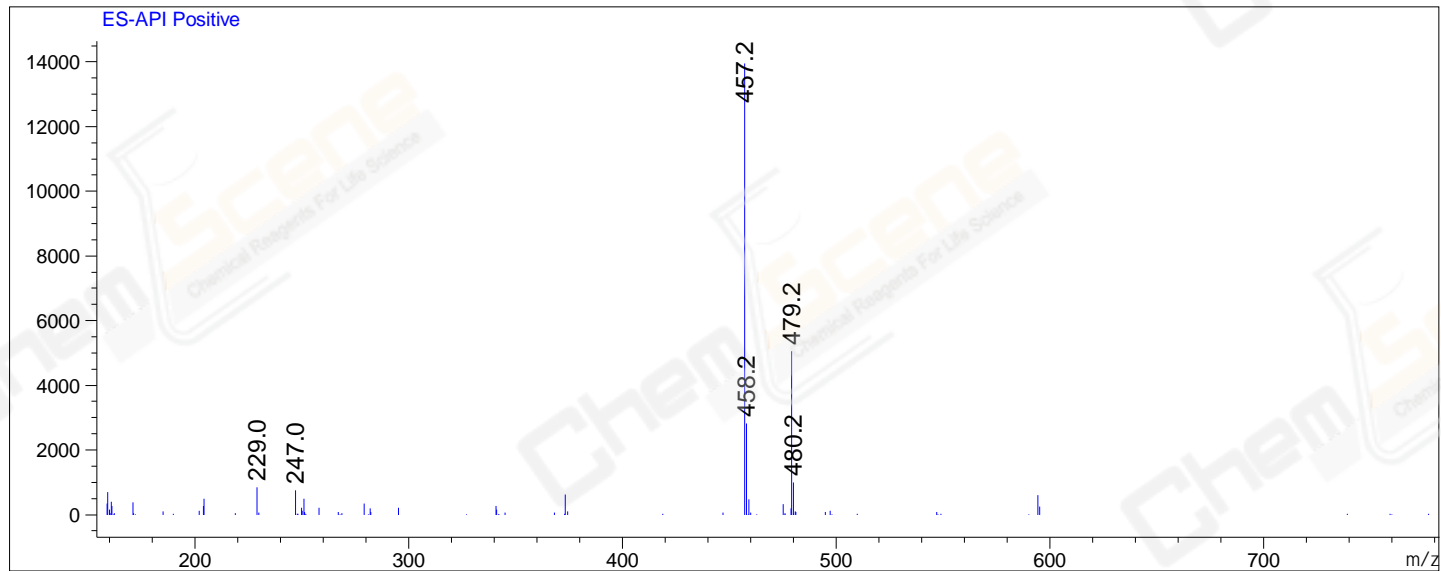
Integration Results for MSD1 TIC, MS File

0.20 0.07 486844.94 113175.37 100.00 457

RetTim	Width	Area	Height	Area%	MS(+)
0.20	0.07	486844.94	113175.37	100.00	457

Ret. Time: 0.20

<<<< POSITIVE SPECTRA >>>>



*** End of Report ***