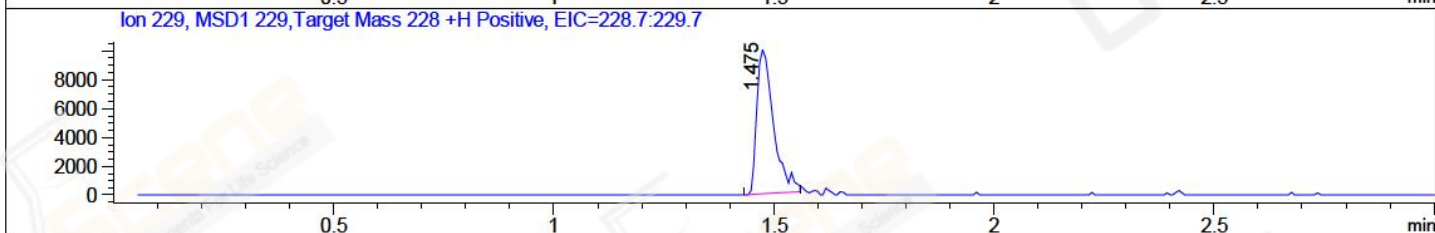
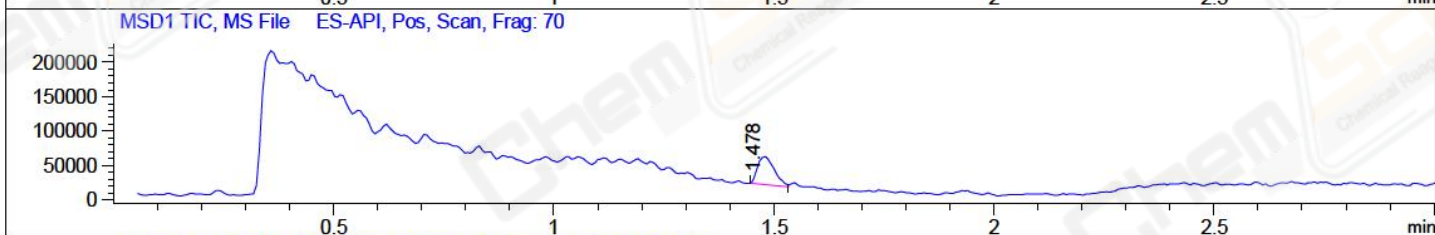
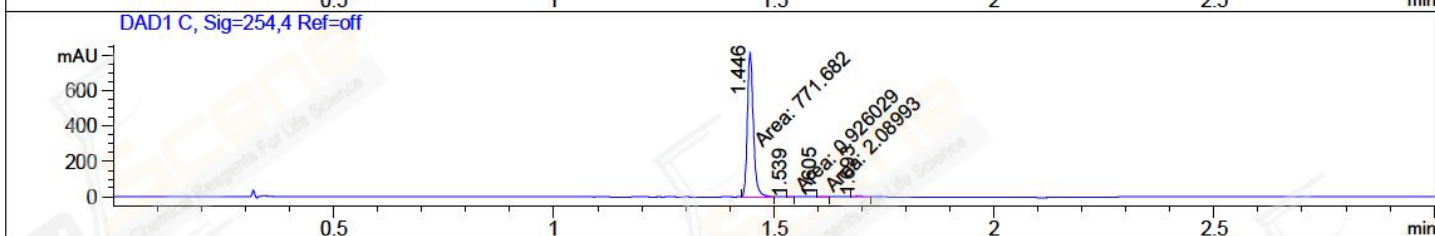
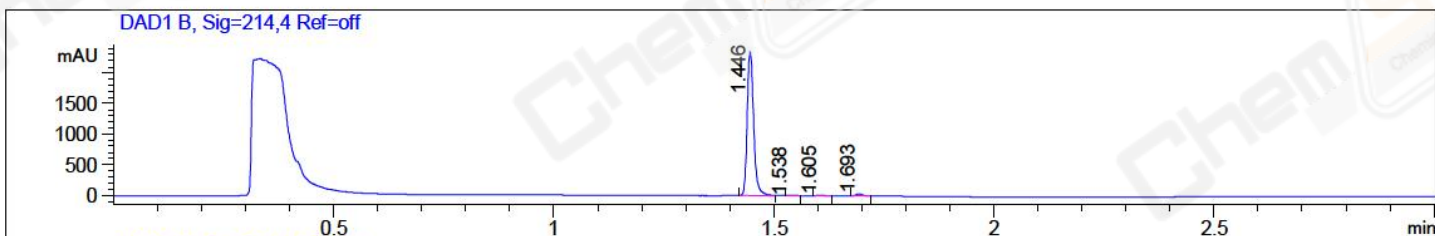


File ..HEM32\1\DATA\20180319\29\BIZ2018-319-WYQ4.D Tgt Mass (CHM):
 Injection Date : 20 Mar 18 9:15 am +0800 Seq. Line : 9
 Sample Name : BIZ2018-319-WYQ4 Location : P2-B-03
 Acq. Operator : LQ_1052 Inj : 1
 Spec. Reported : MS Integration Inj Volume : 3 ul
 Acq. Method : D:\chem32\1\DATA\20180319\29\1-POS-3MIN-1.M
 Analysis Method : D:\CHEM32\1\DATA\20180319\29\1-POS-3MIN-1.M
 Catalog No : CS-6305 Batch#29111 A-RP-189
 Method Info : Mobile Phase: A: water(0.01%TFA) B:ACN(0.01%TFA)
 Gradient: 5% to 95%B within 1.3 min
 Flow Rate :1.8ml/min
 Column :SunFire C18, 4.6*50mm,3.5um A-RP-186
 Oven Temperature : 45C



Integration Results for DAD1 B, Sig=214,4 Ref=off

RetTim	Width	Area	Height	Area%	MS (+)
1.45	0.02	2422.05	2355.84	98.05	157
1.54	0.02	7.77	7.00	0.31	157
1.61	0.01	9.86	11.60	0.40	157
1.69	0.01	30.62	32.49	1.24	157

Integration Results for DAD1 C, Sig=254,4 Ref=off

RetTim	Width	Area	Height	Area%	MS (+)
1.45	0.02	771.68	814.38	98.47	157
1.54	0.01	0.93	1.48	0.12	157
1.61	0.01	2.09	2.77	0.27	157
1.69	0.01	9.00	9.49	1.15	157

Integration Results for MSD1 TIC, MS File

RetTim	Width	Area	Height	Area%	MS (+)
1.48	0.04	107264.73	41196.18	100.00	157

Ret. Time: 1.48

<<<< POSITIVE SPECTRA >>>>

