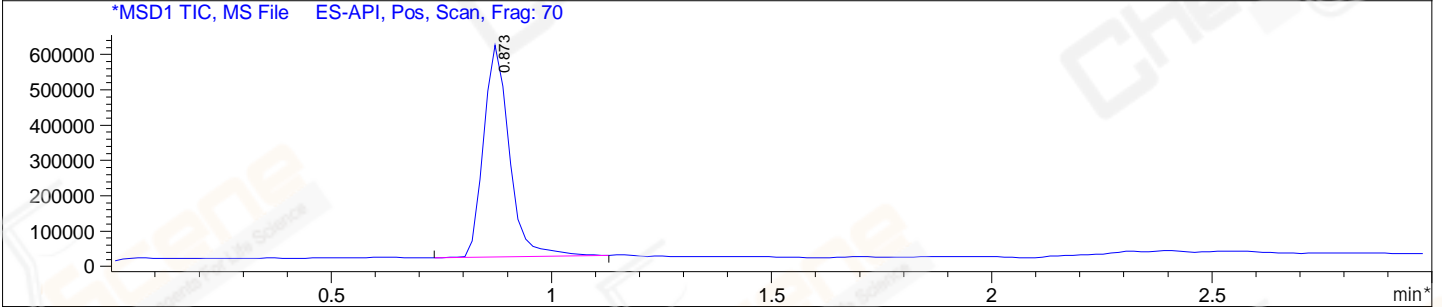
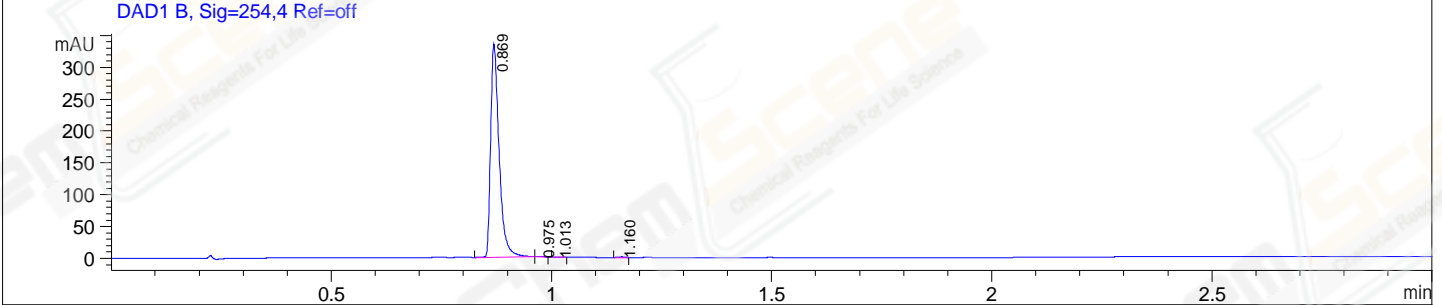
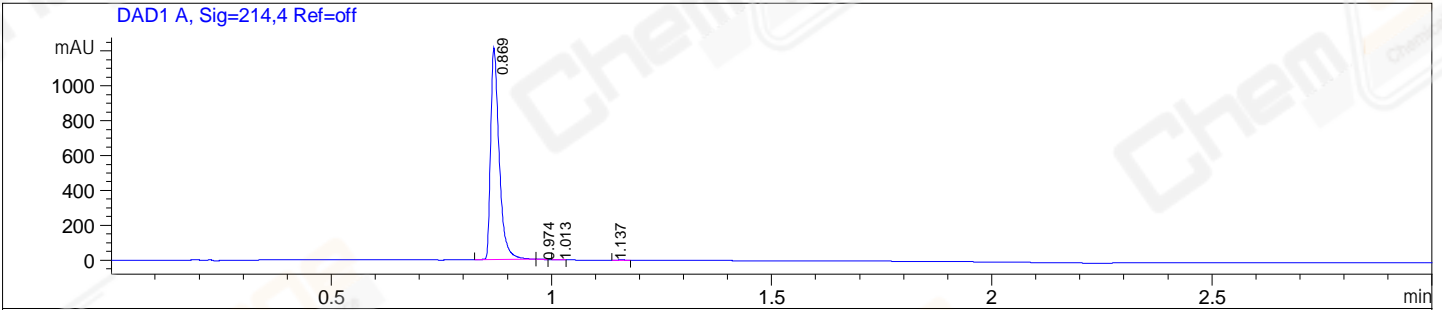


File E:\ChemStation\1\DATA\2024\2024-01\2024-01-17\CPK2024-117-29114-UPLC-MS-10-024812.D  
 Injection Date : 17-Jan-24, 14:36:24 Tgt Mass(EZX) :  
 Sample Name : CPK2024-117-29114 Location : P1-A-06  
 Acq. Operator : LY\_2278 Inj : 1  
 Spec. Reported : MS Integration Inj Volume : 0.8 ul  
 Acq. Method : E:\ChemStation\1\Methods\1-POS-UPLC3.0MIN(1.2)(150-1000).M  
 Analysis Method : E:\CHEMSTATION\1\METHODS\1-POS-UPLC3.0MIN(1.2)(150-1000).M  
 CAS NO. : 1610536-69-0 WalkUp method: '1-POS-3MIN' Project: CPK2024  
 Method Info : Mobile Phase: A: water(0.01%TFA) B:ACN(0.01%TFA)  
 Gradient: 5% to 95%B within 2.0 min  
 Flow Rate :1.2ml/min  
 Column :Shim-pack Scepter C18-120, 3.0\*33mm,3um  
 Oven Temperature : 45C



Integration Results for DAD1 A, Sig=214,4 Ref=off

RetTim	Width	Area	Height	Area%
0.87	0.02	1641.46	1213.39	99.68
0.97	0.01	1.51	1.81	0.09
1.01	0.01	1.20	1.44	0.07
1.14	0.02	2.48	0.02	0.15

Integration Results for DAD1 B, Sig=254,4 Ref=off

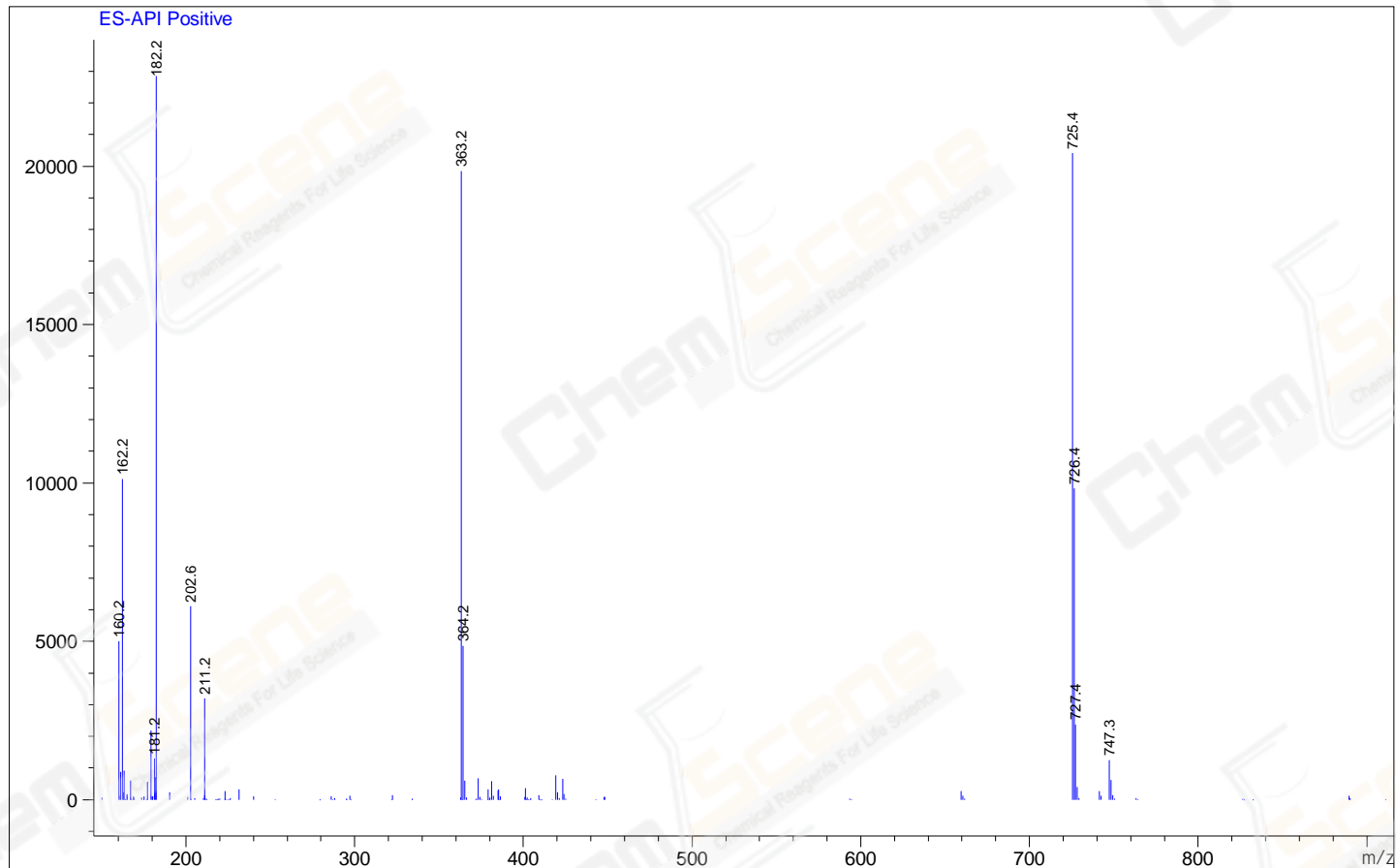
RetTim	Width	Area	Height	Area%
0.87	0.02	448.51	334.34	99.58
0.97	0.01	0.63	0.75	0.14
1.01	0.01	0.32	0.39	0.07
1.16	0.01	0.94	1.06	0.21

Integration Results for MSD1 TIC, MS File

RetTim	Width	Area	Height	Area%
0.87	0.06	2433757.00	598862.25	100.00

Ret. Time: 0.87

<<<< POSITIVE SPECTRA >>>>



\*\*\* End of Report \*\*\*