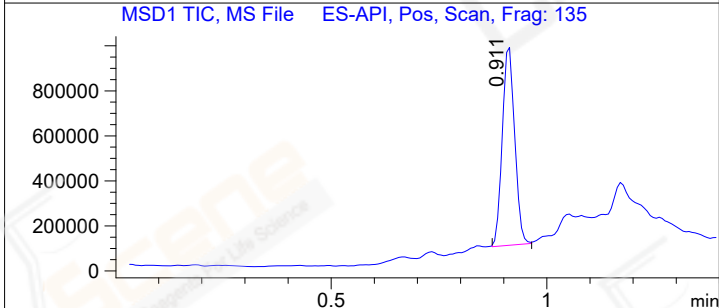
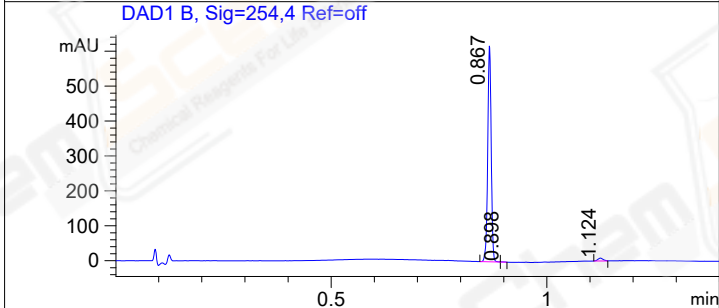
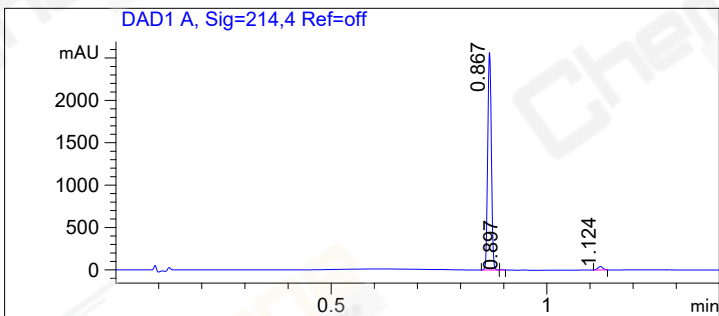


File ..-30-10\019-P1-C4-LJC202309180373-S1752378.D Tgt Mass (EZ):  
Injection Date : 19-Sep-23, 14:29:01 Seq. Line : 19  
Sample Name : LJC202309180373-S1752378 Location : P1-C-04  
Acq. Operator : LY Inj : 1  
Spec. Reported : MS Integration Inj Volume : 1 ul  
Acq. Method : D:\ChemStation\1\Data\20230919\20230919-3 2023-09-19 13-30-10\1-POS-1.4MIN(  
Analysis Method : D:\ChemStation\1\Data\20230919\20230919-3 2023-09-19 13-30-10\1-POS-1.4MIN(  
CAS NO. : 79208-84-7  
Method Info : Mobile Phase: A: Water (0.01%TFA) B: ACN (0.01%TFA)  
Gradient: 5% to 95%B within 0.5min  
Flow Rate: 2.4ml/min  
Column: Shim-pack Scepter\_C18-120\_3.0\*33mm,3.0µm  
Oven Temperature: 45 degree Celsius



Integration Results for DAD1 A, Sig=214,4 Ref=off

RetTim	Width	Area	Height	Area%	MS(+)
0.87	0.01	1509.76	2579.30	97.86	268
0.90	0.01	1.08	2.46	0.07	268
1.12	0.01	31.94	39.48	2.07	141

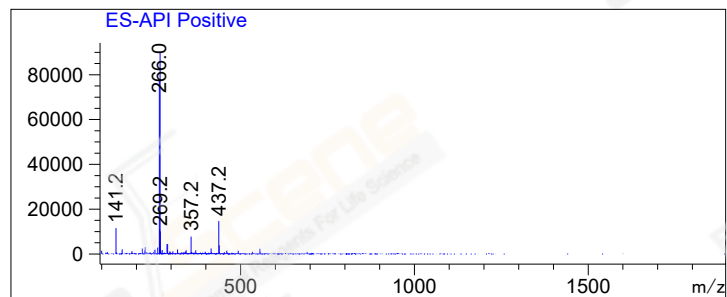
Integration Results for DAD1 B, Sig=254,4 Ref=off

RetTim	Width	Area	Height	Area%	MS(+)
0.87	0.01	345.23	621.38	97.92	268
0.90	0.01	0.36	0.56	0.10	268
1.12	0.01	6.98	8.23	1.98	141

Integration Results for MSD1 TIC, MS File

RetTim	Width	Area	Height	Area%	MS(+)
0.91	0.03	1762782.63	909286.56	100.00	268

Ret. Time: 0.91 &lt;&lt;&lt;&lt; POSITIVE SPECTRA &gt;&gt;&gt;&gt;



## Base Peak Ion Ratios:

## 2nd Largest Peak Ion Ratios:

Ion	Mass	Abundance	Ratio	Ion	Mass	Abundance	Ratio
A	268.00	89758	100.00	B	266.00	77348	100.00
A + 1	269.20	10067	11.22	B + 1	267.15	11027	14.26
A + 2	270.00	1363	1.52	B + 2	268.00	89758	116.04
A + 3	271.05	166	0.19	B + 3	269.20	10067	13.01
A + 4	272.20	560	0.62	B + 4	270.00	1363	1.76
A + 5	273.05	112	0.12	B + 5	271.05	166	0.22

\*\*\* End of Report \*\*\*