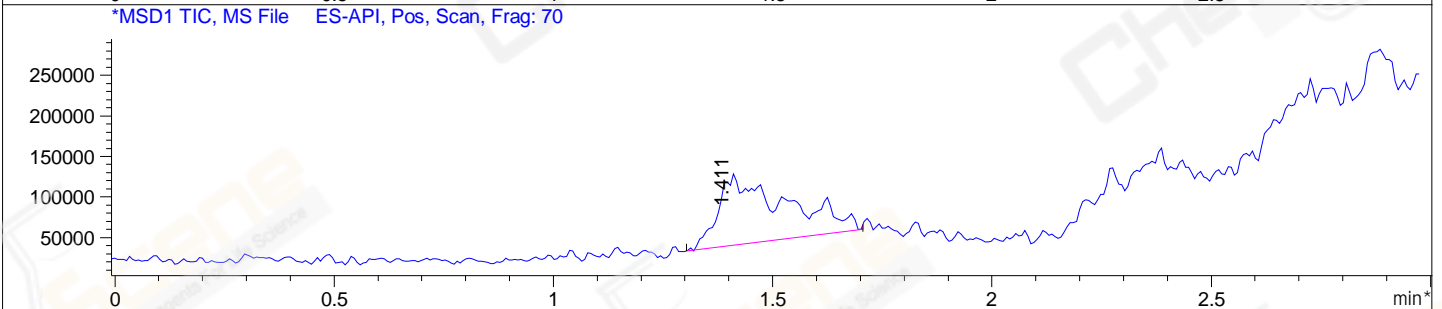
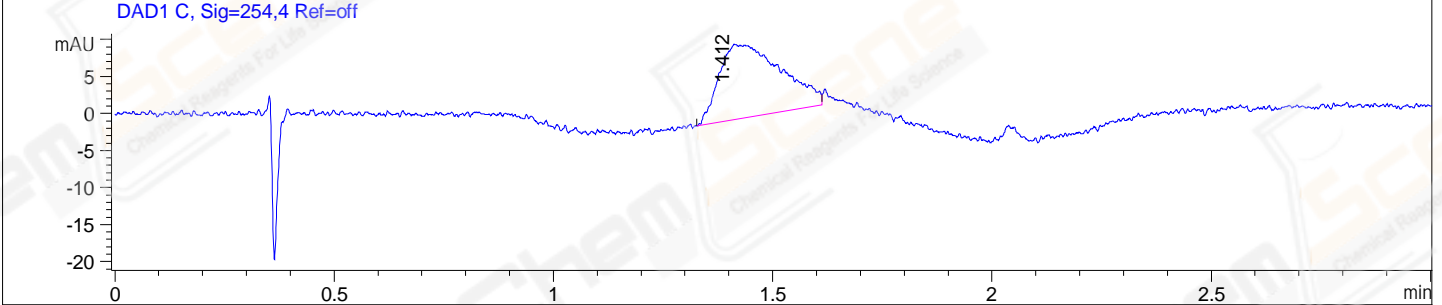
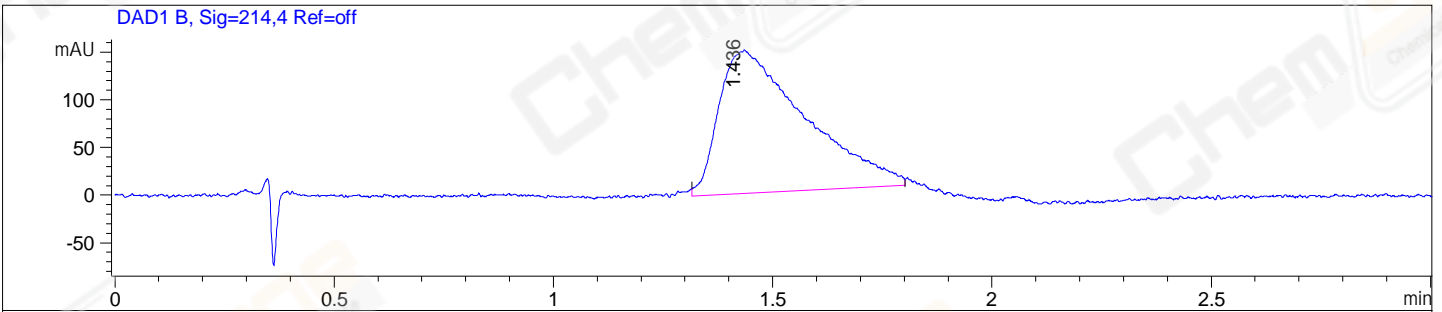


File ..9\2023-09-22\WZ29868-002-1-LCMS-02-034501.D Tgt Mass (EZX):  
 Injection Date : 22-Sep-23, 09:19:52 Seq. Line : 0  
 Sample Name : WZ29868-002-1 Location : P1-D-07  
 Acq. Operator : admin Inj : 1  
 Spec. Reported : MS Integration Inj Volume : 5 ul  
 Acq. Method : C:\Users\Public\Documents\ChemStation\1\Methods\1-POS-3MIN(100-1500).M  
 Analysis Method : F:\CHEM32\1\METHODS\1-POS-3MIN.M  
 CAS NO. : 1322711-38-5 WalkUp method: '1-POS-3MIN(100-1500)' Project: HY-940\_1  
 Method Info : Mobile Phase: A: water(0.01%TFA) B:ACN(0.01%TFA)  
 Gradient: 5% to 95%B within 1.3 min  
 Flow Rate :1.8ml/min  
 Column :Waters Xbridge C18, 4.6\*50mm,3.5um A-RP-940  
 Oven Temperature : 45C



Integration Results for DAD1 B, Sig=214,4 Ref=off

RetTim	Width	Area	Height	Area%	MS(+)
1.44	0.16	2060.49	150.58	100.00	159

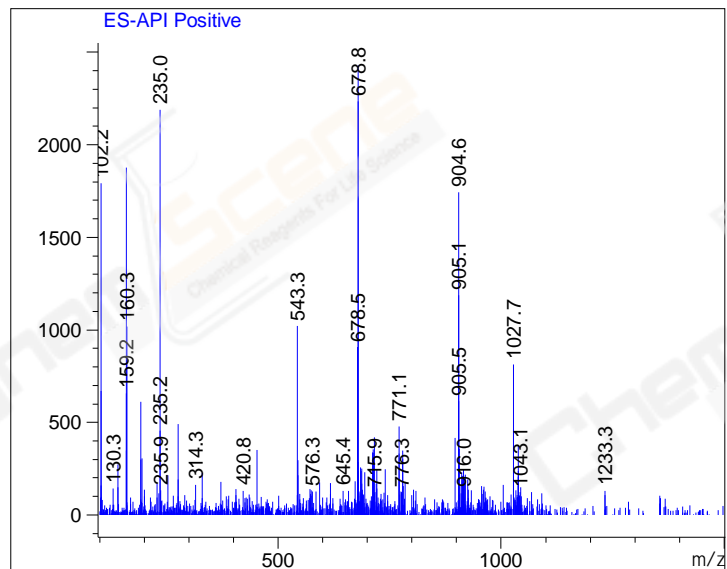
Integration Results for DAD1 C, Sig=254,4 Ref=off

RetTim	Width	Area	Height	Area%	MS(+)
1.41	0.11	97.91	10.17	100.00	679

Integration Results for MSD1 TIC, MS File

RetTim	Width	Area	Height	Area%	MS(+)
1.41	0.17	916398.00	89251.20	100.00	679

Ret. Time: 1.41 &lt;&lt;&lt;&lt; POSITIVE SPECTRA &gt;&gt;&gt;&gt;



\*\*\* End of Report \*\*\*