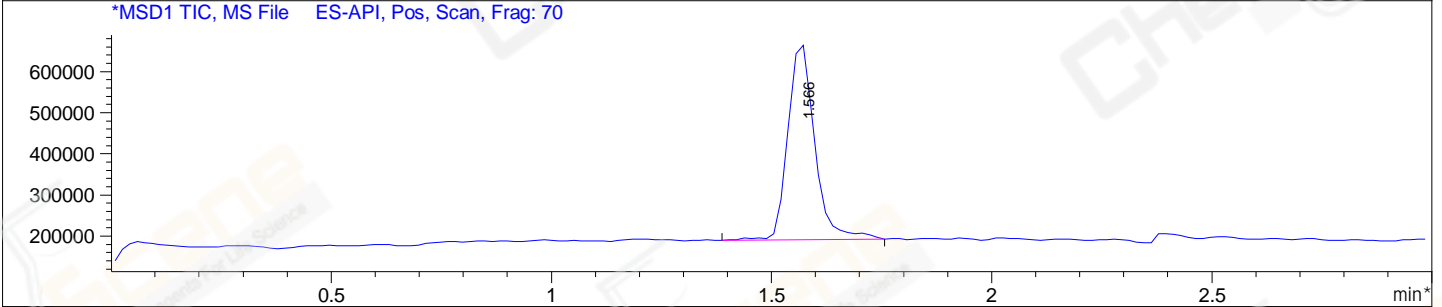
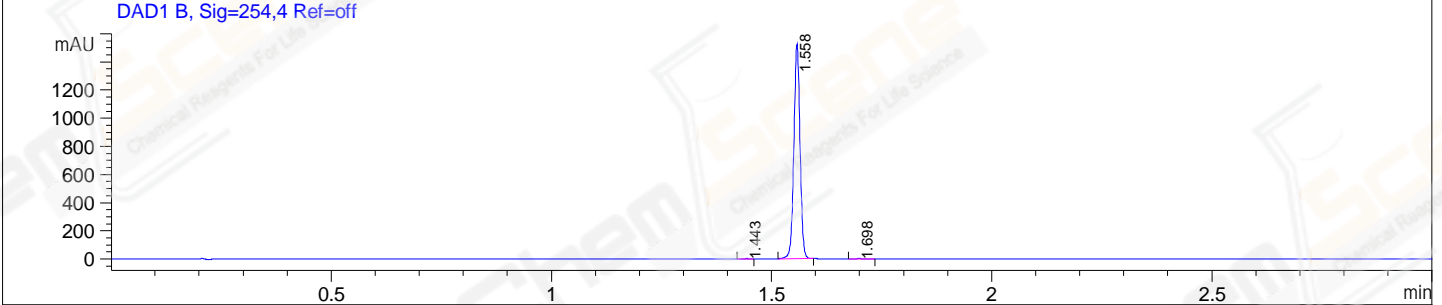
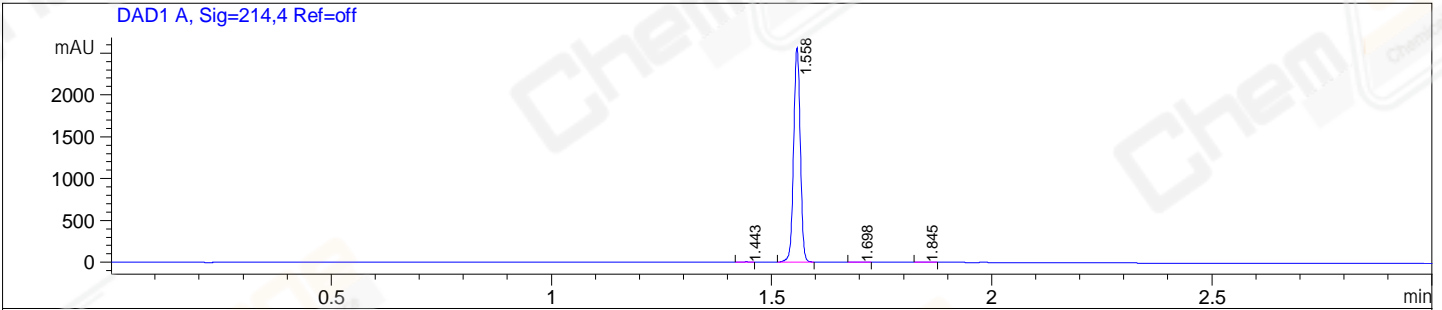


File E:\ChemStation\1\DATA\2023\2023-07\2023-07-12\LJC202307060197-UPLC-MS-10-007695.D
 Injection Date : 12-Jul-23, 13:36:15 Tgt Mass(EZX) :
 Sample Name : LJC202307060197 Location : P1-D-06
 Acq. Operator : LY_2278 Inj : 1
 Spec. Reported : MS Integration Inj Volume : 1 ul
 Acq. Method : E:\ChemStation\1\Methods\1-POS-UPLC3.0MIN(1.2)(0-2000).M
 Analysis Method : E:\CHEMSTATION\1\METHODS\1-POS-UPLC3.0MIN(1.2)(0-2000).M
 CAS NO. : 2170484-59-8 WalkUp method: '1-POS-3MIN(0-2000)' Project: LY2023
 Method Info : Mobile Phase: A: water(0.01%TFA) B:ACN(0.01%TFA)
 Gradient: 5% to 95%B within 2.0 min
 Flow Rate :1.2ml/min
 Column :Shim-pack Scepter C18-120, 3.0*33mm,3um
 Oven Temperature : 45C



Integration Results for DAD1 A, Sig=214,4 Ref=off

RetTim	Width	Area	Height	Area%
1.44	0.01	4.31	4.93	0.16
1.56	0.02	2688.06	2562.76	99.66
1.70	0.02	2.76	2.69	0.10
1.85	0.02	2.18	1.47	0.08

Integration Results for DAD1 B, Sig=254,4 Ref=off

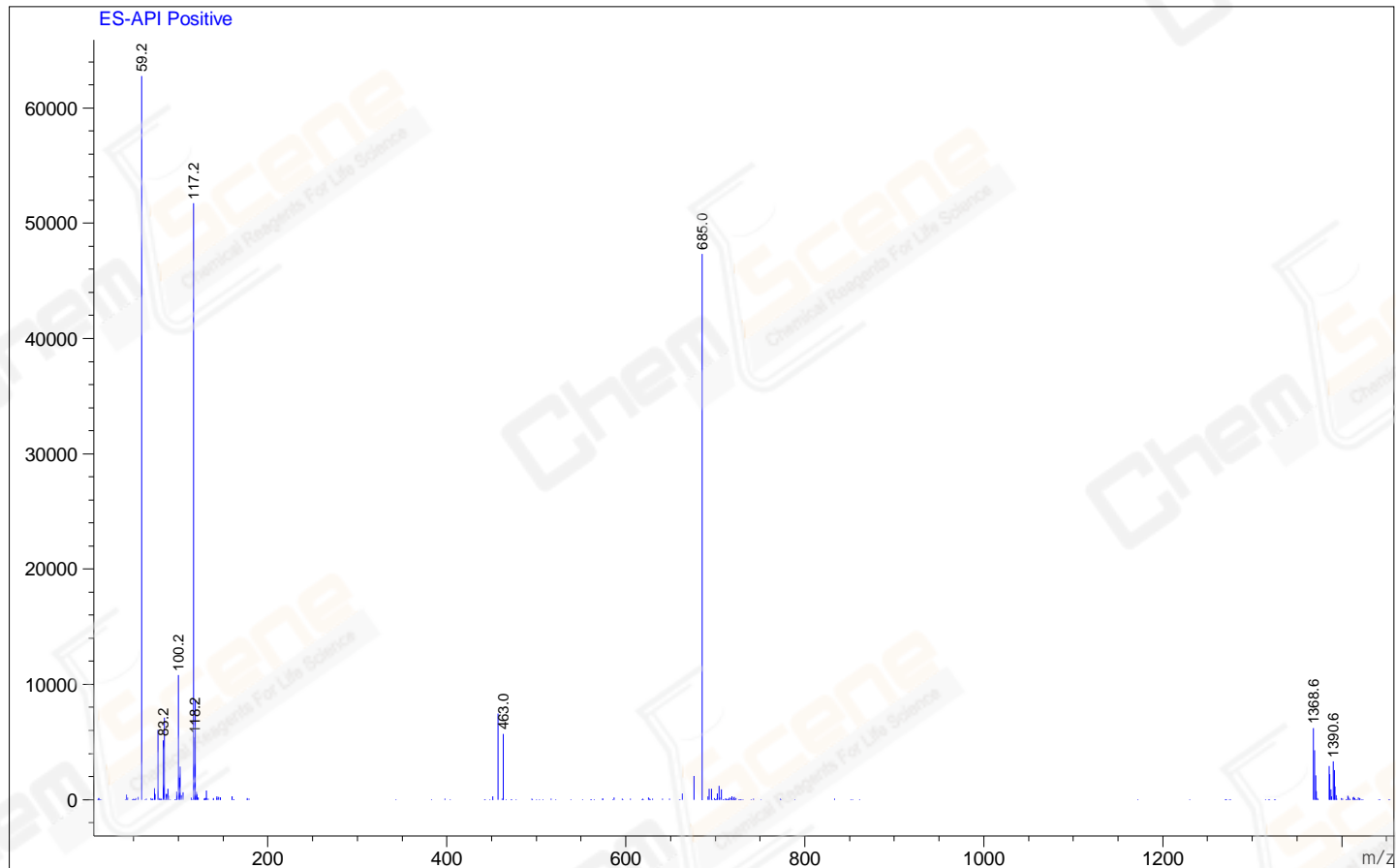
RetTim	Width	Area	Height	Area%
1.44	0.01	1.09	1.27	0.07
1.56	0.02	1480.89	1526.54	99.82
1.70	0.02	1.63	1.35	0.11

Integration Results for MSD1 TIC, MS File

RetTim	Width	Area	Height	Area%
1.57	0.06	2027432.13	484194.81	100.00

Ret. Time: 1.57

<<<< POSITIVE SPECTRA >>>>



*** End of Report ***