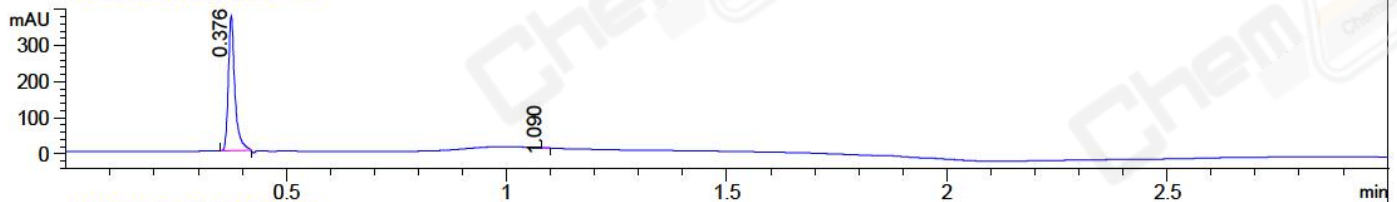


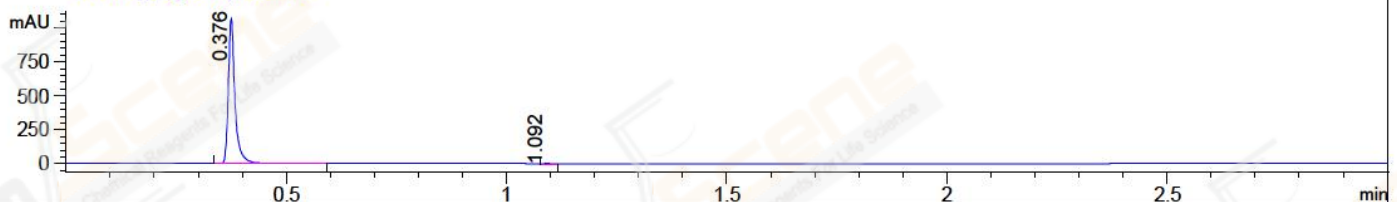
File ..EM32\1\DATA\20180404\68\BIZ2018-404-WYQ10.D Tgt Mass (CHM):

Injection Date : 4 Apr 18 8:05 pm +0800 Seq. Line : 15  
 Sample Name : BIZ2018-404-WYQ10 Location : P2-B-01  
 Acq. Operator : LQ\_1052 Inj : 1  
 Spec. Reported : MS Integration Inj Volume : 1 ul  
 Acq. Method : D:\chem32\1\DATA\20180404\68\1-POS-3MIN-1.M  
 Analysis Method : D:\CHEM32\1\DATA\20180404\68\1-POS-3MIN-1.M  
 Catalog No : CS-1951 Batch#29388 A-RP-189  
 Method Info : Mobile Phase: A: water(0.01%TFA) B:ACN(0.01%TFA)  
 Gradient: 5% to 95%B within 1.3 min  
 Flow Rate :1.8ml/min  
 Column :SunFire C18, 4.6\*50mm,3.5um A-RP-186  
 Oven Temperature : 45C

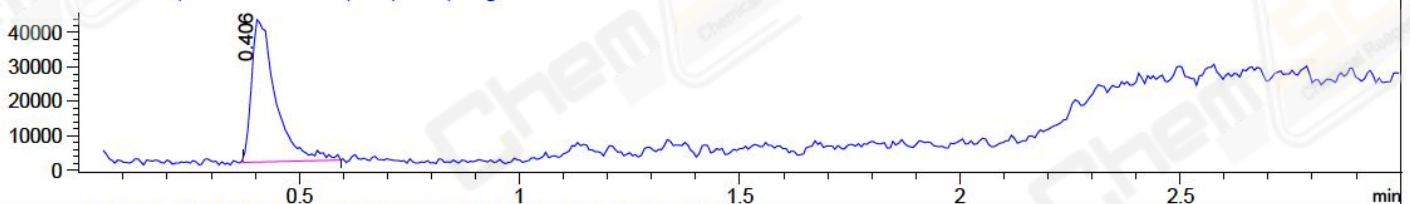
DAD1 B, Sig=214,4 Ref=off



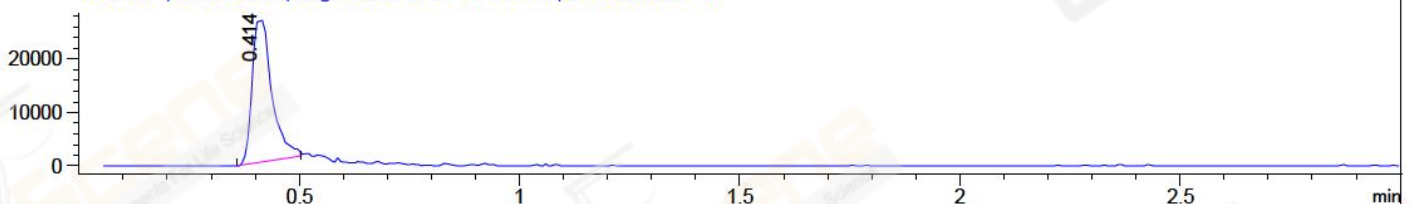
DAD1 C, Sig=254,4 Ref=off



MSD1 TIC, MS File ES-API, Pos, Scan, Frag: 70



Ion 259.1, MSD1 259.1, Target Mass 258.1 +H Positive, EIC=258.8:259.8



## Integration Results for DAD1 B, Sig=214,4 Ref=off

RetTim	Width	Area	Height	Area%	MS (+)
0.38	0.02	387.99	373.48	99.90	259
1.09	0.01	0.37	0.55	0.10	ND

## Integration Results for DAD1 C, Sig=254,4 Ref=off

RetTim	Width	Area	Height	Area%	MS (+)
0.38	0.02	1128.13	1069.80	99.90	259
1.09	0.02	1.11	1.09	0.10	ND

## Integration Results for MSD1 TIC, MS File

RetTim	Width	Area	Height	Area%	MS (+)
0.41	0.05	158492.38	42185.29	100.00	259

Ret. Time: 0.41 <<<< POSITIVE SPECTRA >>>>

