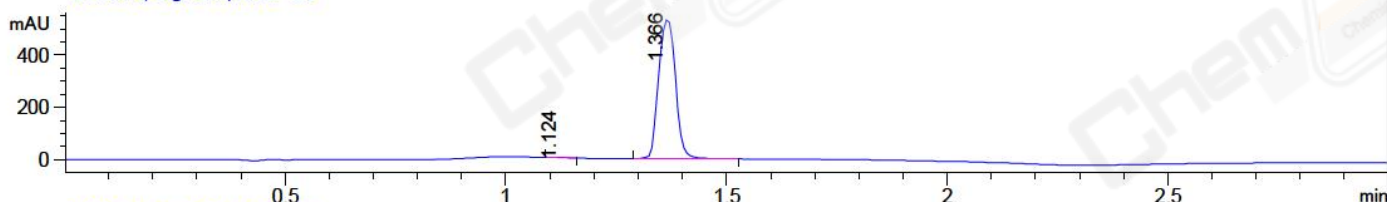
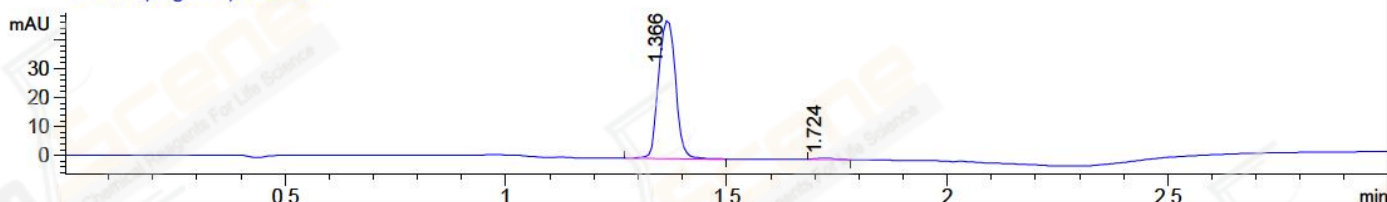


File D:\CHEM32\1\DATA\20180413\83\SIG10000008.D Tgt Mass (CHM):  
 Injection Date : 13 Apr 18 6:18 pm +0800 Seq. Line : 7  
 Sample Name : BIZ2018-413-WYQ9 Location : P1-A-05  
 Acq. Operator : LQ\_1052 Inj : 1  
 Spec. Reported : MS Integration Inj Volume : 1 ul  
 Acq. Method : D:\chem32\1\DATA\20180413\83\1-POS-3MIN-2000.M  
 Analysis Method : D:\CHEM32\1\DATA\20180413\83\1-POS-3MIN-2000.M  
 Catalog No : CS-3579 Batch#29505 A-RP-189  
 Method Info : Mobile Phase: A: water(0.01%TFA) B:ACN(0.01%TFA)  
 Gradient: 5% to 95%B within 1.3 min  
 Flow Rate :1.8ml/min  
 Column :SunFire C18, 4.6\*50mm,3.5um A-RP-186  
 Oven Temperature : 45C  
 Postive,MS:100-1000

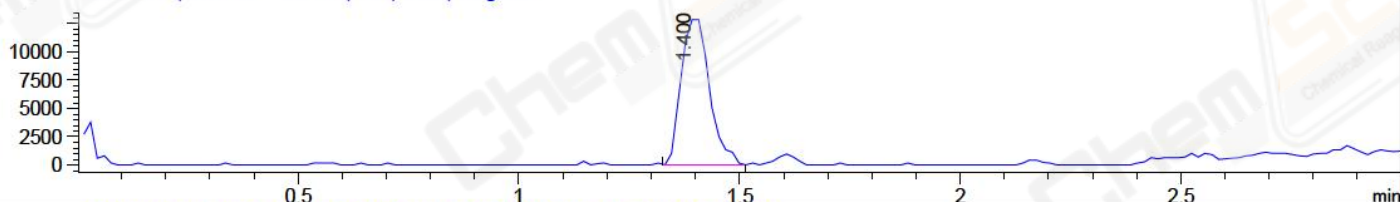
DAD1 B, Sig=214,4 Ref=off



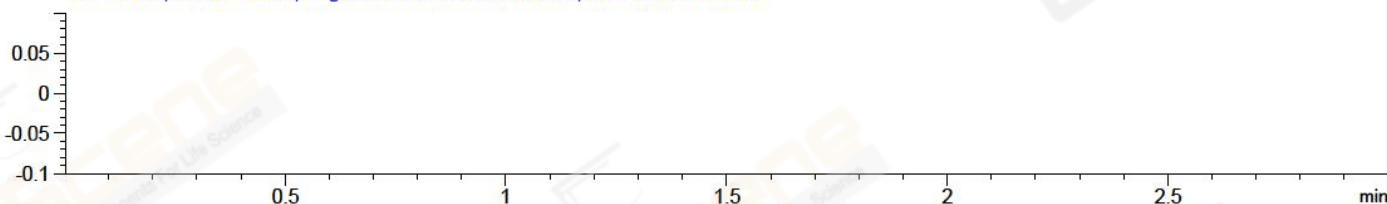
DAD1 C, Sig=254,4 Ref=off



MSD1 TIC, MS File ES-API, Pos, Scan, Frag: 50



Ion 1815.6, MSD1 1815.6, Target Mass 1814.6 +H Positive, EIC=1815.3:1816.3



## Integration Results for DAD1 B, Sig=214,4 Ref=off

RetTim	Width	Area	Height	Area%	MS (+)
1.12	0.04	7.33	2.74	0.52	ND
1.37	0.04	1410.42	535.59	99.48	ND

## Integration Results for DAD1 C, Sig=254,4 Ref=off

RetTim	Width	Area	Height	Area%	MS (+)
1.37	0.04	128.03	48.08	98.87	ND
1.72	0.05	1.47	0.51	1.13	ND

## Integration Results for MSD1 TIC, MS File

RetTim	Width	Area	Height	Area%	MS (+)
1.40	0.07	58036.43	13254.44	100.00	ND

HY-17586-20180413  
A-RP-189

=====

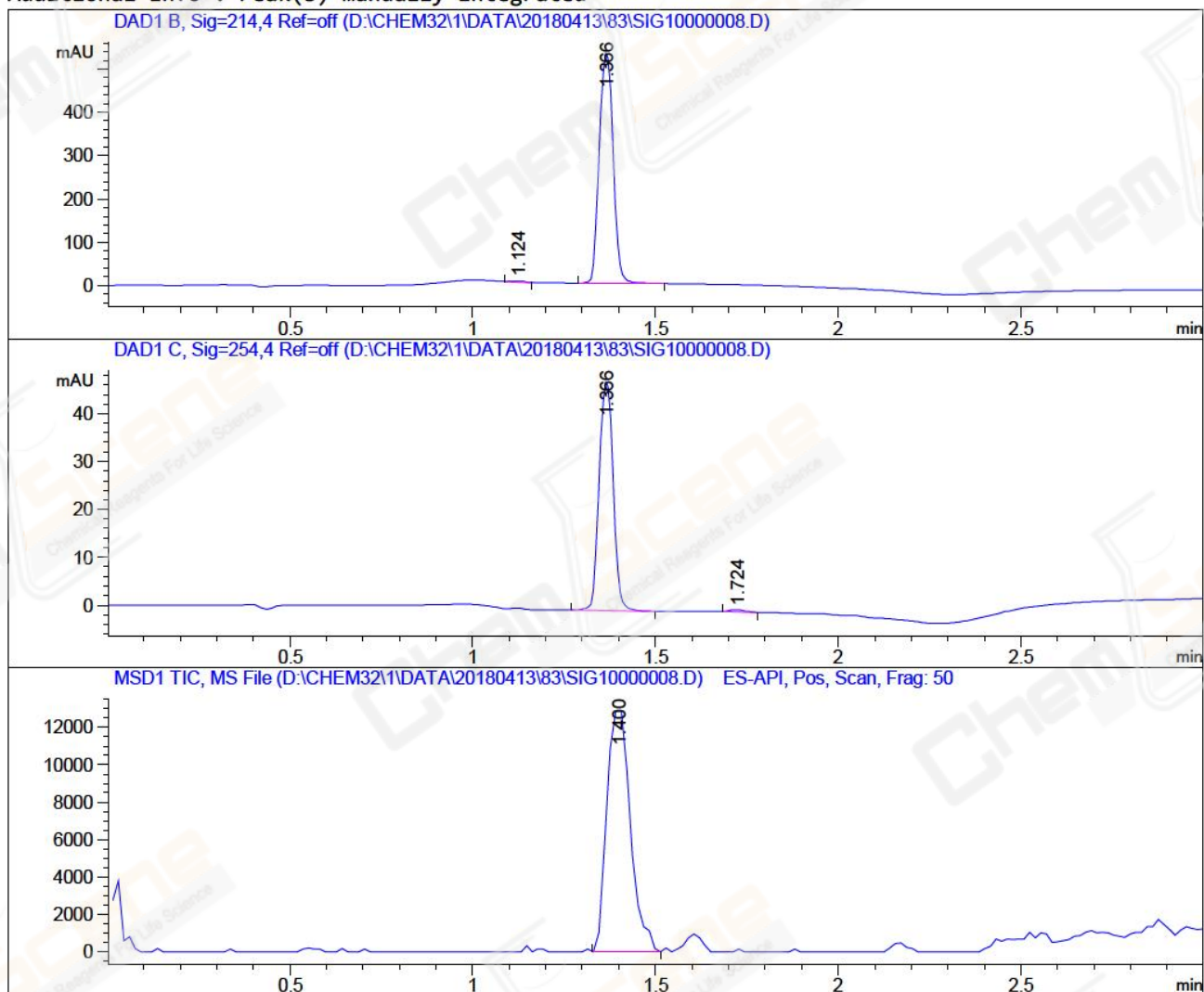
Acq. Operator	: LQ_1052	Seq. Line	: 7
Acq. Instrument	: LCMS-02	Location	: P1-A-05
Injection Date	: 4/13/2018 18:18:09	Inj	: 1
		Inj Volume	: 1.000 µl

Acq. Method : D:\CHEM32\1\DATA\20180413\83\1-POS-3MIN-2000.M  
Last changed : 4/13/2018 17:39:08 by LQ\_1052  
Analysis Method : D:\CHEM32\1\DATA\20180413\83\1-POS-3MIN-2000.M (Sequence Method)  
Last changed : 4/16/2018 15:31:25 by LQ\_1052  
(modified after loading)

Method Info : Mobile Phase: A: water(0.01%TFA) B:ACN(0.01%TFA)  
Gradient: 5% to 95%B within 1.3 min  
Flow Rate :1.8ml/min  
Column :SunFire C18, 4.6\*50mm,3.5um A-RP-186  
Oven Temperature : 45C  
Postive,MS:100-1000

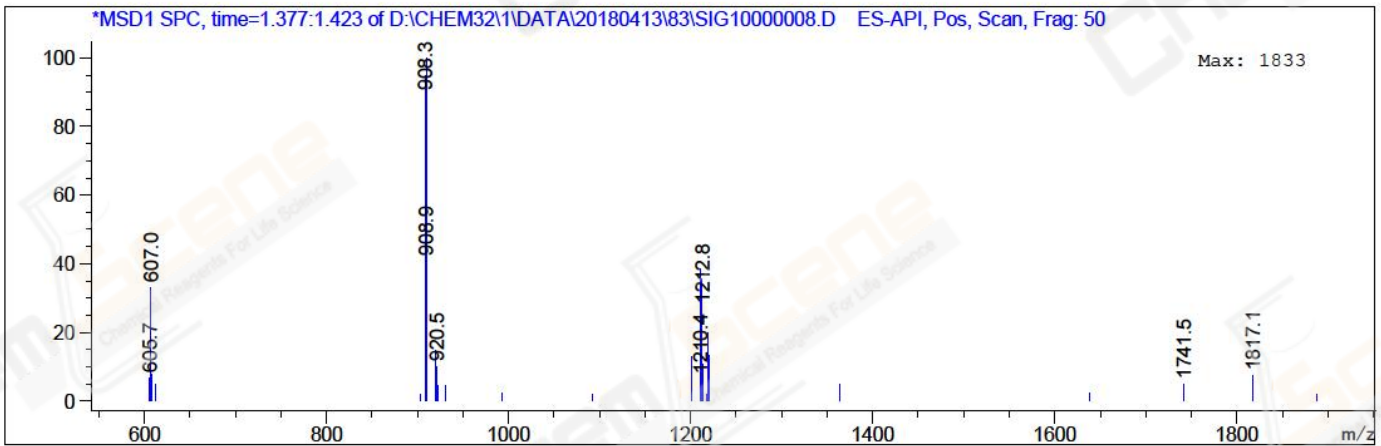
Catalog No : CS-3579 Batch#29505  
A-RP-189

Additional Info : Peak(s) manually integrated



MS Signal: MSD1 TIC, MS File, ES-API, Pos, Scan, Frag: 50  
Spectra averaged over upper half of peaks.  
Noise Cutoff: 1000 counts.  
Reportable Ion Abundance: > 10%.  
LC Signal: DAD1 B, Sig=214,4 Ref=off  
Peak matching window: 0.1 min

Retention Time (LC)	LC Area	Retention Time (MS)	MS Area	Mol. Weight or Ion
1.124	7	-	-	
1.366	1410	1.400	58036	909.35 I 908.35 I



\*\*\* End of Report \*\*\*