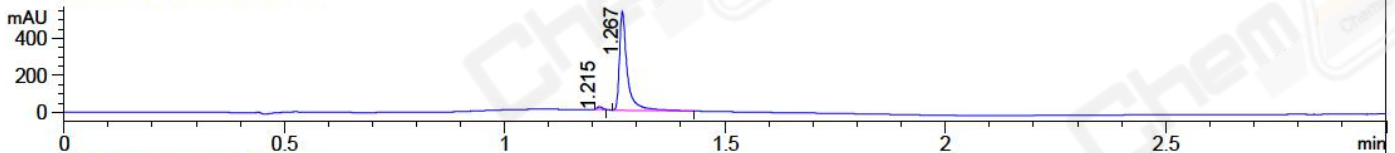
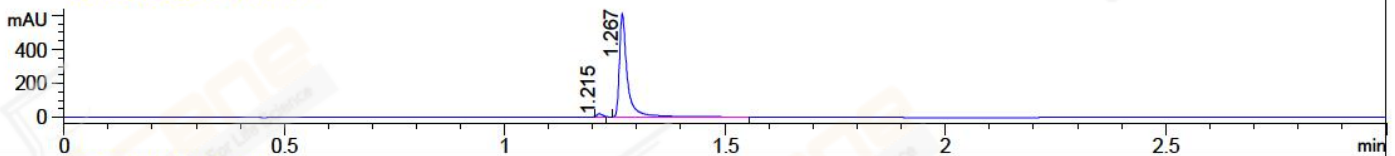


File ..2018\20180424\20180424-1\BIZ2018-424-WYQ4.D Tgt Mass (CHM):
Injection Date : 24 Apr 18 4:35 pm +0800 Seq. Line : 23
Sample Name : BIZ2018-424-WYQ4 Location : P2-A-08
Acq. Operator : SYSTEM Inj : 1
Spec. Reported : MS Integration Inj Volume : 1 ul
Acq. Method : D:\LCMS03\Data\2018\20180424\20180424-1\1-POS-3MIN.M
Analysis Method : D:\LCMS03\Data\2018\20180424\20180424-1\1-POS-3MIN.M
Catalog No : CS-2823 Batch#29652
Method Info : Mobile Phase: A: water(0.01%TFA) B:ACN(0.01%TFA)
Gradient: 5% to 95%B within 1.3 min
Flow Rate :1.8ml/min
Column :SunFire C18, 4.6*50mm,3.5um A-RP-186
Oven Temperature : 45C

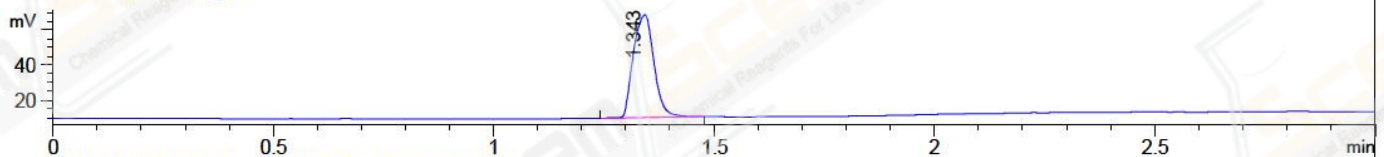
DAD1 A, Sig=214,4 Ref=off



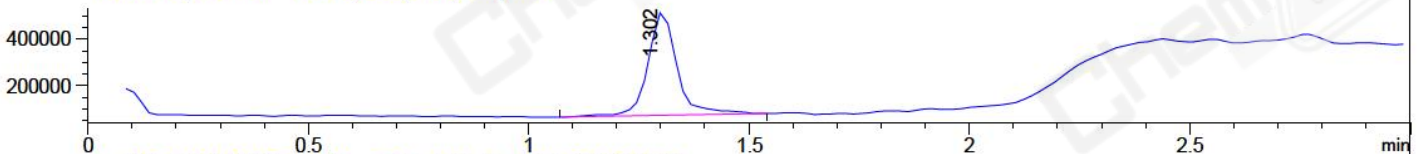
DAD1 B, Sig=254,4 Ref=off



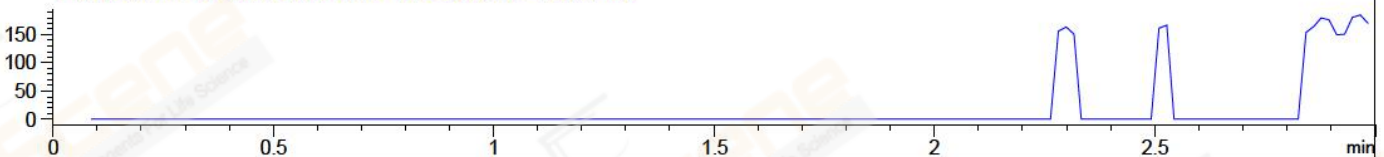
ELS1 A, ELSD Signal



MSD1 TIC, MS File ES-API, Pos, Scan, Frag: 70



Ion 745, MSD1 745, Target Mass 744 +H Positive, EIC=744.7:745.7



Integration Results for DAD1 A, Sig=214,4 Ref=off

RetTim	Width	Area	Height	Area%	MS (+)
1.21	0.01	12.94	15.87	1.94	303
1.27	0.02	654.11	531.97	98.06	343

Integration Results for DAD1 B, Sig=254,4 Ref=off

RetTim	Width	Area	Height	Area%	MS (+)
1.21	0.01	14.23	17.97	1.83	303
1.27	0.02	763.52	611.41	98.17	343

Integration Results for ELS1 A, ELSD Signal

RetTim	Width	Area	Height	Area%	MS (+)
1.34	0.05	191.99	58.76	100.00	343

Integration Results for MSD1 TIC, MS File

1.30 0.07 2021083.63 442028.41 100.00 343

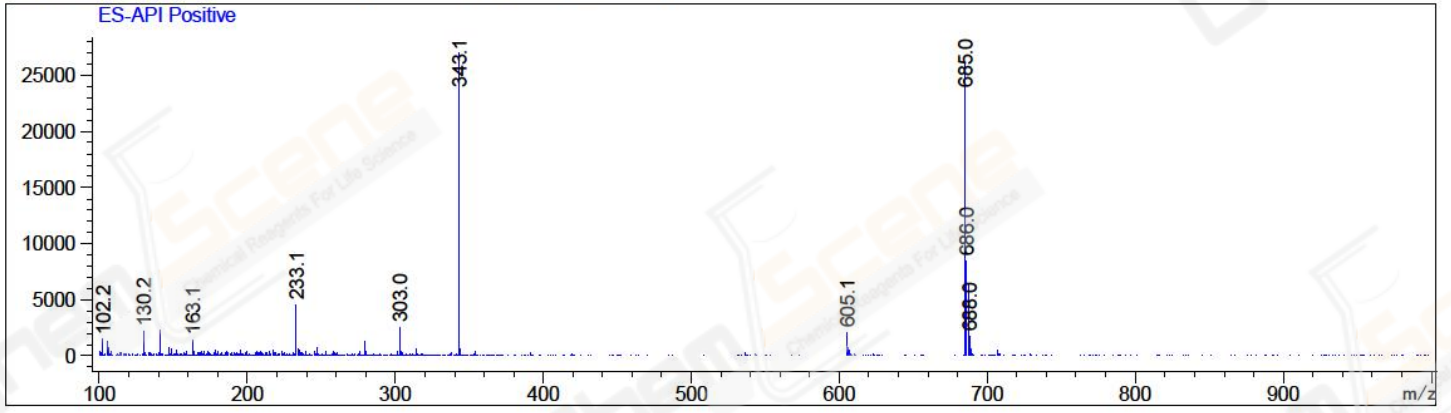


RetTim	Width	Area	Height	Area%	MS (+)
--------	-------	------	--------	-------	--------

-----|-----|-----|-----|-----|-----|

Ret. Time: 1.30

<<<< POSITIVE SPECTRA >>>>



*** End of Report ***