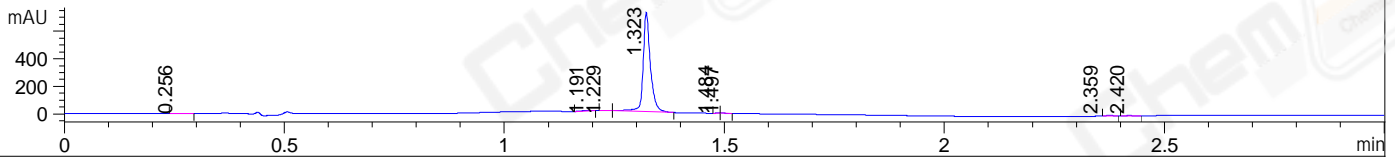
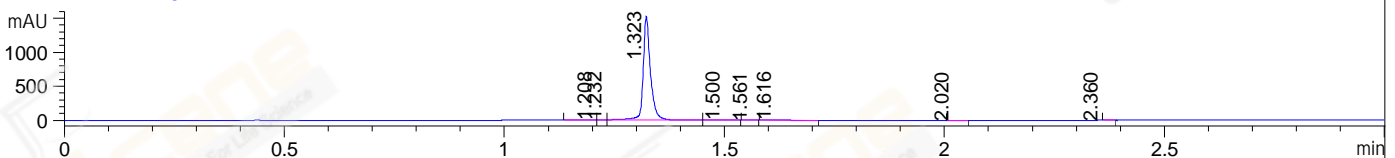


File ..ta\2018\20180507\20180507\BIZ2018-507-WYQ1.D Tgt Mass (CHM):
Injection Date : 7 May 18 11:39 pm +0800 Seq. Line : 90
Sample Name : BIZ2018-507-WYQ1 Location : P2-A-02
Acq. Operator : SYSTEM Inj : 1
Spec. Reported : MS Integration Inj Volume : 1 ul
Acq. Method : D:\LCMS03\Data\2018\20180507\20180507\1-POS-3MIN.M
Analysis Method : D:\LCMS03\Data\2018\20180507\20180507\1-POS-3MIN.M
CAS NO. : 856925-71-8
Method Info : Mobile Phase: A: water(0.01%TFA) B:ACN(0.01%TFA)
Gradient: 5% to 95%B within 1.3 min
Flow Rate :1.8ml/min
Column :SunFire C18, 4.6*50mm,3.5um A-RP-186
Oven Temperature : 45C

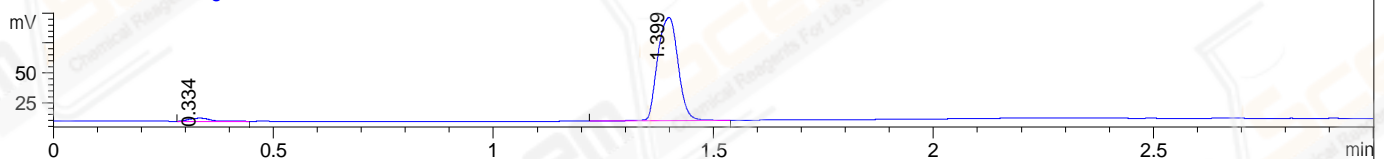
DAD1 A, Sig=214,4 Ref=off



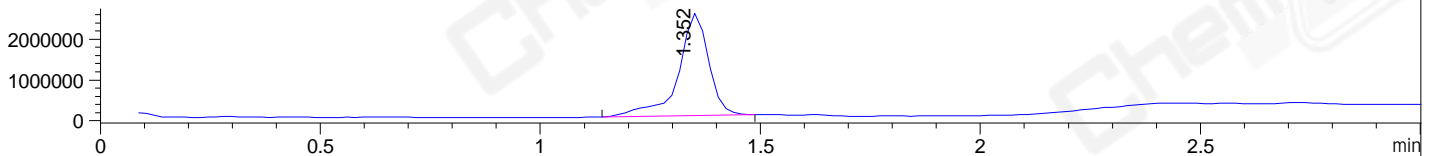
DAD1 B, Sig=254,4 Ref=off



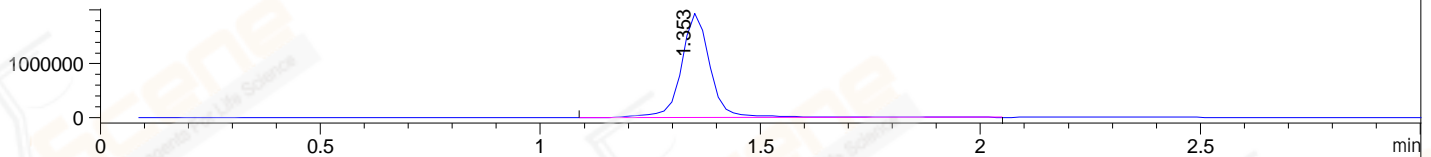
ELS1 A, ELSD Signal



MSD1 TIC, MS File ES-API, Pos, Scan, Frag: 70



Ion 293.1, MSD1 293.1, Target Mass 292.1 +H Positive, EIC=292.8:293.8



Integration Results for DAD1 A, Sig=214,4 Ref=off

RetTim	Width	Area	Height	Area%	MS (+)
0.26	0.01	1.67	1.74	0.20	159
1.19	0.03	4.65	2.25	0.55	311
1.23	0.01	2.28	2.68	0.27	311
1.32	0.02	822.26	716.49	98.01	293
1.48	0.01	0.14	0.27	0.02	293
1.50	0.02	0.63	0.58	0.07	293
2.36	0.02	5.06	0.26	0.60	233
2.42	0.02	2.31	1.99	0.27	233

Integration Results for DAD1 B, Sig=254,4 Ref=off

RetTim	Width	Area	Height	Area%	MS (+)
1.21	0.03	9.15	4.46	0.51	311
1.23	0.02	8.82	7.41	0.49	311
1.32	0.02	1785.79	1528.63	98.71	293
1.50	0.03	1.88	0.90	0.10	293
1.56	0.01	0.24	0.25	0.01	293
1.62	0.03	2.38	1.23	0.13	233

2.02	0.02	0.67	0.68	0.04	233
2.36	0.02	0.26	0.01	0.01	233

Integration Results for ELS1 A, ELSD Signal

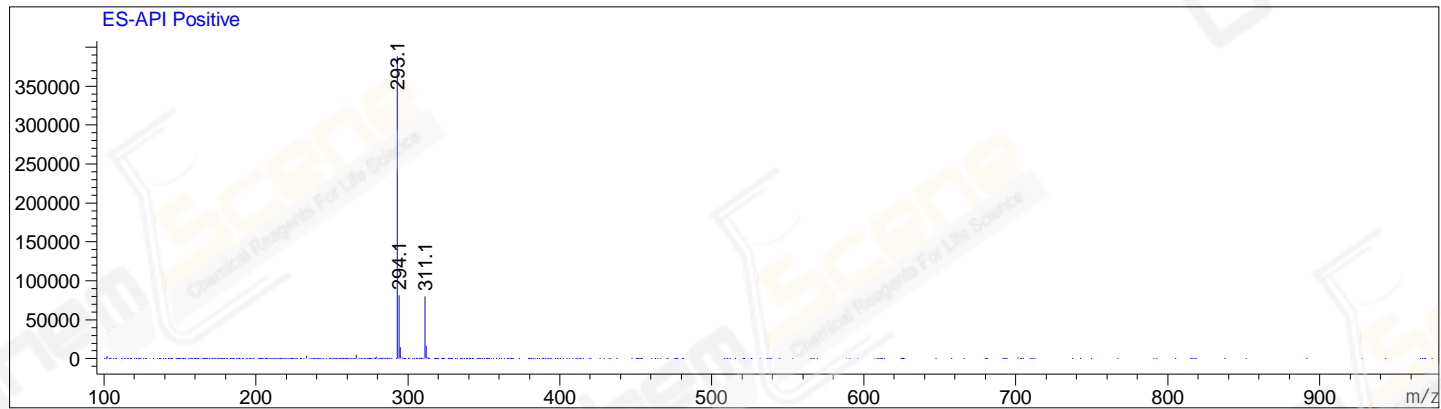
RetTim	Width	Area	Height	Area%	MS (+)
0.33	0.05	8.42	2.60	2.94	279
1.40	0.05	278.38	86.32	97.06	293

Integration Results for MSD1 TIC, MS File

RetTim	Width	Area	Height	Area%	MS (+)
1.35	0.07	11907116.00	2496153.00	100.00	293

Ret. Time: 1.35

<<<< POSITIVE SPECTRA >>>>



*** End of Report ***