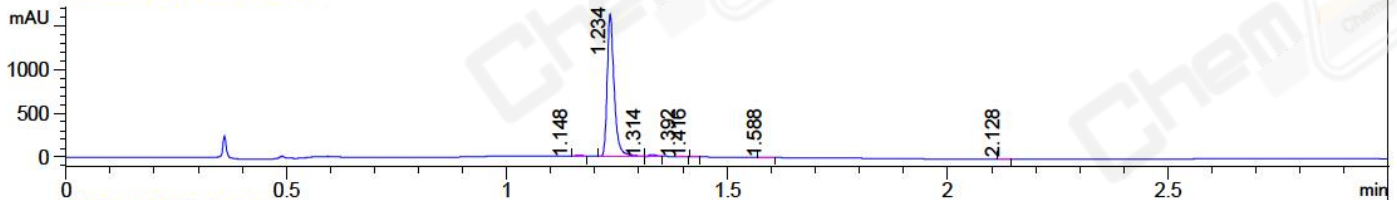
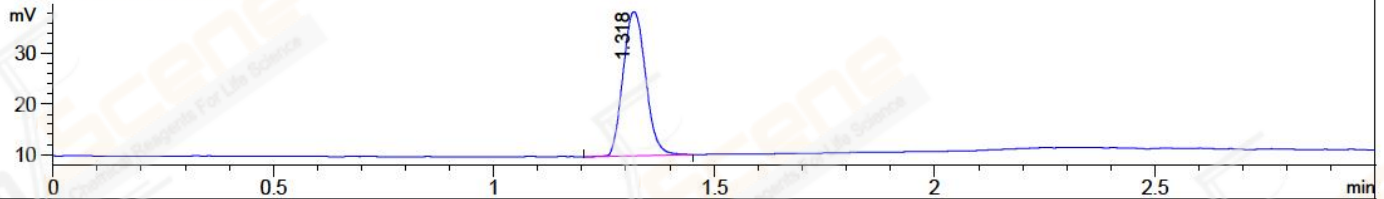


File ..a\2018\20180514\20180514\BIZ2018-514-WYQ7.D Tgt Mass (CHM):
Injection Date : 14 May 18 6:34 pm +0800 Seq. Line : 125
Sample Name : BIZ2018-514-WYQ7 Location : P2-D-01
Acq. Operator : SYSTEM Inj : 1
Spec. Reported : MS Integration Inj Volume : 3 ul
Acq. Method : D:\LCMS03\Data\2018\20180514\20180514\1-POS-3MIN.M
Analysis Method : D:\LCMS03\Data\2018\20180514\20180514\1-POS-3MIN.M
Catalog No : CS-0034229 Batch#30029
Method Info : Mobile Phase: A: water(0.01%TFA) B:ACN(0.01%TFA)
Gradient: 5% to 95%B within 1.3 min
Flow Rate :1.8ml/min
Column :SunFire C18, 4.6*50mm,3.5um A-RP-186
Oven Temperature : 45C

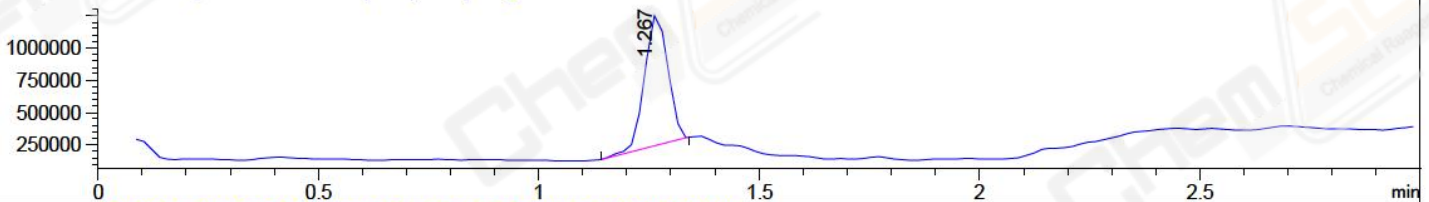
DAD1 A, Sig=214,4 Ref=off



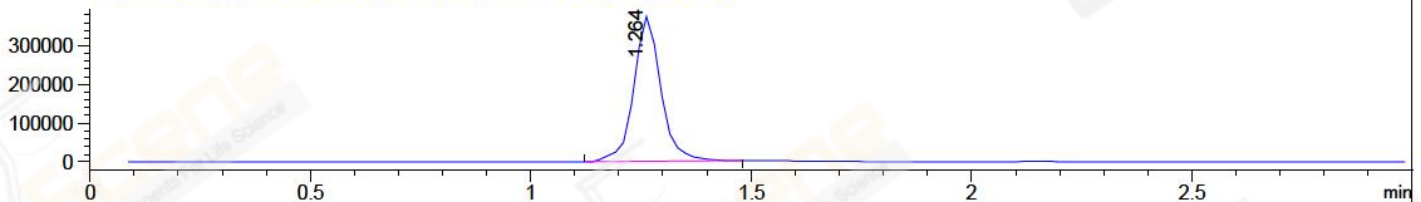
ELS1 A, ELSD Signal



MSD1 TIC, MS File ES-API, Pos, Scan, Frag: 70



Ion 342.1, MSD1 342.1, Target Mass 341.1 +H Positive, EIC=341.8:342.8



Integration Results for DAD1 A, Sig=214,4 Ref=off

| RetTim | Width | Area | Height | Area% | MS (+) |
|--------|-------|---------|---------|-------|--------|
| 1.15 | 0.02 | 7.11 | 0.59 | 0.39 | 344 |
| 1.23 | 0.02 | 1794.10 | 1630.01 | 98.02 | 342 |
| 1.31 | 0.02 | 21.80 | 0.41 | 1.19 | 342 |
| 1.39 | 0.01 | 1.86 | 2.31 | 0.10 | 462 |
| 1.42 | 0.01 | 1.91 | 0.58 | 0.10 | 464 |
| 1.59 | 0.02 | 1.90 | 1.58 | 0.10 | 233 |
| 2.13 | 0.02 | 1.70 | 1.76 | 0.09 | 233 |

Integration Results for ELS1 A, ELSD Signal

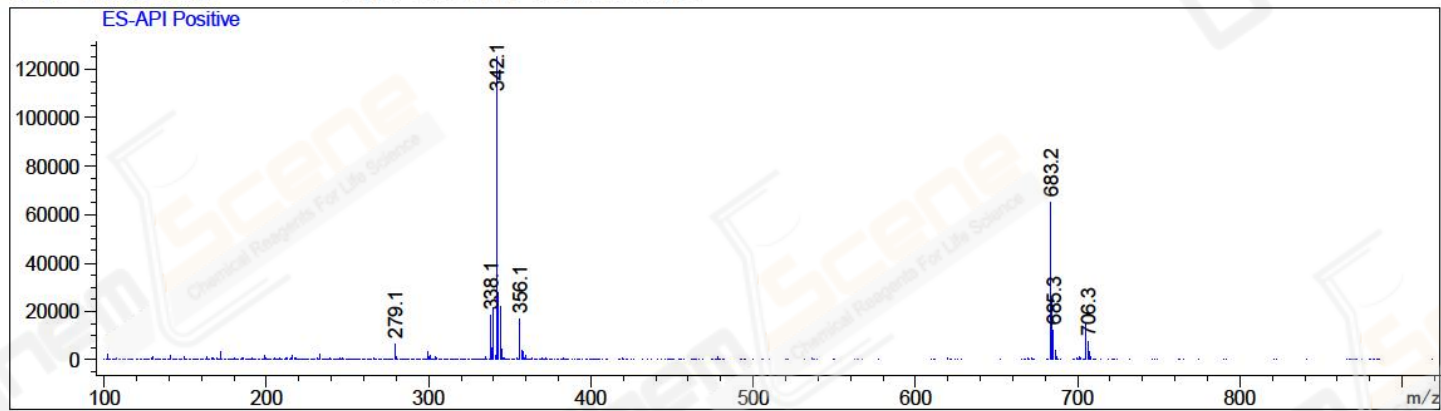
| RetTim | Width | Area | Height | Area% | MS (+) |
|--------|-------|--------|--------|--------|--------|
| 1.32 | 0.06 | 101.72 | 28.51 | 100.00 | 342 |

Integration Results for MSD1 TIC, MS File

| RetTim | Width | Area | Height | Area% | MS (+) |
|--------|-------|------------|------------|--------|--------|
| 1.27 | 0.06 | 3745246.00 | 1015593.81 | 100.00 | 342 |

Ret. Time: 1.27

<<<< POSITIVE SPECTRA >>>>



*** End of Report ***