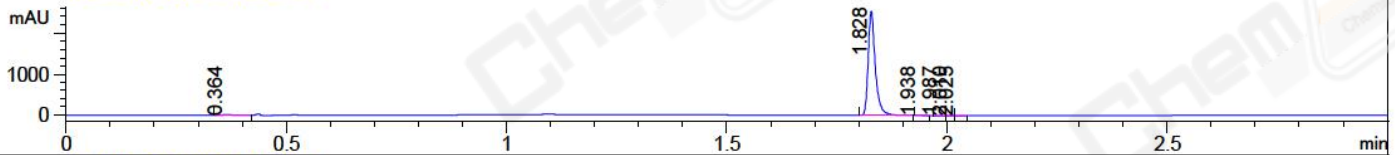
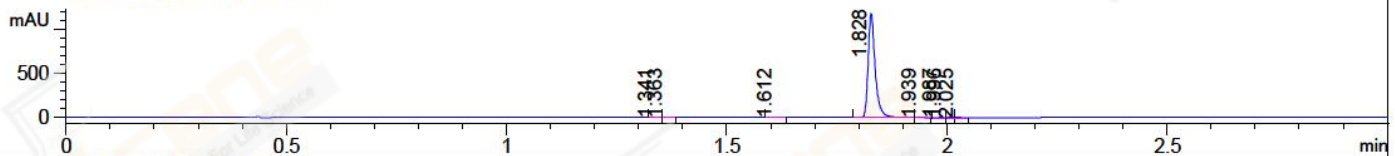


File ..\20180511\20180511-1.1 1\BIZ2018-511-WYQ5.D Tgt Mass (CHM):
Injection Date : 11 May 18 8:17 pm +0800 Seq. Line : 27
Sample Name : BIZ2018-511-WYQ5 Location : P2-D-01
Acq. Operator : SYSTEM Inj : 1
Spec. Reported : MS Integration Inj Volume : 2 ul
Acq. Method : D:\LCMS03\Data\2018\20180511\20180511-1.1 1\1-POS-3MIN.M
Analysis Method : D:\LCMS03\Data\2018\20180511\20180511-1.1 1\1-POS-3MIN.M
Catalog No : CS-0572 Batch#30091
Method Info : Mobile Phase: A: water(0.01%TFA) B:ACN(0.01%TFA)
Gradient: 5% to 95%B within 1.3 min
Flow Rate :1.8ml/min
Column :SunFire C18, 4.6*50mm,3.5um A-RP-186
Oven Temperature : 45C

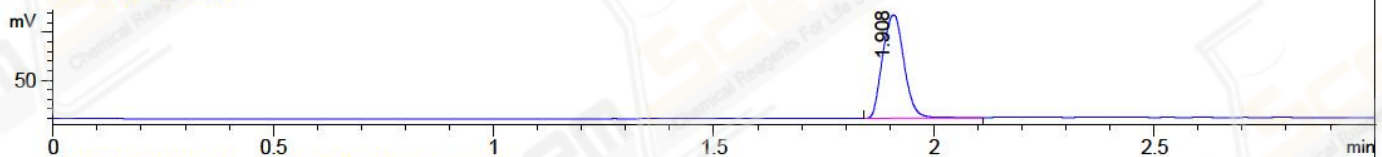
DAD1 A, Sig=214,4 Ref=off



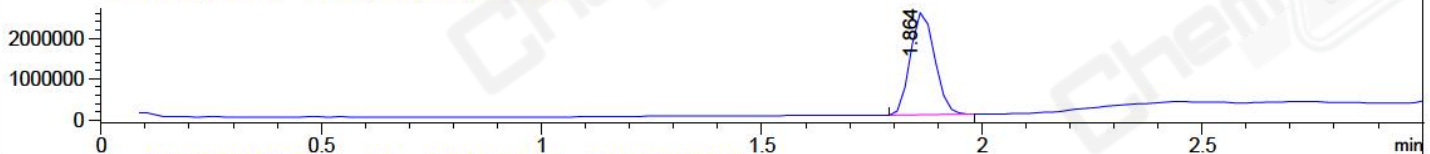
DAD1 B, Sig=254,4 Ref=off



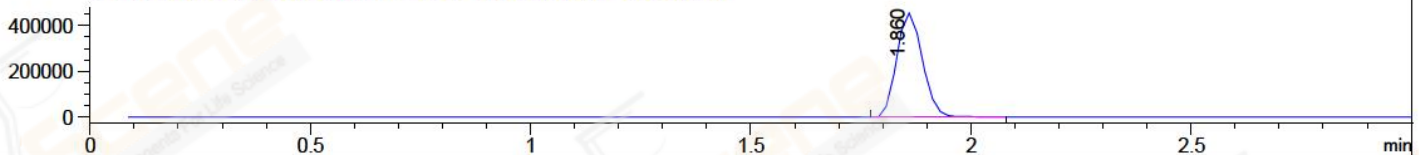
ELS1 A, ELSD Signal



MSD1 TIC, MS File ES-API, Pos, Scan, Frag: 70



Ion 449.1, MSD1 449.1, Target Mass 448.1 +H Positive, EIC=448.8:449.8



Integration Results for DAD1 A, Sig=214,4 Ref=off

RetTim	Width	Area	Height	Area%	MS (+)
0.36	0.03	8.55	3.80	0.30	279
1.83	0.02	2832.95	2522.71	99.50	449
1.94	0.01	1.79	1.91	0.06	233
1.99	0.01	0.86	1.08	0.03	233
2.01	0.01	1.71	2.12	0.06	233
2.02	0.01	1.34	1.62	0.05	233

Integration Results for DAD1 B, Sig=254,4 Ref=off

RetTim	Width	Area	Height	Area%	MS (+)
1.34	0.02	0.40	0.38	0.03	233
1.36	0.01	0.26	0.31	0.02	233
1.61	0.02	0.40	0.34	0.03	233
1.83	0.02	1305.87	1179.62	99.68	449
1.94	0.01	0.73	0.78	0.06	233
1.99	0.01	0.34	0.47	0.03	233
2.00	0.01	1.05	-0.00	0.08	233
2.02	0.02	0.97	1.03	0.07	233

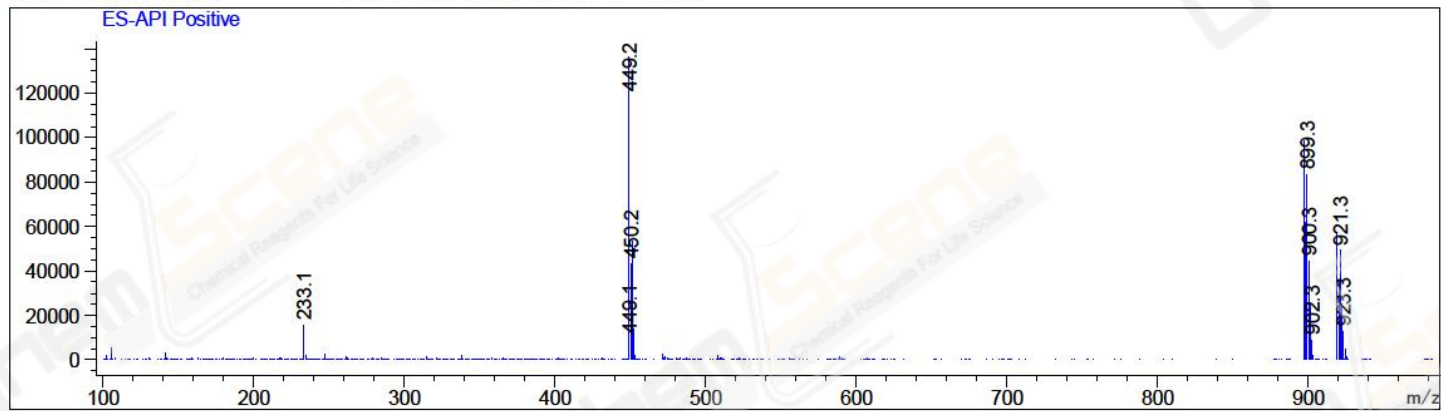
Integration Results for ELS1 A, ELSD Signal

RetTim	Width	Area	Height	Area%	MS (+)
1.91	0.05	365.47	108.29	100.00	449

Integration Results for MSD1 TIC, MS File

RetTim	Width	Area	Height	Area%	MS (+)
1.86	0.06	9590821.00	2506310.50	100.00	449

Ret. Time: 1.86 <<<< POSITIVE SPECTRA >>>>



*** End of Report ***