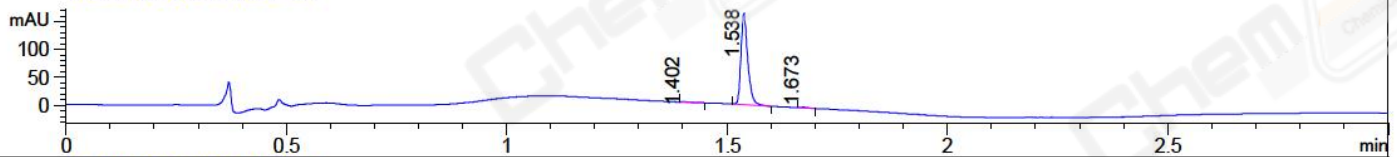
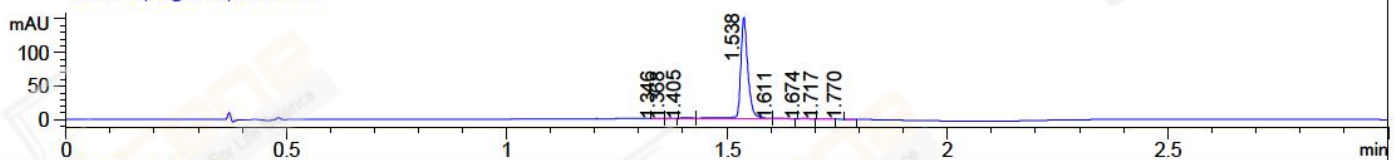


File ..ata\2018\20180517\20180517-1\YS5462-002-2.D Tgt Mass (CHM):
 Injection Date : 17 May 18 1:05 pm +0800 Seq. Line : 54
 Sample Name : YS5462-002-2 Location : P1-E-04
 Acq. Operator : SYSTEM Inj : 1
 Spec. Reported : MS Integration Inj Volume : 1 ul
 Acq. Method : D:\LCMS03\Data\2018\20180517\20180517-1\1-POS-3MIN.M
 Analysis Method : D:\LCMS03\Data\2018\20180517\20180517-1\1-POS-3MIN.M
 Catalog No : CS-0033115 Batch#30103
 Method Info : Mobile Phase: A: water(0.01%TFA) B:ACN(0.01%TFA)
 Gradient: 5% to 95%B within 1.3 min
 Flow Rate :1.8ml/min
 Column :SunFire C18, 4.6*50mm,3.5um A-RP-186
 Oven Temperature : 45C

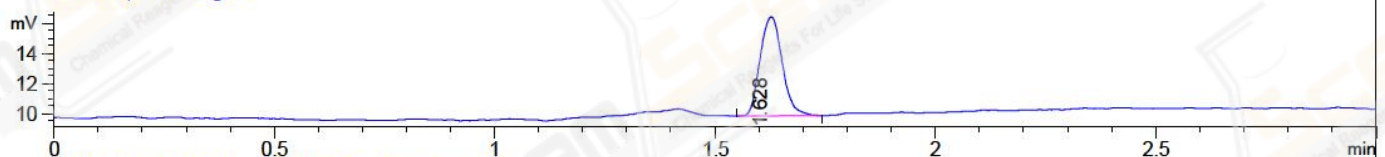
DAD1 A, Sig=214,4 Ref=off



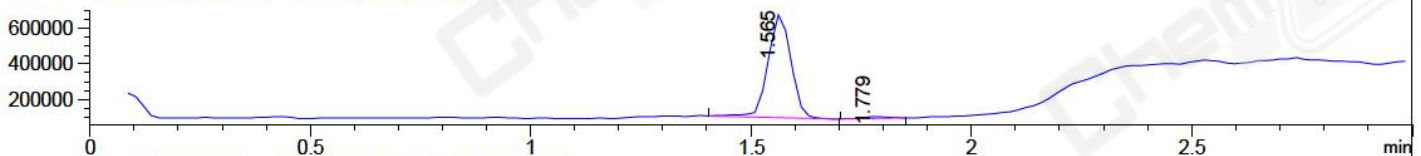
DAD1 B, Sig=254,4 Ref=off



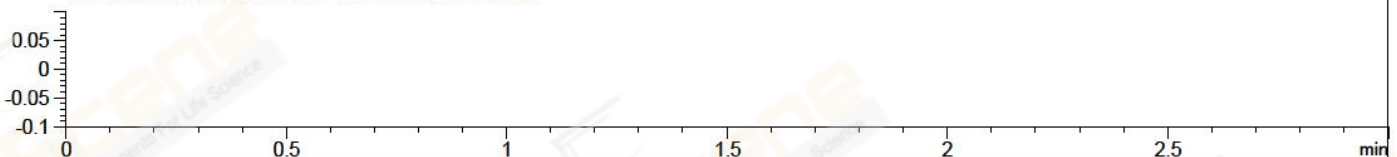
ELS1 A, ELSD Signal



MSD1 TIC, MS File ES-API, Pos, Scan, Frag: 70



Ion 1, MSD1 1, Target Mass 0 +H Positive, EIC=0.7:1.7



Integration Results for DAD1 A, Sig=214,4 Ref=off

RetTim	Width	Area	Height	Area%	MS (+)
1.40	0.02	1.07	0.80	0.60	253
1.54	0.02	174.83	162.24	98.74	253
1.67	0.02	1.17	1.17	0.66	233

Integration Results for DAD1 B, Sig=254,4 Ref=off

RetTim	Width	Area	Height	Area%	MS (+)
1.35	0.02	0.36	0.38	0.22	233
1.37	0.01	0.19	0.24	0.11	233
1.40	0.02	1.33	1.17	0.79	253
1.54	0.02	164.84	149.29	97.91	253
1.61	0.01	0.16	0.17	0.09	253
1.67	0.02	0.75	0.73	0.45	233
1.72	0.02	0.59	0.50	0.35	233
1.77	0.01	0.14	0.15	0.08	233

Integration Results for ELS1 A, ELSD Signal

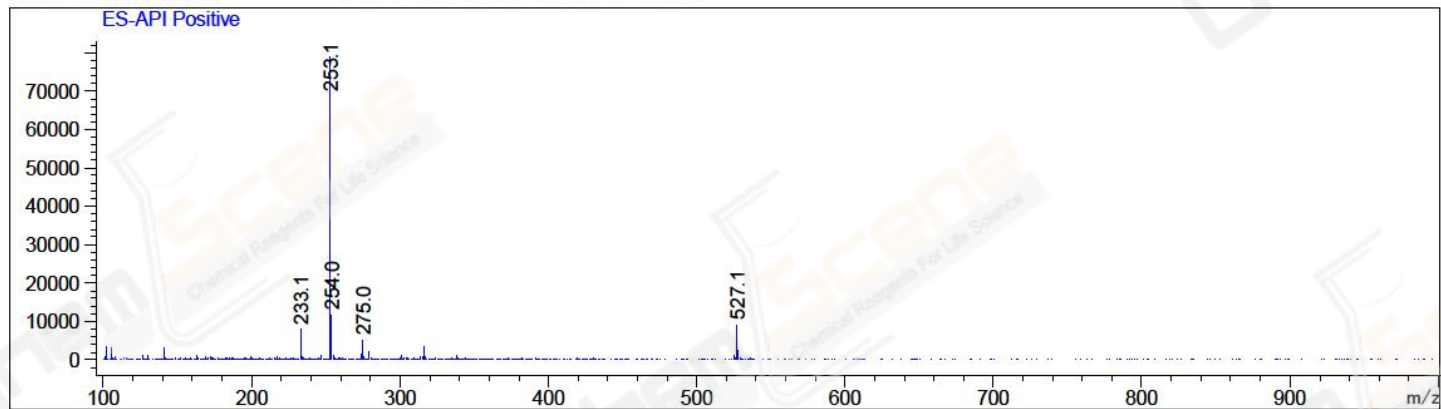
1.63 0.06 23.06 6.60 100.00 253

Integration Results for MSD1 TIC, MS File

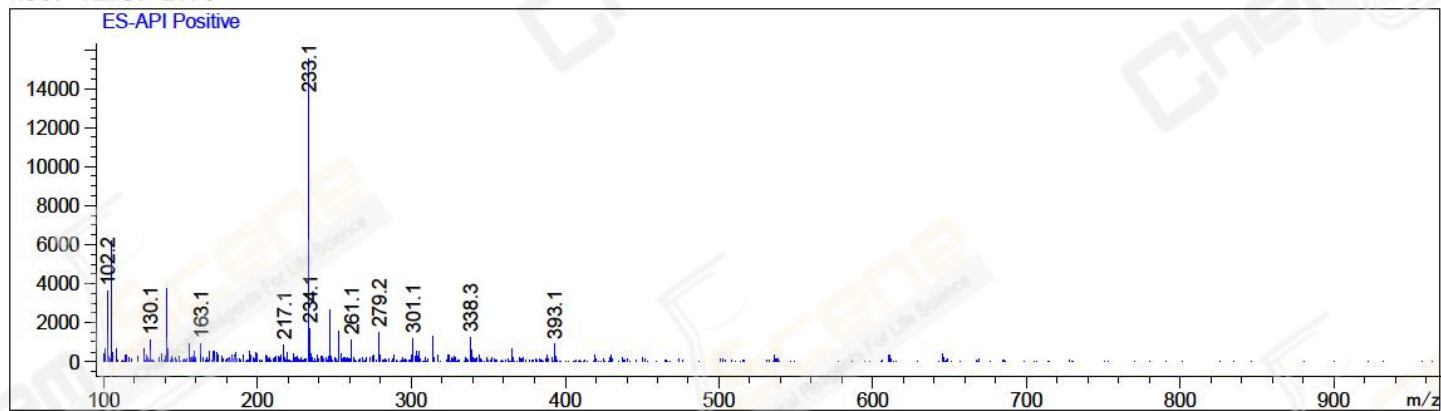
RetTim	Width	Area	Height	Area%	MS (+)
1.56	0.06	2096324.00	576147.75	98.07	253
1.78	0.06	41147.58	11529.45	1.93	233

RetTim Width Area Height Area% MS (+)

Ret. Time: 1.56 <<<< POSITIVE SPECTRA >>>>



Ret. Time: 1.78



*** End of Report ***