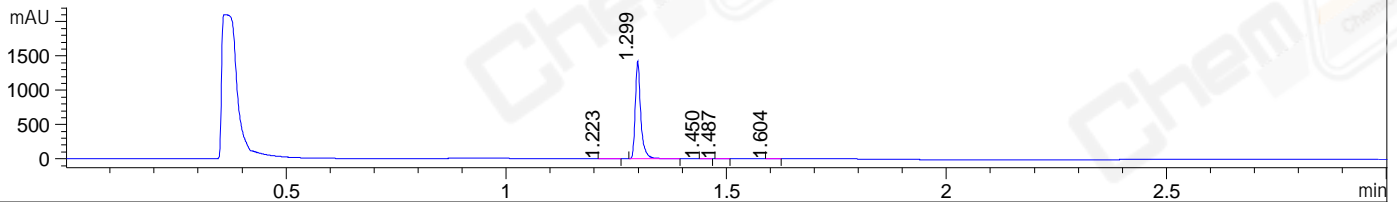


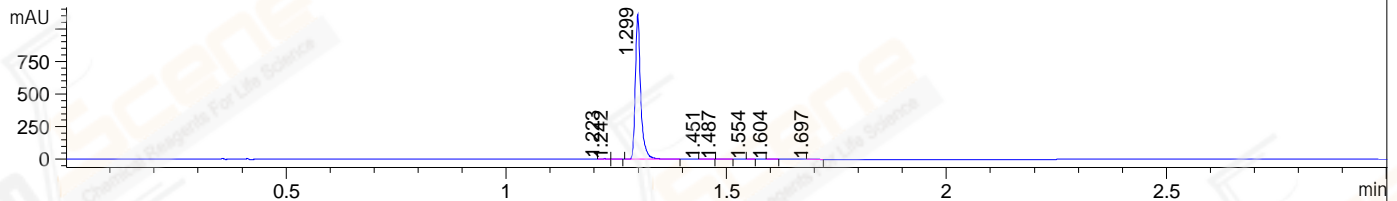
File ..EM32\1\DATA\20180524\211\BIZ2018-524-WYQ1.D Tgt Mass (CHM):

Injection Date : 24 May 18 6:21 pm +0800 Seq. Line : 45
 Sample Name : BIZ2018-524-WYQ1 Location : P2-E-02
 Acq. Operator : LQ_1052 Inj : 1
 Spec. Reported : MS Integration Inj Volume : 1 ul
 Acq. Method : D:\chem32\1\DATA\20180524\211\1-POS-3MIN-1.M
 Analysis Method : D:\CHEM32\1\DATA\20180524\211\1-POS-3MIN-1.M
 CAS NO. : 231277-92-2 A-RP-314
 Method Info : Mobile Phase: A: water(0.01%TFA) B:ACN(0.01%TFA)
 Gradient: 5% to 95%B within 1.3 min
 Flow Rate :1.8ml/min
 Column :SunFire C18, 4.6*50mm,3.5um A-RP-314
 Oven Temperature : 45□

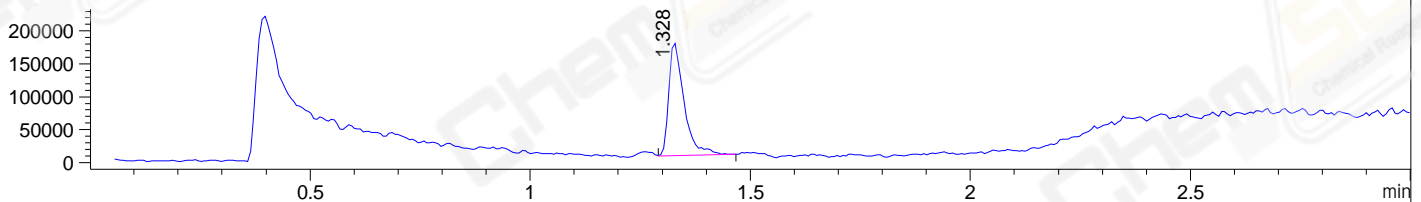
DAD1 B, Sig=214,4 Ref=off



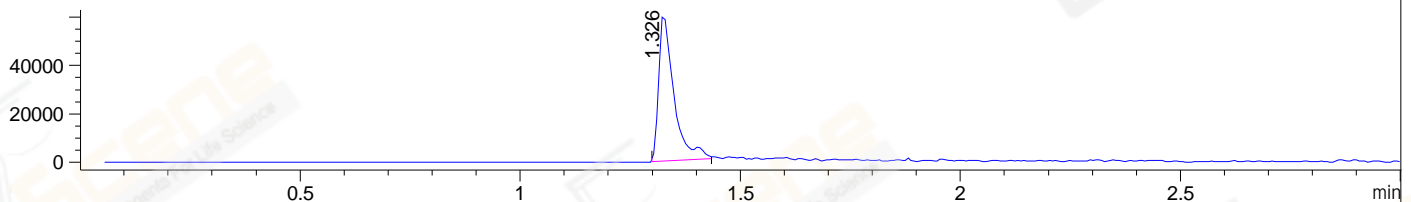
DAD1 C, Sig=254,4 Ref=off



MSD1 TIC, MS File ES-API, Pos, Scan, Frag: 70



Ion 581.1, MSD1 581.1, Target Mass 580.1 +H Positive, EIC=580.8:581.8



Integration Results for DAD1 B, Sig=214,4 Ref=off

RetTim	Width	Area	Height	Area%	MS (+)
1.22	0.02	4.54	3.94	0.37	157
1.30	0.01	1227.20	1427.75	99.09	581
1.45	0.01	1.00	1.21	0.08	581
1.49	0.01	1.87	2.35	0.15	581
1.60	0.01	3.80	4.02	0.31	141

Integration Results for DAD1 C, Sig=254,4 Ref=off

RetTim	Width	Area	Height	Area%	MS (+)
1.22	0.01	3.58	4.07	0.38	157
1.24	0.01	1.18	1.45	0.12	583
1.30	0.01	942.42	1112.88	99.10	581
1.45	0.02	0.69	0.66	0.07	581
1.49	0.02	1.35	1.45	0.14	581
1.55	0.01	0.27	0.42	0.03	581
1.60	0.01	1.11	1.48	0.12	581
1.70	0.02	0.39	0.41	0.04	141

Integration Results for MSD1 TIC, MS File

RetTime	Width	Area	Height	Area%	MS(+)
1.33	0.04	413732.34	172091.28	100.00	581

Ret. Time: 1.33 <<<< POSITIVE SPECTRA >>>>

