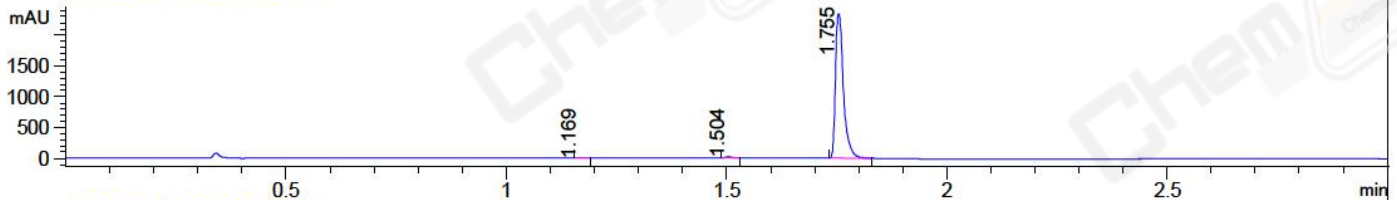
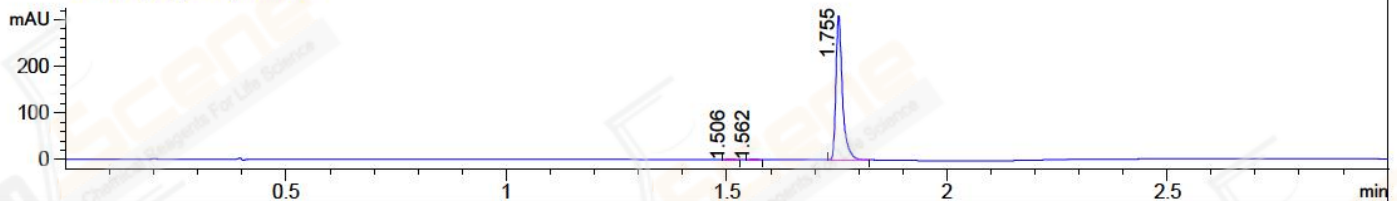


File ..EM32\1\DATA\20180525\211\BIZ2018-525-CXL2.D Tgt Mass (CHM):
Injection Date : 25 May 18 6:40 pm +0800 Seq. Line : 36
Catalog No : CS-1389 Batch#30432 Location : P1-D-06
Acq. Operator : LQ_1052 Inj : 1
Spec. Reported : MS Integration Inj Volume : 1 ul
Acq. Method : D:\chem32\1\DATA\20180525\211\1-POS-3MIN-1.M
Analysis Method : D:\CHEM32\1\DATA\20180525\211\1-POS-3MIN-1.M
Catalog No : CS-1389 Batch#30432 A-RP-314
Method Info : Mobile Phase: A: water(0.01%TFA) B:ACN(0.01%TFA)
Gradient: 5% to 95%B within 1.3 min
Flow Rate :1.8ml/min
Column :SunFire C18, 4.6*50mm,3.5um A-RP-314
Oven Temperature : 45□

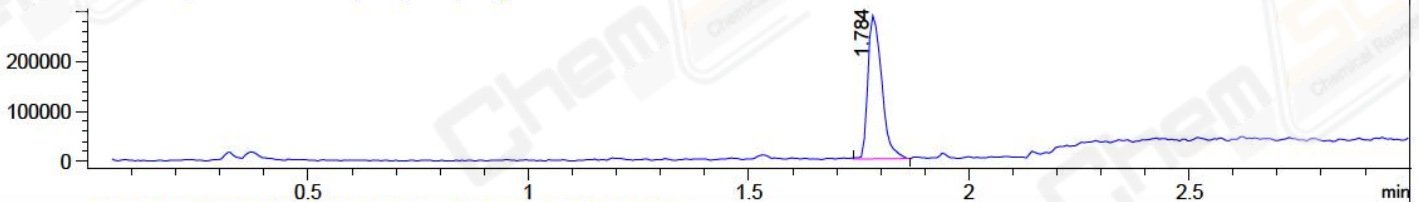
DAD1 B, Sig=214,4 Ref=off



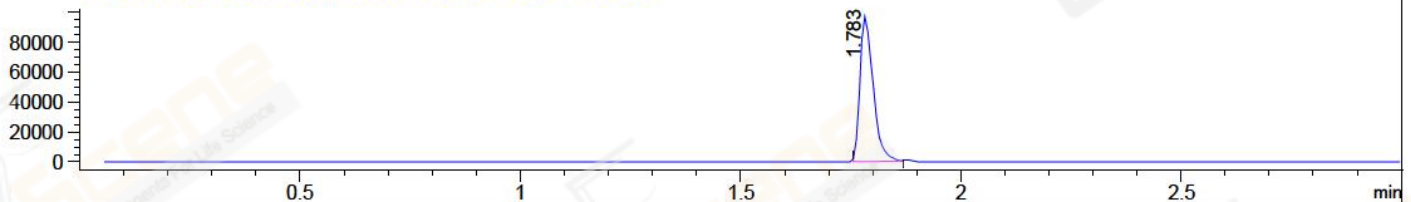
DAD1 C, Sig=254,4 Ref=off



MSD1 TIC, MS File ES-API, Pos, Scan, Frag: 70



Ion 404, MSD1 404, Target Mass 403 +H Positive, EIC=403.7:404.7



Integration Results for DAD1 B, Sig=214,4 Ref=off

RetTim	Width	Area	Height	Area%	MS (+)
1.17	0.01	7.51	8.26	0.25	ND
1.50	0.01	21.30	21.30	0.71	244
1.75	0.02	2951.68	2345.03	99.03	406

Integration Results for DAD1 C, Sig=254,4 Ref=off

RetTim	Width	Area	Height	Area%	MS (+)
1.51	0.02	1.00	0.82	0.31	244
1.56	0.02	0.80	0.74	0.25	244
1.75	0.02	321.35	310.94	99.44	406

Integration Results for MSD1 TIC, MS File

RetTim	Width	Area	Height	Area%	MS (+)
1.78	0.04	629704.88	287874.66	100.00	406

Ret. Time: 1.78

<<<< POSITIVE SPECTRA >>>>

