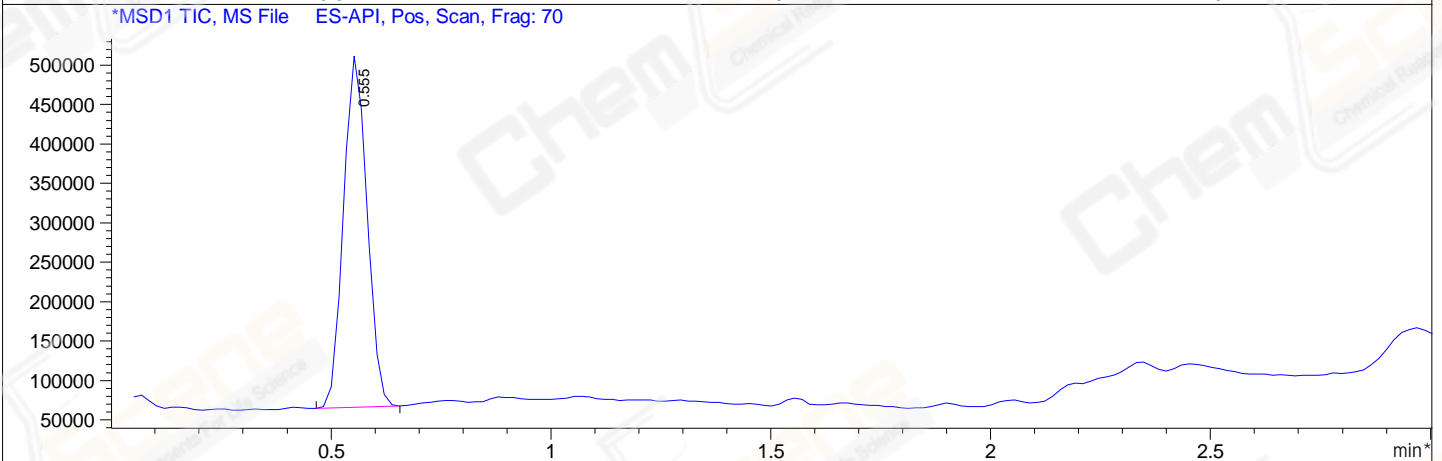
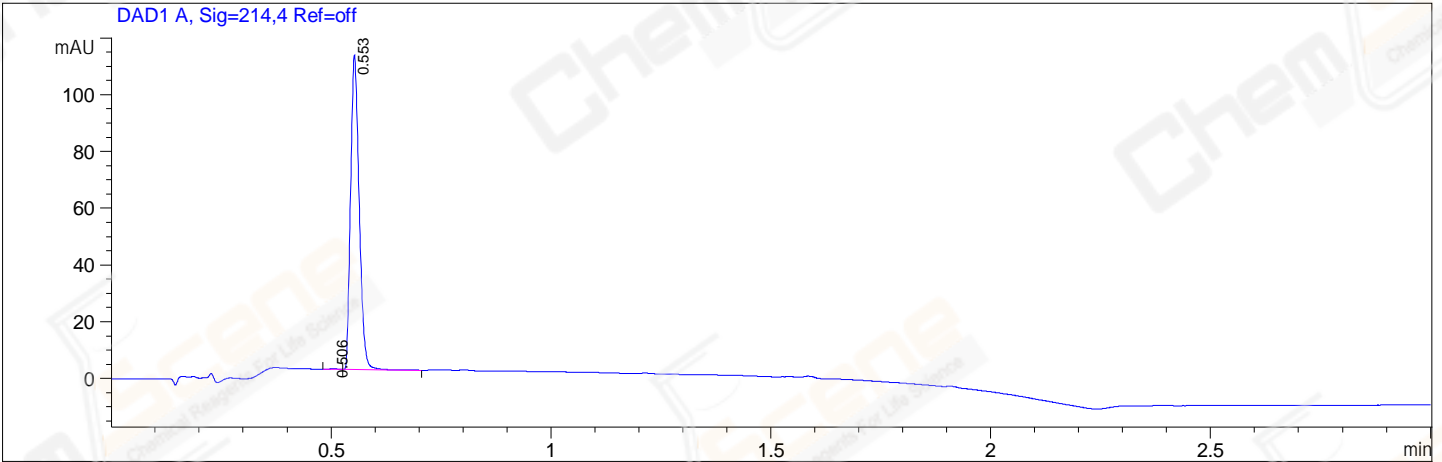


File E:\ChemStation\1\DATA\2023\2023-10\2023-10-18\BIZ2023-018-SCH12-UPLC-MS-10-017155.D
 Injection Date : 18-Oct-23, 15:47:41 Tgt Mass(EZX) :
 Sample Name : BIZ2023-018-SCH12 Location : P2-B-02
 Acq. Operator : LY_2278 Inj : 1
 Spec. Reported : MS Integration Inj Volume : 0.8 ul
 Acq. Method : E:\ChemStation\1\Methods\1-POS-UPLC3.0MIN(1.2)(150-1000).M
 Analysis Method : E:\CHEMSTATION\1\METHODS\1-POS-UPLC3.0MIN(1.2)(150-1000).M
 CAS NO. : 2737202-70-7 WalkUp method: '1-POS-3MIN' Project: BIZ2023
 Method Info : Mobile Phase: A: water(0.01%TFA) B:ACN(0.01%TFA)
 Gradient: 5% to 95%B within 2.0 min
 Flow Rate :1.2ml/min
 Column :Shim-pack Scepter C18-120, 3.0*33mm,3um
 Oven Temperature : 45C



Integration Results for DAD1 A, Sig=214,4 Ref=off

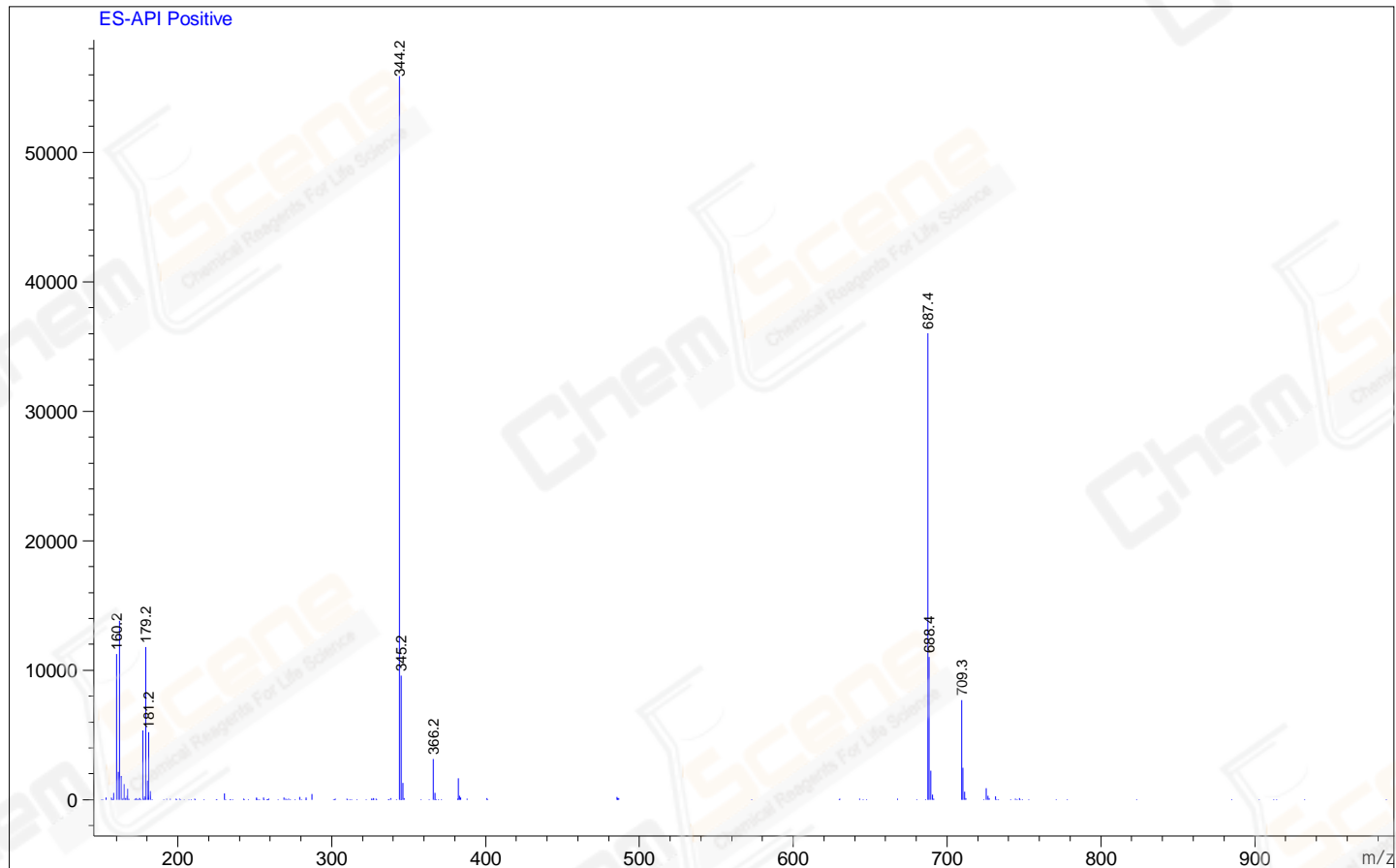
RetTim	Width	Area	Height	Area%
0.51	0.02	0.32	0.28	0.21
0.55	0.02	150.71	110.70	99.79

Integration Results for MSD1 TIC, MS File

RetTim	Width	Area	Height	Area%
0.55	0.06	1663945.25	447243.78	100.00

Ret. Time: 0.55

<<<< POSITIVE SPECTRA >>>>



*** End of Report ***