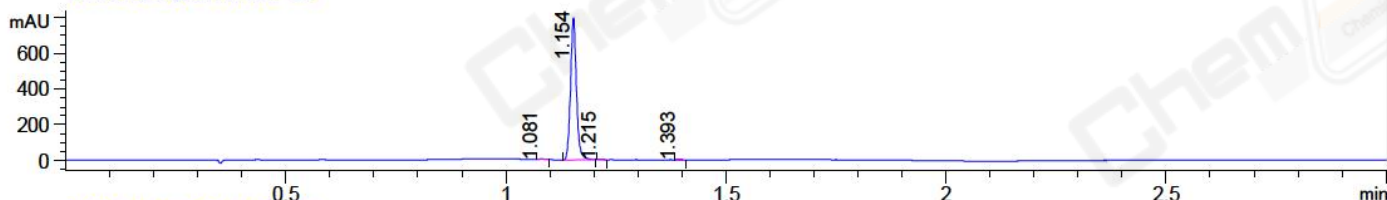
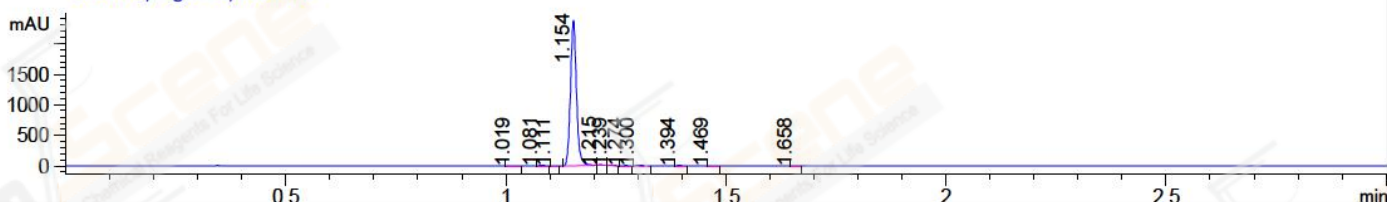


File ..EM32\1\DATA\20180529\233\BIZ2018-530-CXL2.D Tgt Mass (CHM):
Injection Date : 30 May 18 6:35 pm +0800 Seq. Line : 15
Sample Name : BIZ2018-530-CXL2 Location : P2-C-09
Acq. Operator : LQ_1052 Inj : 1
Spec. Reported : MS Integration Inj Volume : 1 ul
Acq. Method : D:\chem32\1\DATA\20180529\233\1-POS-3MIN-1.M
Analysis Method : D:\CHEM32\1\DATA\20180529\233\1-POS-3MIN-1.M
Catalog No : CS-5863 Batch#30681 A-RP-314
Method Info : Mobile Phase: A: water(0.01%TFA) B:ACN(0.01%TFA)
Gradient: 5% to 95%B within 1.3 min
Flow Rate :1.8ml/min
Column :SunFire C18, 4.6*50mm,3.5um A-RP-314
Oven Temperature : 45□

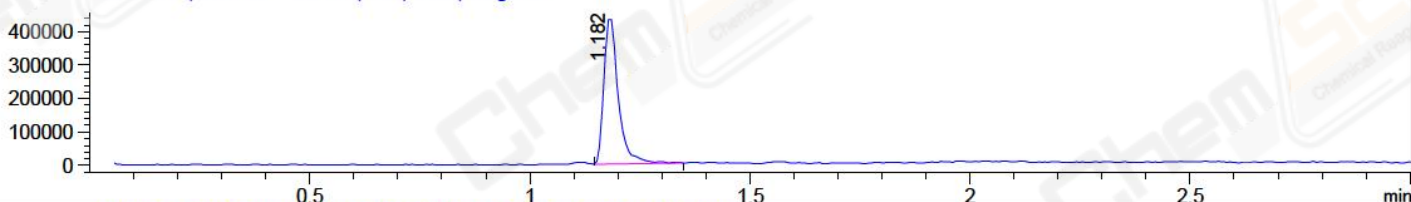
DAD1 B, Sig=214,4 Ref=off



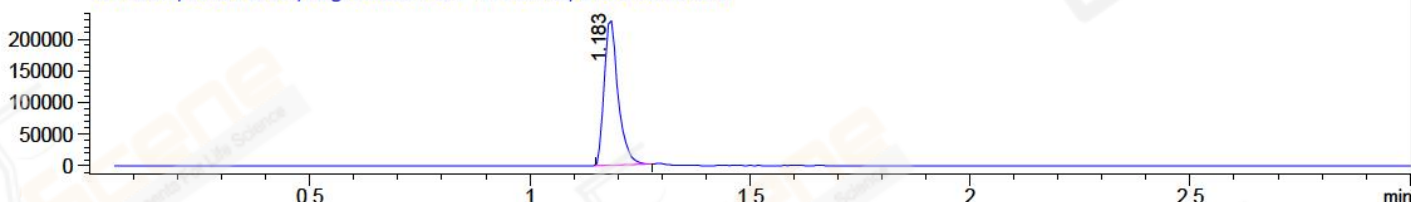
DAD1 C, Sig=254,4 Ref=off



MSD1 TIC, MS File ES-API, Pos, Scan, Frag: 70



Ion 380.1, MSD1 380.1, Target Mass 379.1 +H Positive, EIC=379.8:380.8



Integration Results for DAD1 B, Sig=214,4 Ref=off

RetTim	Width	Area	Height	Area%	MS (+)
1.08	0.01	2.58	4.02	0.35	ND
1.15	0.02	738.77	797.88	99.24	380
1.21	0.01	1.75	2.73	0.24	380
1.39	0.01	1.36	2.06	0.18	ND

Integration Results for DAD1 C, Sig=254,4 Ref=off

RetTim	Width	Area	Height	Area%	MS (+)
1.02	0.02	0.61	0.52	0.03	ND
1.08	0.01	4.12	5.71	0.18	ND
1.11	0.01	0.48	0.57	0.02	432
1.15	0.02	2251.20	2377.93	98.89	380
1.21	0.01	9.23	12.78	0.41	380
1.24	0.01	1.71	2.63	0.07	380
1.27	0.02	1.19	1.21	0.05	380
1.30	0.02	3.95	3.43	0.17	380
1.39	0.01	2.79	3.85	0.12	ND
1.47	0.01	0.63	0.76	0.03	ND

1.66 0.01 0.56 0.81 0.02 141

Integration Results for MSD1 TIC, MS File

RetTime	Width	Area	Height	Area%	MS (+)
1.18	0.03	991194.13	442471.00	100.00	380

Ret. Time: 1.18

<<<< POSITIVE SPECTRA >>>>

