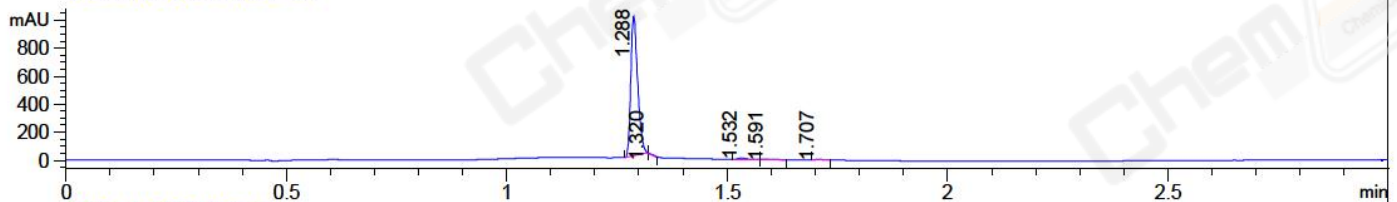
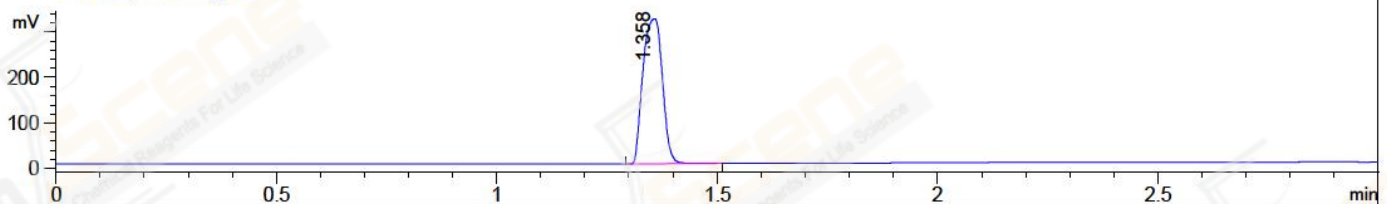


File ..\2018\20180605\20180605\BIZ2018-605-WYQ12.D Tgt Mass (CHM):
Injection Date : 5 Jun 18 8:19 pm +0800 Seq. Line : 126
Sample Name : BIZ2018-605-WYQ12 Location : P2-C-09
Acq. Operator : SYSTEM Inj : 1
Spec. Reported : MS Integration Inj Volume : 1 ul
Acq. Method : D:\LCMS03\Data\2018\20180605\20180605\1-POS-3MIN.M
Analysis Method : D:\LCMS03\Data\2018\20180605\20180605\1-POS-3MIN.M
Catalog No : CS-5919 Batch#30808
Method Info : Mobile Phase: A: water(0.01%TFA) B:ACN(0.01%TFA)
Gradient: 5% to 95%B within 1.3 min
Flow Rate :1.8ml/min
Column :SunFire C18, 4.6*50mm,3.5um A-RP-186
Oven Temperature : 45C

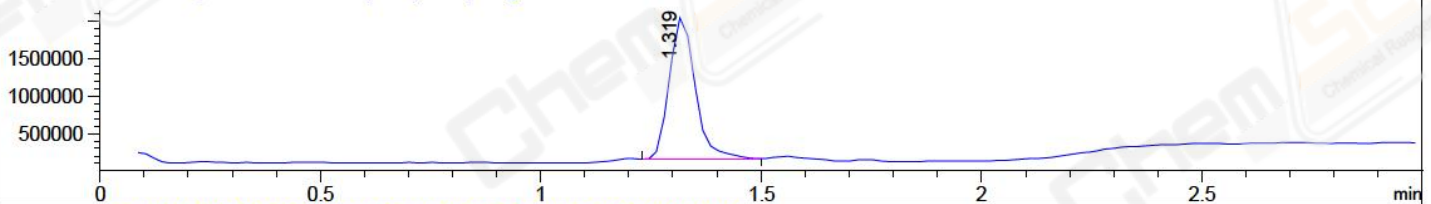
DAD1 A, Sig=214,4 Ref=off



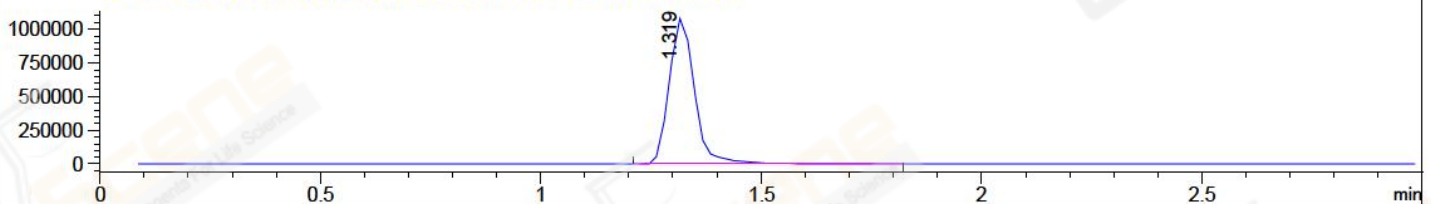
ELS1 A, ELSD Signal



MSD1 TIC, MS File ES-API, Pos, Scan, Frag: 70



Ion 409.2, MSD1 409.2, Target Mass 408.2 +H Positive, EIC=408.9:409.9



Integration Results for DAD1 A, Sig=214,4 Ref=off

RetTim	Width	Area	Height	Area%	MS (+)
1.29	0.02	1076.23	1000.19	98.03	409
1.32	0.01	2.35	1.40	0.21	409
1.53	0.02	10.71	9.96	0.98	338
1.59	0.02	3.68	3.24	0.33	338
1.71	0.02	4.93	4.62	0.45	233

Integration Results for ELS1 A, ELSD Signal

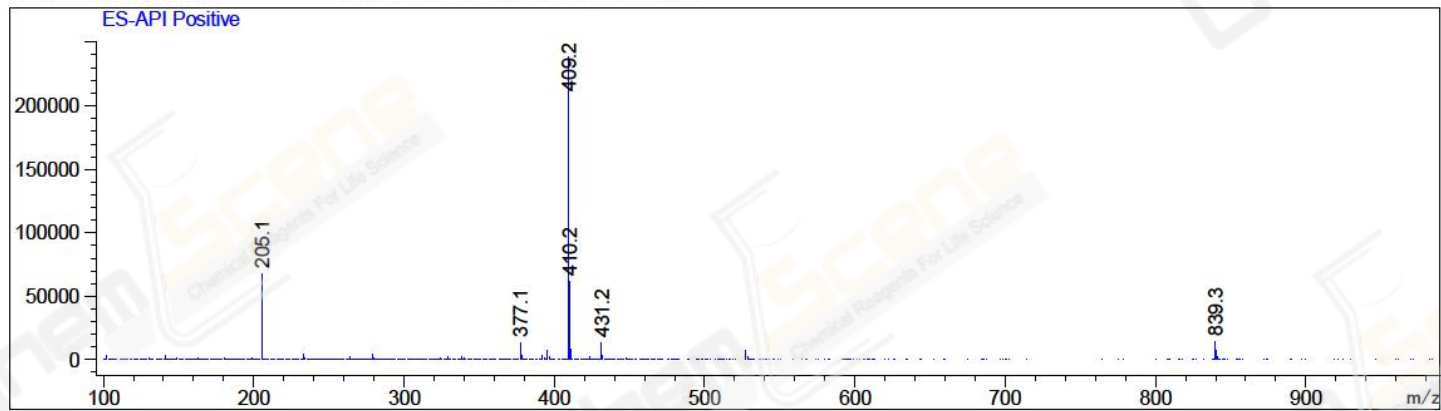
RetTim	Width	Area	Height	Area%	MS (+)
1.36	0.05	980.90	319.17	100.00	409

Integration Results for MSD1 TIC, MS File

RetTim	Width	Area	Height	Area%	MS (+)
1.32	0.06	7657206.00	1902349.00	100.00	409

Ret. Time: 1.32

<<<< POSITIVE SPECTRA >>>>



*** End of Report ***