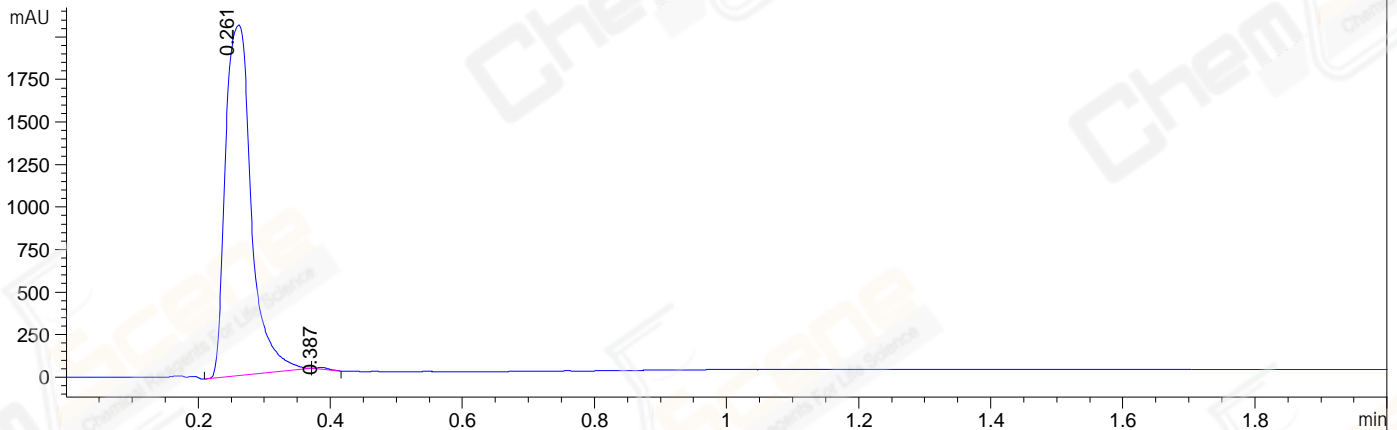
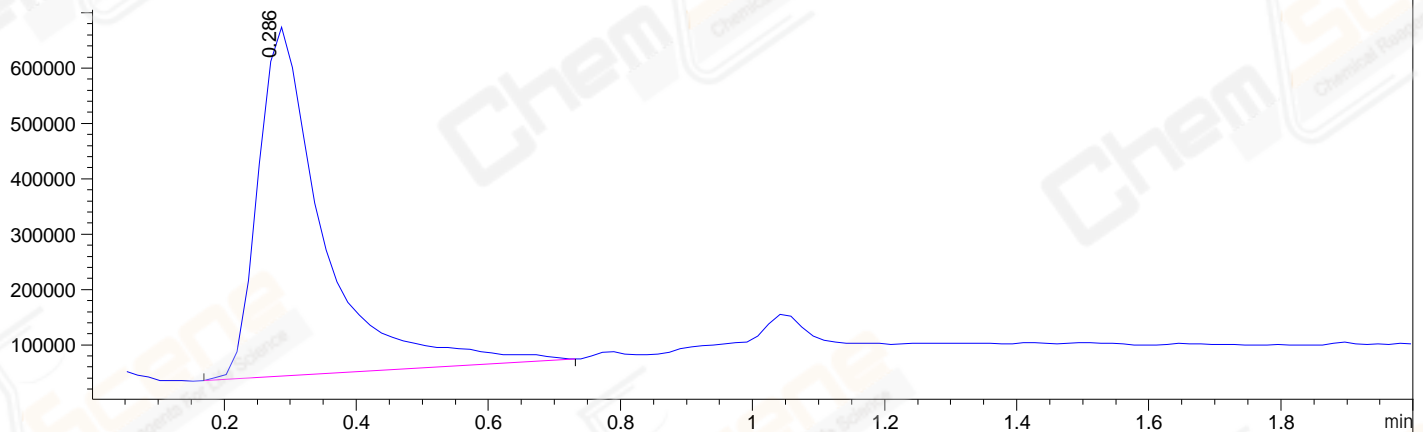


File ..10-31\BIZ2023-030-WLQ15-UPLC-MS-06-042207.D Tgt Mass (EZX):
 Injection Date : 31-Oct-23, 11:20:19 Seq. Line : 0
 Sample Name : BIZ2023-030-WLQ15 Location :
 Acq. Operator : LY_2287 Inj : 1
 Spec. Reported : MS Integration Inj Volume : 5 ul
 Acq. Method : D:\software\method\Methods\1-NEG-UPLC2.0MIN(0.8ML).M
 Analysis Method : D:\SOFTWARE\METHOD\METHODS\1-NEG-UPLC2.0MIN(0.8ML).M
 CAS NO. : 504-88-1 WalkUp method: '1-NEG-2MIN' Project: BIZ2023
 Method Info : Mobile Phase: A: water(0.01%FA) B:ACN(0.01%FA)
 Gradient: 5% to 95%B within 0.6 min
 Flow Rate : 0.8ml/min
 Column : Poroshell 120 EC- C18, 2.1*50mm,1.9um A-RP-530
 Oven Temperature : 45C

DAD1 A, Sig=214,4 Ref=off



MSD1 TIC, MS File ES-API, Neg, Scan, Frag: 70



Integration Results for DAD1 A, Sig=214,4 Ref=off

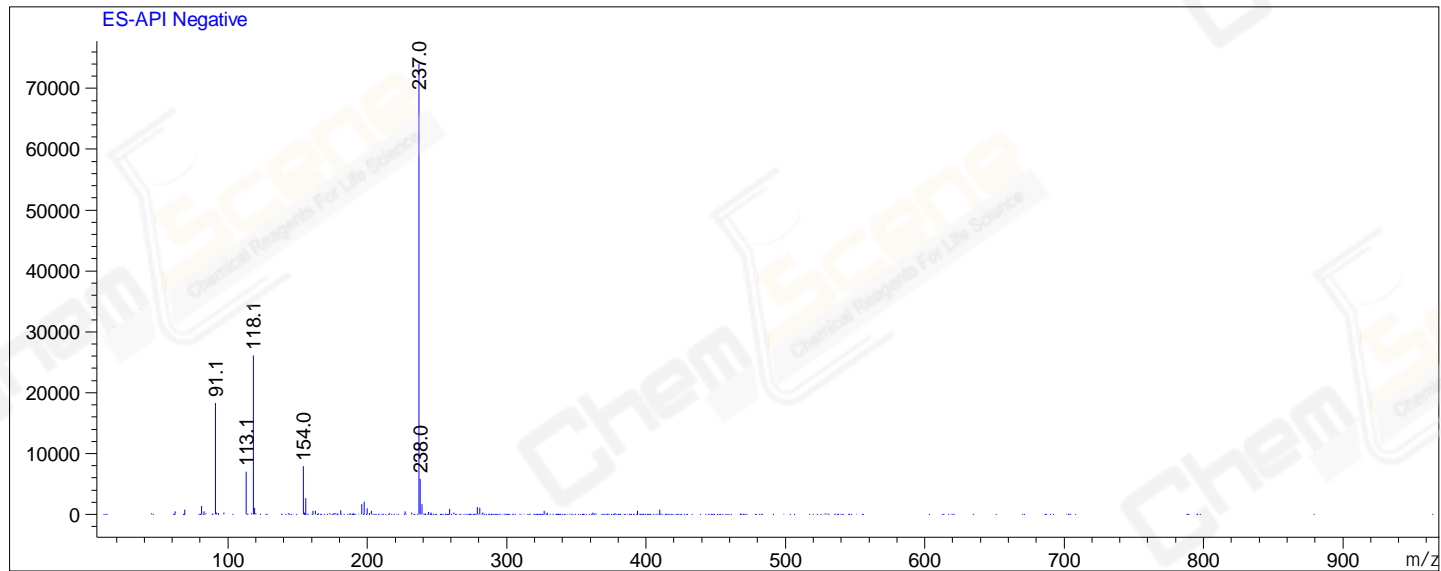
RetTim	Width	Area	Height	Area%	MS(-)
0.26	0.04	5622.09	2061.42	99.78	237
0.39	0.02	12.56	11.29	0.22	91

Integration Results for MSD1 TIC, MS File

RetTim	Width	Area	Height	Area%	MS(-)
0.29	0.10	4341165.00	630677.50	100.00	237

Ret. Time: 0.29

<<<< NEGATIVE SPECTRA >>>>



*** End of Report ***