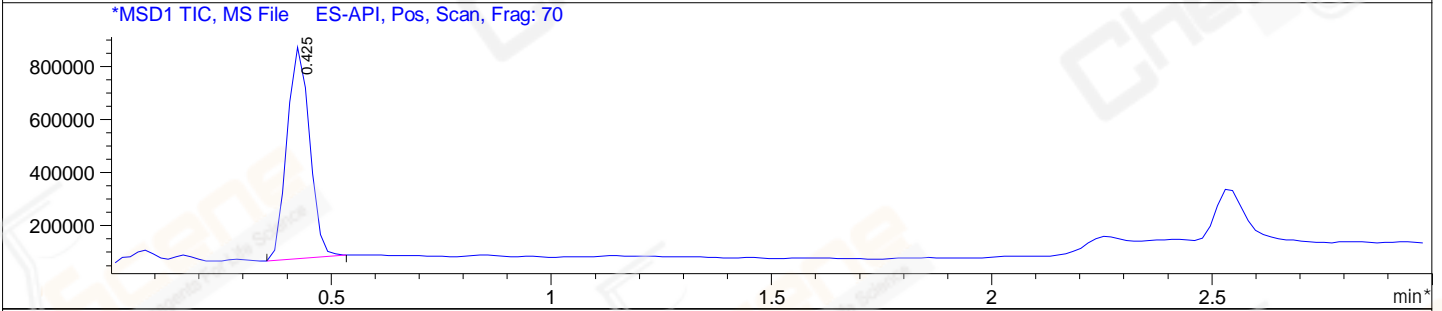
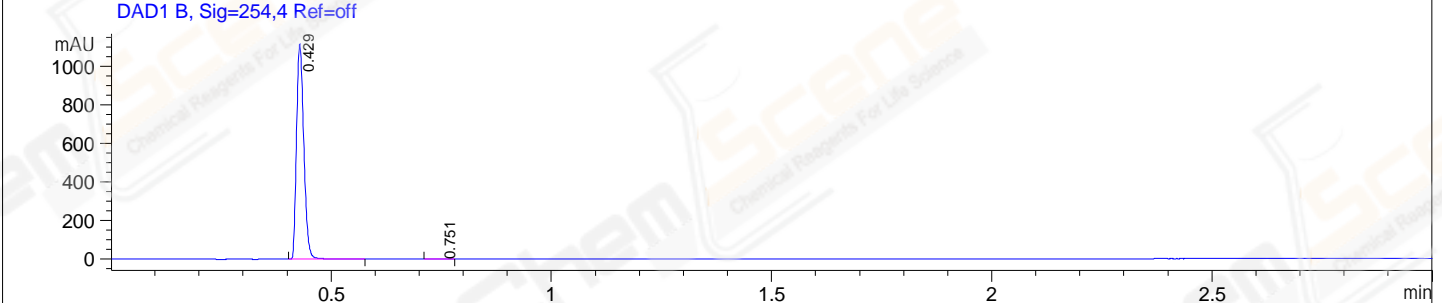
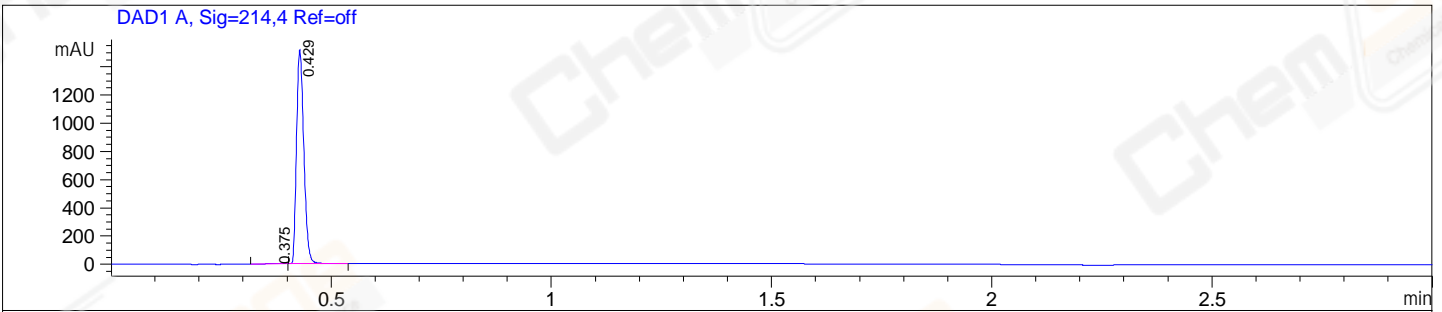


File E:\ChemStation\1\DATA\2023\2023-10\2023-10-31\BIZ2023-030-SCH49-UPLC-MS-10-018274.D  
 Injection Date : 31-Oct-23, 12:03:40 Tgt Mass(EZX) :  
 Sample Name : BIZ2023-030-SCH49 Location : P1-D-03  
 Acq. Operator : LY\_2278 Inj : 1  
 Spec. Reported : MS Integration Inj Volume : 0.8 ul  
 Acq. Method : E:\ChemStation\1\Methods\1-POS-UPLC3.0MIN(1.2)(150-1000).M  
 Analysis Method : E:\CHEMSTATION\1\METHODS\1-POS-UPLC3.0MIN(1.2)(150-1000).M  
 CAS NO. : 938-55-6 WalkUp method: '1-POS-3MIN' Project: BIZ2023  
 Method Info : Mobile Phase: A: water(0.01%TFA) B:ACN(0.01%TFA)  
 Gradient: 5% to 95%B within 2.0 min  
 Flow Rate :1.2ml/min  
 Column :Shim-pack Scepter C18-120, 3.0\*33mm,3um  
 Oven Temperature : 45C



Integration Results for DAD1 A, Sig=214,4 Ref=off

RetTim	Width	Area	Height	Area%
0.37	0.04	5.43	1.68	0.31
0.43	0.02	1744.23	1511.77	99.69

Integration Results for DAD1 B, Sig=254,4 Ref=off

RetTim	Width	Area	Height	Area%
0.43	0.02	1276.45	1111.35	99.91
0.75	0.03	1.13	0.44	0.09

Integration Results for MSD1 TIC, MS File

RetTim	Width	Area	Height	Area%
0.43	0.06	2846526.75	796235.50	100.00

Ret. Time: 0.43

<<<< POSITIVE SPECTRA >>>>



\*\*\* End of Report \*\*\*